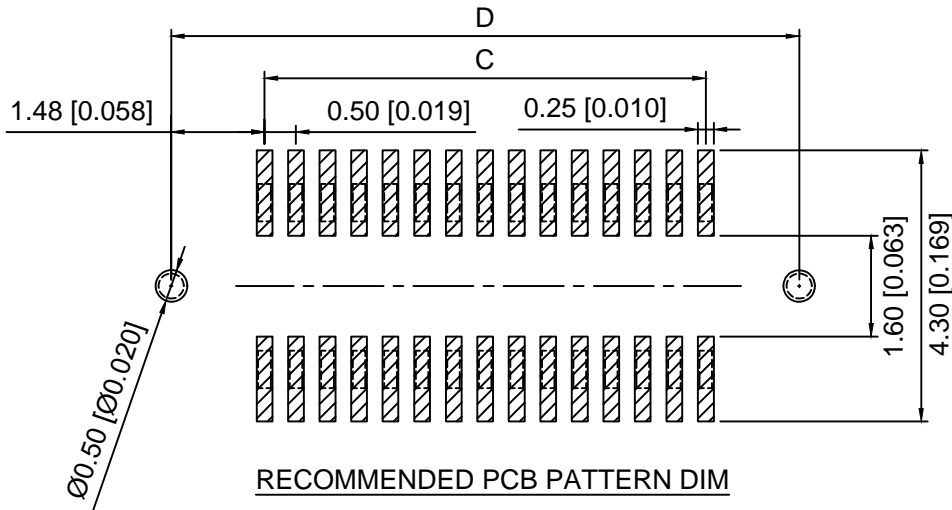
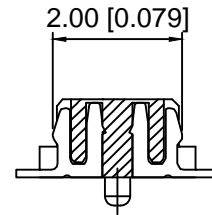
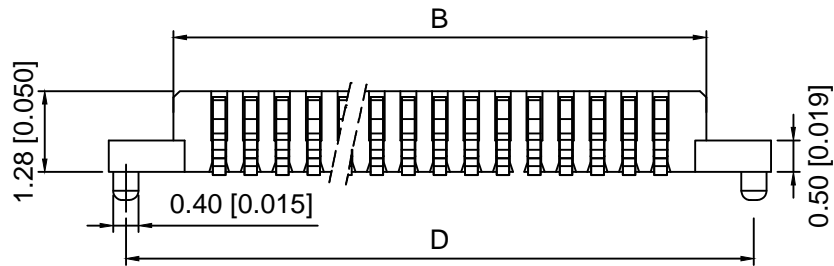


3D VIEW



RECOMMENDED PCB PATTERN DIM

Specifications:

规格:

Voltage rating:50V AC/DC

额定电压: 50V AC/DC

Current rating:0.5A AC/DC

额定电流: 0.5A AC/DC

Withstanding voltage:200V AC/minute

耐受电压: 200V AC/分钟

Temperature range:-25°C-+85°C

温度范围: -25°C-+85°C

Insulation resistance: 500MΩ min

绝缘电阻: 500MΩ Min

Contact resistance:40mΩ Max

接触电阻: 40mΩ Max

X0511 W V S-XX X X-LP V01
① ② ③ ④ ⑤ ⑥ ⑦ ⑧ ⑨

- 1.Series No
- 2.Category:W-Wafer
- 3.Welding Board Angle:V-Straight 180°
- 4.Welading Way:S-SMT
- 5.Row No.Pin No:XX-10-80P
6. Height:A=1.28mm
- 7.Special No:Blank-Without positioning Column
S-With positioning Column
- 8.Material:LP-LCP UL 94V-0
- 9.Plating:V01-Gold Flash

Poles	A	B	C	D	Poles	A	B	C	D
10	5.50	3.40	2.00	4.96	46	14.50	12.40	11.00	13.96
12	6.00	3.90	2.50	5.46	48	15.00	12.90	11.50	14.46
14	6.50	4.40	3.00	5.96	50	15.50	13.40	12.00	14.96
16	7.00	4.90	3.50	6.46	52	16.00	13.90	12.50	15.46
18	7.50	5.40	4.00	6.96	54	16.50	14.40	13.00	15.96
20	8.00	5.90	4.50	7.46	56	17.00	14.90	13.50	16.46
22	8.50	6.40	5.00	7.96	58	17.50	15.40	14.00	16.96
24	9.00	6.90	5.50	8.46	60	18.00	15.90	14.50	17.46
26	9.50	7.40	6.00	8.96	62	18.50	16.40	15.00	17.96
28	10.00	7.90	6.50	9.46	64	19.00	16.90	15.50	18.46
30	10.50	8.40	7.00	9.96	66	19.50	17.40	16.00	18.96
32	11.00	8.90	7.50	10.46	68	20.00	17.90	16.50	19.46
34	11.50	9.40	8.00	10.96	70	20.50	18.40	17.00	19.96
36	12.00	9.90	8.50	11.46	72	21.00	18.90	17.50	20.46
38	12.50	10.40	9.00	11.96	74	21.50	19.40	18.00	20.96
40	13.00	10.90	9.50	12.46	76	22.00	19.90	18.50	21.46
42	13.50	11.40	10.00	12.96	78	22.50	20.40	19.00	21.96
44	14.00	11.90	10.50	13.46	80	23.00	20.90	19.50	22.46

X0511WVS-XXXX-LPV01	LCP	Phosphor Bronze	X0511F
PART NO	Material	Material(Pin)	Suitable XKB Female

DSND	SCALE: N/A	MODEL TYPE:
DWN	VIEW:	0.5mm BTB Style Connector
CHKD	UNIT: mm/in	PART NO.:
APPD	SIZE: A4	X0511WVS-XXXX-LPV01
		DWG NO.:
		X-X0511WVS-XXXX-LPV01
		WEIGHT
		SHEET
		REVISION
		1/1
		A0



XKB INDUSTRIAL PRECISION CO.,LIMITED

					ANGLAR	±5°
ΔX					L ≤ 4	±0.2
ΔX					4 < L ≤ 16	±0.3
ΔX					16 < L ≤ 63	±0.4
MARK	DESCRIPTION	DATE	REVISED	APPROVED	L > 63	±0.5
REVISIONS					UNSPECIFIED TOLERANCES	
www.helloxkb.com www.helloxkb.cn www.xk-dg.cn						

X-ON Electronics

Largest Supplier of Electrical and Electronic Components

Click to view similar products for [Board to Board & Mezzanine Connectors](#) category:

Click to view products by [XKB](#) manufacturer:

Other Similar products are found below :

[589158040000018](#) [MDF7C-18P-2.54DSA\(55\)](#) [FCN-268F036-G/BD](#) [FCN-268M012-G/0D](#) [FCN-268M024-G/1D](#) [MIS-048-01-F-D-DP-K](#)
[832-10-034-10-001000](#) [FX4C-80S-1.27DSA](#) [93696-330](#) [224393](#) [FCN-235D050-G/C](#) [210-93-314-41-105000](#) [MDF7-40DP-2.54DSA\(55\)](#)
[55323-1519](#) [069159702701000](#) [101A10019X](#) [105061100000861+](#) [75140-7012](#) [87471-650](#) [1744382-4](#) [063209](#) [10124054-515LF](#) [68685-603](#)
[8-1616154-3](#) [541371078](#) [IL-WX-10PB-HF-B-E1000E](#) [FX23-40P-0.5SV15B](#) [FCN-214J100-G/0](#) [354184](#) [P50-028-DDS-TG](#) [53309-2471](#)
[54546-2071](#) [1586617-1](#) [504248-1210](#) [504248-2010](#) [1-1437355-2](#) [9159005551906](#) [NDS100-004-BF](#) [93696-730LF](#) [91922-31141LF](#) [505274-](#)
[3440](#) [501493-2410](#) [504208-3410](#) [505006-0811](#) [505274-2040](#) [202436-1600](#) [202477-0414](#) [71660-7580](#) [73420-5192](#) [360-10-107-00-001000](#)