

**Specifications:**

规格:

1. Voltage rating: 250V AC/DC  
额定电压: 250V AC/DC
2. Current rating: 3A AC/DC  
额定电流: 3A AC/DC
3. Withstanding voltage: 500V AC/minute  
耐受电压: ≥500V AC/分钟
4. Temperature range: -55°C~+105°C  
温度范围: -55°C~+105°C
5. Insulation resistance: 1000MΩMIN  
绝缘电阻: ≥1000MΩ
6. Contact resistance: 30mΩMax  
接触电阻: ≥30mΩ

**Material:**

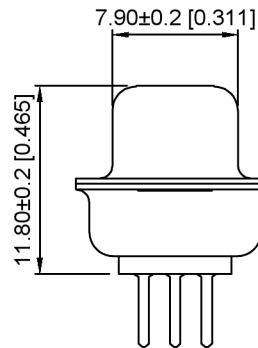
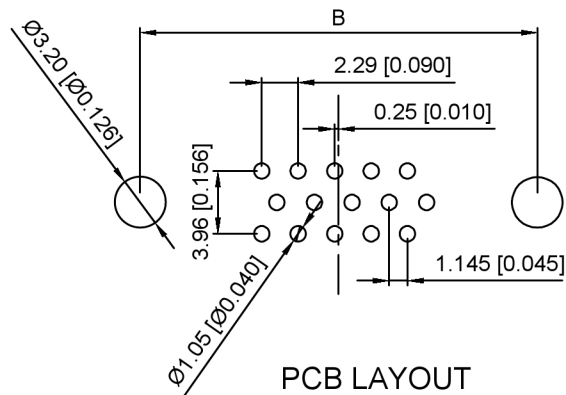
材料:

7. Rubber core: PBT UL94V-0  
胶芯: PBT UL94V-0
  8. The iron shell: SPCC Nivkel Plating/Tin Plating/Gold Plating  
铁壳: SPCC, 镀镍/镀锡/镀金
- B、成品不能有弯针，R角不一致等不良。

X05 XX F X X X X

① ② ③ ④ ⑤ ⑥ ⑦

- ① Series NO.
- ② Row No. Pin No. XX-15; 26; 44; 62
- ③ Welding Board Angle : F-Female
- ④ T: Tradutional C: Car-pin
- ⑤ Planting Category: 1:1U 2:2U 3:3U 4:5U 5:15U 6:30U 7: AuSn
- ⑥ Color: B-BLACK W-White BL-Blue
- ⑦ 1:TYPE-1; 2:TYPE-2; 5:TYPE-5; 7:TYPE-7



NUMBER OF POSITIONS	DIMENSION			
	A±0.25	B±0.13	C±0.38	D±0.25
15	16.35	24.99	30.80	19.28
26	24.75	33.32	39.20	27.51
44	38.35	47.04	53.50	41.28
62	54.75	63.50	69.40	57.71

铆合方式	TYPE-1: 铆合	TYPE-2: 前铆实心螺母	TYPE-7: 后铆鱼叉	TYPE-5: 铆鱼叉锁螺丝
图示				

MARK	DESCRIPTION	DATE	REVISED	APPROVED	UNSPECIFIED TOLERANCES
ΔX					ANGLAR ±5°
ΔX					L ≤ 4 ±0.2
ΔX					4 < L ≤ 16 ±0.3
					16 < L ≤ 63 ±0.4
					L > 63 ±0.5



DSND	SCALE: N/A	MODEL TYPE: D-USB
DWN	VIEW:	PART NO.: X05XXFXXXX
CHKD	UNIT: mm/in	DWG NO.: X-X05XXFXXXX
APPD	SIZE: A4	WEIGHT SHEET REVISION
		1/1 A0

XKB INDUSTRIAL PRECISION CO., LIMITED

## X-ON Electronics

Largest Supplier of Electrical and Electronic Components

*Click to view similar products for [D-Sub Standard Connectors](#) category:*

*Click to view products by [XKB](#) manufacturer:*

Other Similar products are found below :

[015-0339-000](#) [015-0341-000](#) [015-0349-000](#) [015-0350-000](#) [015-8544-011](#) [015-8755-001](#) [017041-0005](#) [020419-0104](#) [609-25P](#) [609-9P](#)  
[M24308/2-23Z](#) [CT0-24-10SC](#) [CT0-36-3PC](#) [CT0E20-8PS](#) [CT0F16S-1PS](#) [CT0TA16-11SXCA232](#) [CT1E20-19SS](#) [CT2-10SL-3SC](#) [CT2-14S-2PCA34](#) [CT2-18-11PCAU](#) [CT2-22-19SC](#) [CT2-36-5PC](#) [CT6-10SL-3SC](#) [CT6-10SL-4SC](#) [CT6-14S-2SC](#) [CT6-16-12SC](#) [CT6-18-10PSA206](#)  
[CT6-18-10PSA232](#) [CT6-18-11PXSA206](#) [CT6-18-11PXSA232](#) [CT6-22-10PS](#) [CT6-24-5PC](#) [CT6-9767-18-8-18-4SS](#) [CT6E14S-5SC](#)  
[CT6E14SA7SC](#) [CT6E20-14SS](#) [CT6E22-14PC](#) [CT6E22-14PS](#) [CT6E22-19PS](#) [CT6E22-22PS](#) [CT6E24-10SC](#) [CT6F16S-1SC](#) [CT6FA10SL-4PS](#)  
[CT6LA20-19PC](#) [CT6M20-19SS](#) [CT6NSB4-20-8SS](#) [CT6TC14S-6SCAU](#) [CT6TC14S-7PS](#) [6STD15SCT99S40X](#) [6STF09PCM05B70X](#)