

REVISIONS  
*(Unauthorized Signature(s))*

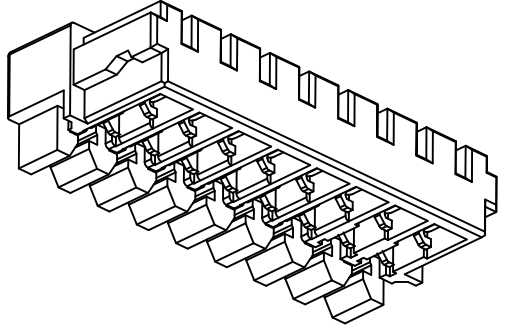
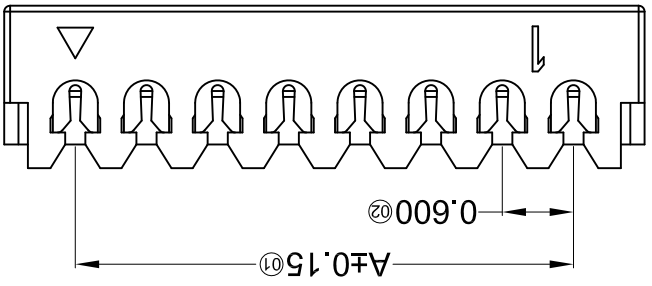
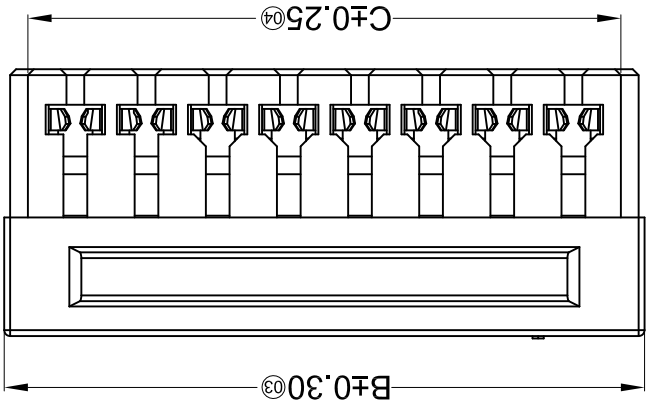
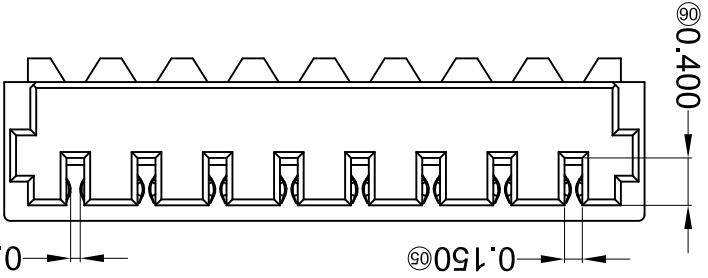
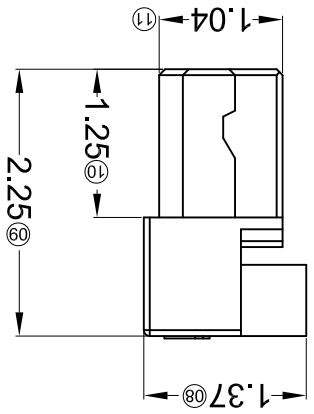
For and on behalf of  
**XKB INDUSTRIAL PRECISION CO., LIMITED**  
香港星坤工業精密有限公司

MARK	DESCRIPTION	DATE	REVISD	APPROVED	UNSPECIFIED TOLERANCES
△ X					L > 63 ± 0.5
△ X					16 < L ≤ 63 ± 0.4
△ X					4 < L ≤ 16 ± 0.3
					L ≤ 4 ± 0.2
					ANGULAR ± 5°

DATE	DATE	DATE	DATE	DATE	DATE
DSND	DWN	CHKD	APPD		
SCALE: N/A	VIEW:	UNIT: mm	SIZE: A4		
MODEL TYPE:	PART NO.:	0.60mm IDC Style Connectors			
	DWG NO.:				
	WEIGHT	SHEET	REVISION		
	1.0g	1/1	A0		

PART NO	Material	Wire Range	Insulation O.D.	Material(Terminal)	Finish(Terminal)	Suitable XKB Terminal
X0600H1-XXG-LPHF	LCP UL94V-0 Halogen Free(Black)	AWG#36/34	0.29mm(Max)	Phosphor Bronze	Gold-Flash	X0600W
X0600H1-XX-LPHF	LCP UL94V-0 Halogen Free(Black)				Tin-Plated	

Poles	Dimensions(mm)		
	A	B	C
02	0.60	1.80	1.35
03	1.20	2.40	1.95
04	1.80	3.00	2.55
05	2.40	3.60	3.15
06	3.00	4.20	3.75
07	3.60	4.80	4.35
08	4.20	5.40	4.95
09	4.80	6.00	5.55
10	5.40	6.60	6.15
11	6.00	7.20	6.75
12	6.60	7.80	7.35
13	7.20	8.40	7.95
14	7.80	9.00	8.55
15	8.40	9.60	9.15
16	9.00	10.20	9.75
17	9.60	10.80	10.35
18	10.20	11.40	10.95
19	10.80	12.00	11.55
20	11.40	12.60	12.15
22	12.60	13.20	12.75



- Series No. 01 02 03 04 05 06 07 08
- ① Series No.
  - ② Category: H-HSG
  - ③ Welding Board Angle: LHSG+hardware
  - ④ Row No.-Pin No.: XX-Single row
  - ⑤ Plating style: Blank-Tin plating; G-Gold plated
  - ⑥ Material: LP-LCP 94V-0
  - ⑦ Color: Blank-natural color Black
  - ⑧ HF-Halogen free
- X0600 H 1-XX X-LP XX HF

- Specifications :
- Voltage rating: 30V AC / DC
  - Current rating: 0.2A AC / DC
  - Withstanding voltage: 200V AC/minute
  - Temperature range: -25°C~+85°C
  - Insulation resistance: ≥100MΩ
  - Contact resistance: ≤30mΩ
  - After environmental testing: ≤40mΩ

## X-ON Electronics

Largest Supplier of Electrical and Electronic Components

*Click to view similar products for [xkb](#) manufacturer:*

Other Similar products are found below :

[SS-12D10L3](#) [U263-241N-4BQC11-1](#) [X3025WV-2x03-46SN](#) [X2026WVS-2x10D-LPSW](#) [X9357HF-2x12G-N2](#) [DSIC03LH-P](#) [TM-004-D2-03](#)  
[X6511WV-24H-C30D60](#) [DC-025LM-5A-2.0](#) [X03A10L13G](#) [PJ-309A-2](#) [TM-1201-A](#) [DM1-135C-1](#) [PJ-3582-W](#) [X6521WV-2x26H-C30D60](#)  
[X8826WR-2x05-N0SN](#) [DC-005G-2.5A-2.0](#) [X2015WR-2x04-N0SN](#) [X1011WVS-2x03-9TV01](#) [PJ-322A-Y](#) [DC-018-2.5A-2.0](#) [DM1-180D-1](#)  
[DM1-117C-1](#) [X3025WRS-2x02E-LPSW](#) [DSIC07LH-P](#) [DS-09BLP](#) [DC-049A](#) [TS-1101-C-W](#) [TS-1159UB-B-B-W](#) [X2015H-2x05-N0](#)  
[X3025WR-06-N0SN](#) [DA-12RP](#) [DA-09RP](#) [X03A10L51G](#) [X1015WM-30L-C](#) [X2510WRS-05-9TSN](#) [TM-004-D3-03](#) [XKB5858-W-F-75](#)  
[X1002WVS-07E-LPSWHF](#) [TS-1159UB-B-D-BL](#) [X6521WV-2x11H-C30D60](#) [X2000WVS-03-9TSN](#) [X05A26H24G](#) [X2510WRS-02-9TSN](#)  
[X05A20H24G](#) [X9821WV-11-N0SN](#) [X5050WV-04-N2SN](#) [X6511FV-03-C85D32](#) [X6521WR-2x16H-C30D60](#) [X6511WVS-05H-C60D48-R1](#)