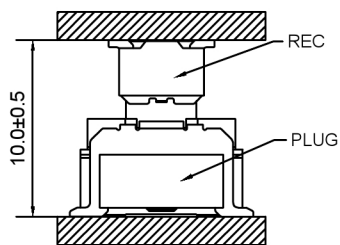
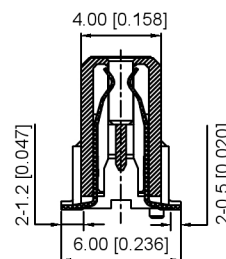


X方向浮动量/X Directio : ±0.7mm



Y方向浮动量/Y Directio : ±0.7mm



SECT:A-A

Specifications:

规格:

Voltage rating:50V AC/DC

额定电压: 50V AC/DC

Current rating:0.5A AC/DC

额定电流: 0.5A AC/DC

Withstanding voltage:200V AC/minute

耐受电压: 200V AC/分钟

Temperature range:-40°C~+105°C

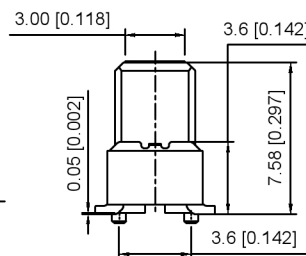
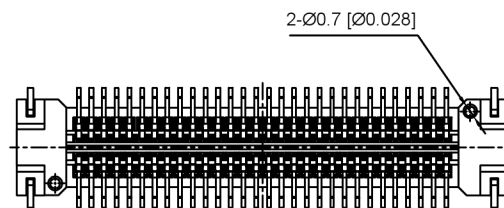
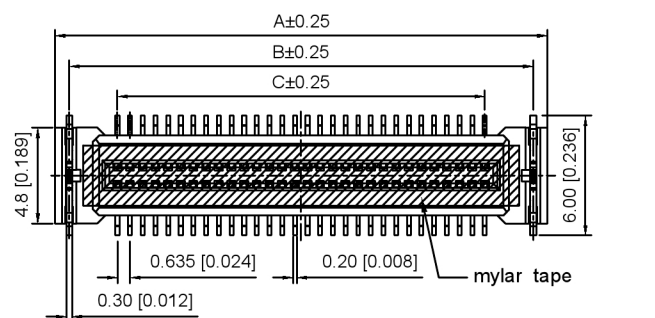
温度范围: -40°C~+105°C

Insulation resistance:500MΩ Max

绝缘电阻: 500MΩ Max

Contact resistance:20mΩ Max

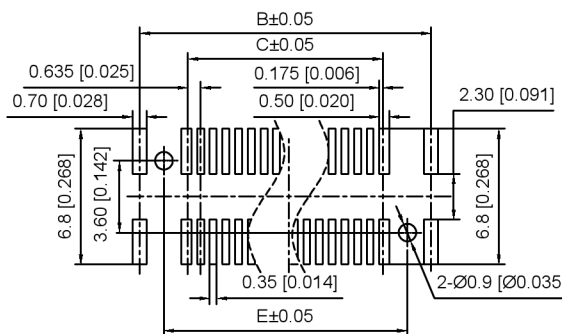
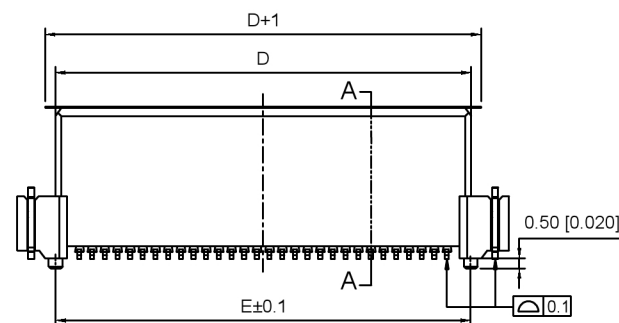
接触电阻: 20mΩ Max



X0635 F V S - XX B2 S- LP V01

- ①
- ②
- ③
- ④
- ⑤
- ⑥
- ⑦
- ⑧
- ⑨

- 1.Series No
- 2.Category:Female
- 3.Welding Board Angle:V-Stright 180°
- 4.Welding Way:S-SMT
- 5.Row No.Pin No:XX-20~100P
- 6.Height:B2=second generation B Type 10.0mm, Mating height 10.0±0.5
- 7.Special No:S-With positioning column
- 8.Material:LP-LCP UL94V-0
- 9.Plating:V01-Gold paltd 4u" MIN



PCB LAYOUT

| Poles | Dimensions(mm) | | | | |
|-------|----------------|--------|--------|--------|--------|
| | A | B | C | D | E |
| 20 | 11.950 | 10.550 | 5.715 | 8.150 | 8.150 |
| 30 | 15.125 | 13.725 | 8.890 | 11.325 | 11.325 |
| 40 | 18.300 | 16.900 | 12.065 | 14.500 | 14.500 |
| 50 | 21.475 | 20.075 | 15.240 | 17.675 | 17.625 |
| 60 | 24.650 | 23.250 | 18.415 | 20.850 | 20.850 |
| 70 | 27.825 | 26.425 | 21.590 | 24.025 | 24.025 |
| 80 | 31.000 | 29.600 | 24.765 | 27.200 | 27.200 |
| 90 | 34.175 | 32.775 | 27.940 | 30.375 | 30.375 |
| 100 | 37.350 | 35.950 | 31.115 | 33.550 | 33.550 |

| | | | |
|----------------------|----------|-----------------|--------------------|
| X0635FVS-XXB2S-LPV01 | LCP | Phosphor Bronze | X0635W |
| PART NO | Material | Material(Pin) | Suitable XKB Wafer |

| | | |
|------|-------------|--------------------------------------|
| DSND | SCALE: N/A | MODEL TYPE: 0.635mm BTB Connector |
| DWN | VIEW: | PART NO.: X0635FVS-XXB2S-LPV01 |
| CHKD | UNIT: mm/in | DWG NO.: X-X0635FVS-XXB2S-LPV01 |
| APPD | SIZE: A4 | WEIGHT |



XKB INDUSTRIAL PRECISION CO., LIMITED

| | |
|-------|----------|
| SHEET | REVISION |
| 1/1 | A0 |

| | |
|------------------------|------|
| ANGLAR | ±5° |
| L ≤ 4 | ±0.2 |
| 4 < L ≤ 16 | ±0.3 |
| 16 < L ≤ 63 | ±0.4 |
| L > 63 | ±0.5 |
| UNSPECIFIED TOLERANCES | |

广东星坤科技股份有限公司

| | | | |
|------|------|------|------|
| DATE | DATE | DATE | DATE |
| DATE | DATE | DATE | DATE |
| DATE | DATE | DATE | DATE |
| DATE | DATE | DATE | DATE |

文件工程章

| | | | |
|-----------|------|-----------|------|
| REVISIONS | DATE | REVISIONS | DATE |
| REVISIONS | DATE | REVISIONS | DATE |
| REVISIONS | DATE | REVISIONS | DATE |
| REVISIONS | DATE | REVISIONS | DATE |

www.helloxkb.com www.helloxkb.cn www.xk-dg.cn

X-ON Electronics

Largest Supplier of Electrical and Electronic Components

Click to view similar products for [Board to Board & Mezzanine Connectors](#) category:

Click to view products by [XKB](#) manufacturer:

Other Similar products are found below :

[589158040000018](#) [MDF7C-18P-2.54DSA\(55\)](#) [FCN-268F036-G/BD](#) [FCN-268M012-G/0D](#) [FCN-268M024-G/1D](#) [FCN-723J004/1](#) [MIS-048-01-F-D-DP-K](#) [832-10-034-10-001000](#) [FX4C-80S-1.27DSA](#) [93696-330](#) [224393](#) [FCN-235D050-G/C](#) [210-93-314-41-105000](#) [2-22603-0](#) [MDF7-40DP-2.54DSA\(55\)](#) [5031084030](#) [MIT-114-03-F-D-K](#) [55323-1519](#) [45970-4130](#) [YFT-20-05-H-03-SB-K](#) [503308-3040](#) [026-6203-PDB](#) [027-6203-PDB](#) [069159702701000](#) [101A10019X](#) [105061100000861+](#) [55650-0588-C](#) [75140-7012](#) [87471-650](#) [YTW-30-07-H-Q-410-140](#) [YTT-112-01-H-Q](#) [063209](#) [0717420006](#) [FCN-268F024-G0D](#) [10124054-515LF](#) [68685-603](#) [8-1616154-3](#) [MIS-019-01-F-D](#) [IL-WX-10PB-HF-B-E1000E](#) [YFT-50-05-H-10-SB-K](#) [FCN-268M024-G/3D](#) [MDF7-16DP-2.54DSA\(55\)](#) [AXE810124](#) [FCN-214J100-G/0](#) [FCN-230C068-E/S](#) [AXE812124](#) [74220-001](#) [354184](#) [P50-028-DDS-TG](#) [53309-2471](#)