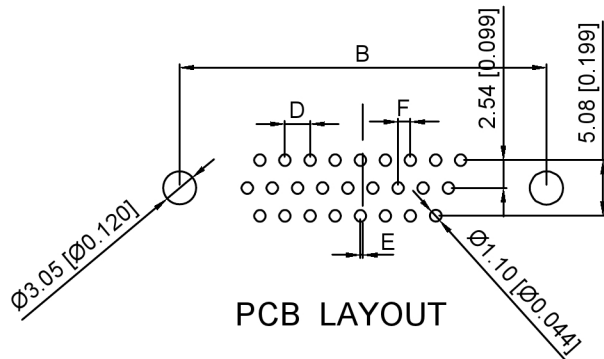
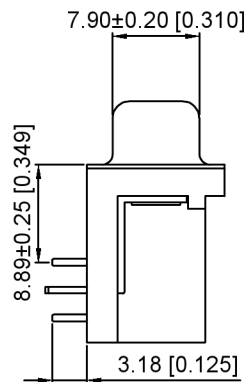
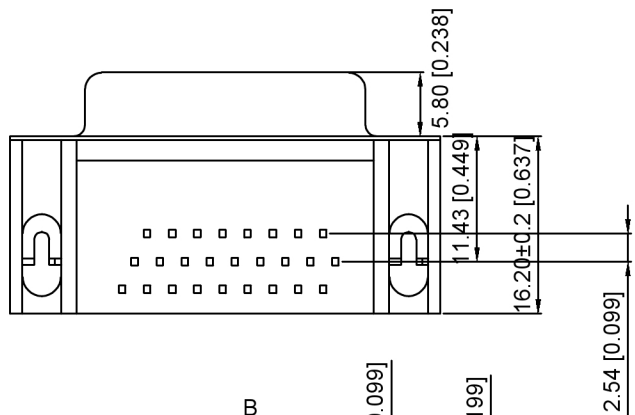


3D VIEW



Specifications:

规格:
 Current rating:5A AC/DC
 额定电流: 5A AC/DC
 Voltage rating:500V AC
 额定电压: 500V AC
 Withstanding voltage:500V AC/MIN
 耐受电压: ≥500V AC/分钟
 Temperature range:-55℃-+105℃
 温度范围: -55℃-+105℃
 Insulation resistance:1000MΩMIN
 绝缘电阻: ≥1000MΩ
 Contact resistance:30mΩMAN
 接触电阻:≤30mΩ
 Material And FINISHED:
 材料和成本:
 INSULATOR:PBT+30% GF UL 94V-0
 绝缘体: PBT+30% GF UL 94V-0
 SHELL: Steel Plated Ni
 外壳: 钢 镀镍
 CONTACT MATERIAL:Brass
 触点材料: 黄铜

X06 XX F T X X X

① ② ③ ④ ⑤ ⑥ ⑦

- ① Series NO.
- ② Row No.Pin No:XX-15;26;44;62
- ③ Welding Board Angle :F-Female
- ④ T:Tradutional
- ⑤ Planting Cateogtry:1:1U' ;2:2U' ;3:3U' ;4:5U' ;5:15U' 6:30U' ;7:AuSn
- ⑥ B:Black W:White BL:Blue Y:Yellow G:Green R:Red
- ⑦ 1:TYPE-1; 2:TYPE-2; 3:TYPE-3; 4:TYPE-4; 6:TYPE-6

铆合方式	TYPE-1: 铆合	TYPE-6: 直铆锁	TYPE-3: 叉锁	TYPE-2: 铆合锁螺丝
图示				

NO.OF CONTACT	A	B	C	D	E	F
15	16.35	24.99	30.80	2.29	0.28	1.145
26	24.75	33.30	39.20	2.29	0.50	1.145
44	38.35	47.04	53.00	2.29	0.50	1.145
62	54.75	63.50	69.40	2.42	0.58	1.21

广东星坤科技股份有限公司

Δx		日期
非Δx		
表Δx		
MARK		

文件工程章

DESCRIPTION	DATE	REVISED	APPROVED	UNSPECIFIED TOLERANCES
				ANGLAR ±5°
				L≤ 4 ±0.2
				4<L≤ 16 ±0.3
				16<L≤ 63 ±0.4
				L> 63 ±0.5

XKB

XKB INDUSTRIAL PRECISION CO.,LIMITED

DSND	SCALE: N/A	MODEL TYPE:
DWN	VIEW:	D-USB
CHKD	UNIT: mm/in	PART NO.: X06XXFTXXX
APPD	SIZE: A4	DWG NO.: X-X06XXFTXXX
		WEIGHT
		SHEET 1/1
		REVISION A0

X-ON Electronics

Largest Supplier of Electrical and Electronic Components

Click to view similar products for [D-Sub Standard Connectors](#) category:

Click to view products by [XKB](#) manufacturer:

Other Similar products are found below :

[015-0339-000](#) [015-0341-000](#) [015-0349-000](#) [015-0350-000](#) [015-8544-011](#) [015-8755-001](#) [017041-0005](#) [020419-0104](#) [609-25P](#) [609-9P](#)
[M24308/2-23Z](#) [CT0-24-10SC](#) [CT0-36-3PC](#) [CT0E20-8PS](#) [CT0F16S-1PS](#) [CT0TA16-11SXCA232](#) [CT1E20-19SS](#) [CT2-10SL-3SC](#) [CT2-14S-2PCA34](#) [CT2-18-11PCAU](#) [CT2-22-19SC](#) [CT2-36-5PC](#) [CT6-10SL-3SC](#) [CT6-10SL-4SC](#) [CT6-14S-2SC](#) [CT6-16-12SC](#) [CT6-18-10PSA206](#)
[CT6-18-10PSA232](#) [CT6-18-11PXSA206](#) [CT6-18-11PXSA232](#) [CT6-22-10PS](#) [CT6-24-5PC](#) [CT6-9767-18-8-18-4SS](#) [CT6E14S-5SC](#)
[CT6E14SA7SC](#) [CT6E20-14SS](#) [CT6E22-14PC](#) [CT6E22-14PS](#) [CT6E22-19PS](#) [CT6E22-22PS](#) [CT6E24-10SC](#) [CT6F16S-1SC](#) [CT6FA10SL-4PS](#)
[CT6LA20-19PC](#) [CT6M20-19SS](#) [CT6NSB4-20-8SS](#) [CT6TC14S-6SCAU](#) [CT6TC14S-7PS](#) [6STD15SCT99S40X](#) [6STF09PCM05B70X](#)