

Specifications:

规格:

Voltage rating:300V AC/DC

额定电压: 300V AC/DC

Current rating:1A AC/DC

额定电流: 1A AC/DC

Withstanding voltage:500V AC/minute

耐受电压: 500V AC/分钟

Temperature range:-55°C--+125°C

温度范围: -55°C--+125°C

Insulation resistance: 1000MΩ min

绝缘电阻: 1000MΩ Min

Contact resistance:40mΩ Max

接触电阻: 40mΩ Max

X0811 F V S- XX X S- LP V01

① ② ③ ④ ⑤ ⑥ ⑦ ⑧ ⑨

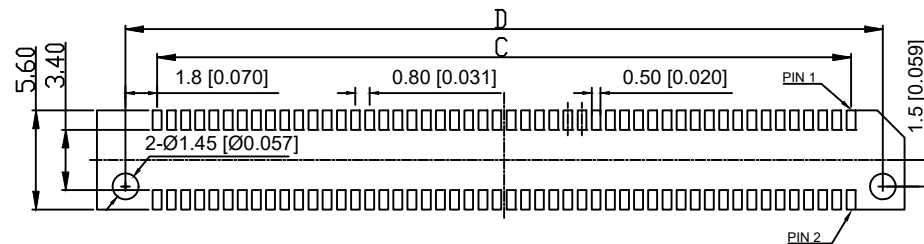
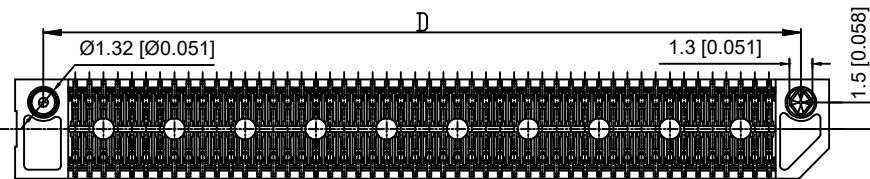
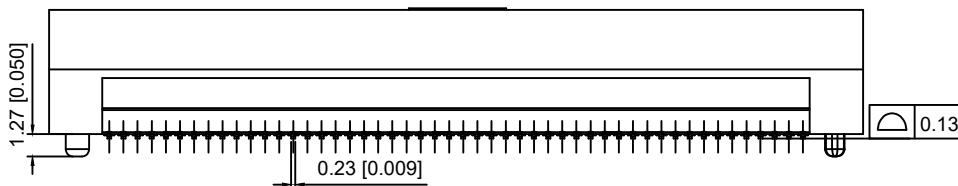
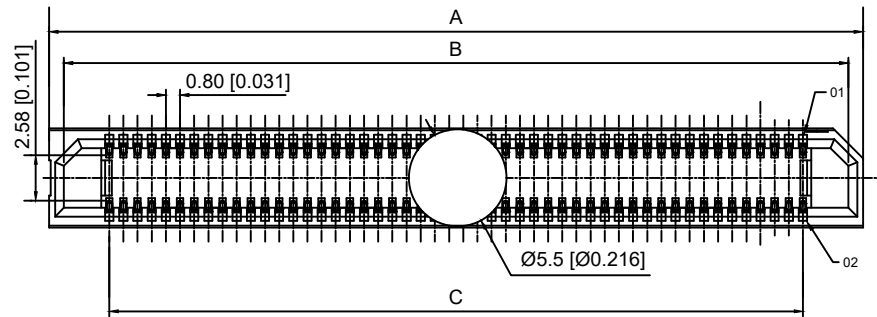
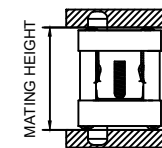
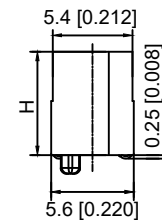
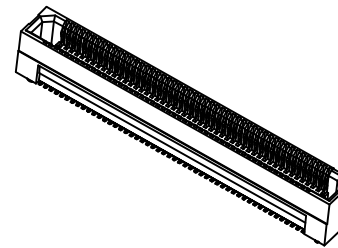
- 1.Series No
- 2.Category:Female
- 3.Welding Board Angle:V-Straight 180°
- 4.Welding Way:S-SMT
- 5.Row No-Pin No:XX-10Pin-200Pin
- 6.Height:A=5.0; B=7.0; C=9.0mm
- 7.special No:S-With positioning Column
- 8.Material:LP-LCP UL94V-0
- 9.Plating: V01-Gold Flash

| MATED HEIGHT | | | | |
|--------------|-------|-------|-------|-------|
| Female | Male | | | |
| | 2.00 | 5.00 | 8.00 | 9.00 |
| 5.00 | 7.00 | 10.00 | 13.00 | 14.00 |
| 7.00 | 9.00 | 12.00 | 15.00 | 16.00 |
| 9.00 | 11.00 | 14.00 | 17.00 | 18.00 |

| HEIGHT | H |
|--------|------|
| 5.00 | 5.10 |
| 7.00 | 7.00 |
| 9.00 | 9.00 |

| PART NO | Material | Material(Pin) | Suitable XKB Wafer |
|---------------------|----------|-----------------|--------------------|
| X0811FVS-XXXS-LPV01 | LCP | Phosphor Bronze | X0811W |

| DSND | SCALE: N/A | MODEL TYPE: |
|------|-------------|--------------------------------|
| DWN | VIEW: | 0.80mm BTB Style Connector |
| CHKD | UNIT: mm/in | PART NO.: X0811FVS-XXXS-LPV01 |
| APPD | SIZE: A4 | DWG NO.: X-X0811FVS-XXXS-LPV01 |



Recommended PCB Layout

| Poles | A | B | C | D |
|-------|-------|-------|-------|-------|
| 10 | 10.00 | 8.32 | 3.32 | 6.80 |
| 20 | 14.00 | 12.32 | 7.20 | 10.80 |
| 22 | 14.80 | 13.12 | 8.00 | 11.60 |
| 24 | 15.60 | 13.92 | 8.88 | 12.40 |
| 26 | 16.40 | 14.72 | 9.60 | 13.20 |
| 30 | 18.00 | 16.32 | 11.20 | 14.80 |
| 40 | 22.00 | 20.32 | 15.20 | 18.80 |
| 50 | 26.00 | 24.32 | 19.20 | 22.80 |
| 60 | 30.00 | 28.32 | 23.20 | 26.80 |
| 80 | 38.00 | 36.32 | 31.20 | 34.80 |
| 100 | 46.00 | 44.32 | 39.20 | 42.80 |
| 120 | 54.00 | 52.32 | 47.20 | 50.80 |
| 140 | 62.00 | 60.32 | 55.20 | 58.80 |
| 150 | 66.00 | 64.32 | 59.20 | 62.80 |
| 200 | 86.00 | 84.32 | 79.20 | 82.80 |



XKB INDUSTRIAL PRECISION CO., LIMITED

| MARK | DESCRIPTION | DATE | REVISED | APPROVED | UNSPECIFIED TOLERANCES |
|------|-------------|------|---------|----------|------------------------|
| ΔX | | | | | ANGLAR ±5° |
| ΔX | | | | | L ≤ 4 ±0.2 |
| ΔX | | | | | 4 < L ≤ 16 ±0.3 |
| | | | | | 16 < L ≤ 63 ±0.4 |
| | | | | | L > 63 ±0.5 |

X-ON Electronics

Largest Supplier of Electrical and Electronic Components

Click to view similar products for [Board to Board & Mezzanine Connectors](#) category:

Click to view products by [XKB](#) manufacturer:

Other Similar products are found below :

[589158040000018](#) [MDF7C-18P-2.54DSA\(55\)](#) [FCN-268F036-G/BD](#) [FCN-268M012-G/0D](#) [FCN-268M024-G/1D](#) [MIS-048-01-F-D-DP-K](#)
[832-10-034-10-001000](#) [FX4C-80S-1.27DSA](#) [93696-330](#) [224393](#) [FCN-235D050-G/C](#) [210-93-314-41-105000](#) [MDF7-40DP-2.54DSA\(55\)](#)
[MIT-114-03-F-D-K](#) [55323-1519](#) [026-6203-PDB](#) [027-6203-PDB](#) [069159702701000](#) [101A10019X](#) [105061100000861+](#) [55650-0588-C](#) [75140-](#)
[7012](#) [87471-650](#) [YTW-30-07-H-Q-410-140](#) [YTT-112-01-H-Q](#) [063209](#) [10124054-515LF](#) [68685-603](#) [8-1616154-3](#) [MIS-019-01-F-D](#) [YTE-](#)
[12002H6740](#) [YTQ-12103HQ](#) [541371078](#) [IL-WX-10PB-HF-B-E1000E](#) [FCN-214J100-G/0](#) [FCN-230C068-E/S](#) [354184](#) [MIT-019-04-F-D-K](#)
[P50-028-DDS-TG](#) [53309-2471](#) [54546-2071](#) [1586617-1](#) [504208-3010](#) [504208-5010](#) [504248-1010](#) [504248-1210](#) [504248-2010](#) [LST-115-07-S-](#)
[D](#) [LST-105-07-G-D](#) [9159005551906](#)