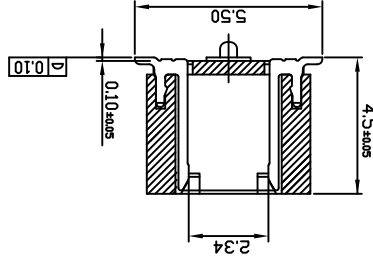
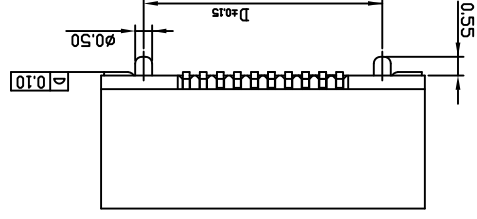
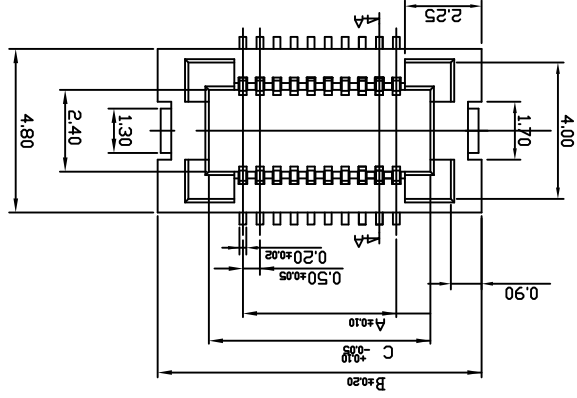
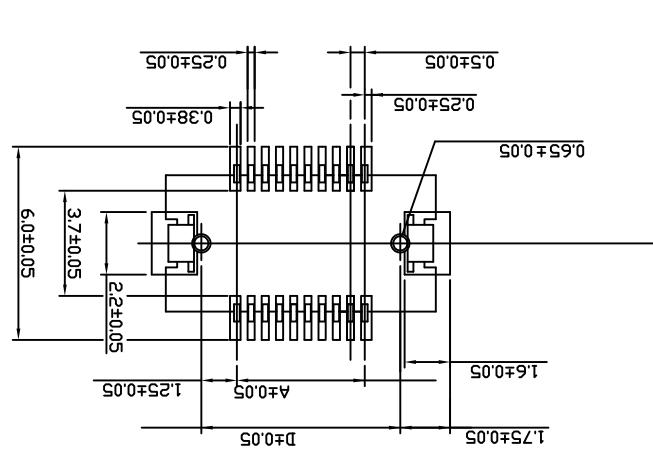


MARK		REVISIONS				UNSPECIFIED TOLERANCES			
Δ X		DATE	REVISED	APPROVED	L > 63	±0.5			
Δ X					16 < L ≤ 63	±0.4			
Δ X					4 < L ≤ 16	±0.3			
					L ≤ 4	±0.2			
					ANGULAR	±5°			
DESCRIPTION		DATE	DATE	DATE	DATE	DATE	DATE	DATE	DATE
DSND		SCALE: N/A	DWN	CHKD	APPD	XKB INDUSTRIAL PRECISION CO., LIMITED			
MODEL TYPE: BTB CONNECTOR		PART NO.:	VIEW:	UNIT: mm	SIZE: A4	WEIGHT 1.0g			
						SHEET 1/1			
						REVISION A0			



X1015 W F-XX X-X
 ① ② ③ ④ ⑤ ⑥

DIM.A = 0.50 * No. of Spaces
 DIM.B = DIM.A + 5.0
 DIM.C = DIM.A + 2.0
 DIM.D = DIM.A + 2.5
 * Available in 10 through 80 circuits

- ① Series No.
- ② Category: W-Wafer
- ③ Wedging Board Angle: F-Female
- ④ No. of Circuits
- ⑤ Special No: S-With Positioning Column
- ⑥ Height:

A: Dim.E = 2.0mm B: Dim.E = 2.5mm F: Dim.E = 4.5mm
 C: Dim.E = 3.0mm E: Dim.E = 4.0mm

X-ON Electronics

Largest Supplier of Electrical and Electronic Components

Click to view similar products for [Board to Board & Mezzanine Connectors](#) category:

Click to view products by [XKB](#) manufacturer:

Other Similar products are found below :

[10135583-642402LF](#) [89885-310LF](#) [589158040000018](#) [6-1393048-0](#) [68683-613](#) [MDF7-12DP-2.54DSA](#) [MDF7-18P-2.54DSA\(01\)](#) [MDF7-20DP-2.54DSA](#) [MDF7-26D-2.54DSA\(55\)](#) [MDF7-3P-2.54DSA\(01\)](#) [MDF7B-20P-2.54DSA\(01\)](#) [MDF7B-3P-2.54DSA\(55\)](#) [MDF7C-11P-2.54DSA\(55\)](#) [MDF7C-18P-2.54DSA\(55\)](#) [MDF7C-5P-2.54DSA\(01\)](#) [MDF7P-5P-2.54DSA\(55\)](#) [75234-0516](#) [FCN-230C068-11](#) [FCN-268F012-G/BD](#) [FCN-268F036-G/BD](#) [FCN-268M012-G/0D](#) [FCN-268M024-G/1D](#) [FCN-360C008-C](#) [FCN-360C040-C](#) [FCN-723J004/1](#) [MIS-048-01-F-D-DP-K](#) [832-10-034-10-001000](#) [93696-325LF](#) [11828-1FA](#) [AXK630345P](#) [18097-0013](#) [ICA-328STT](#) [2007042-2](#) [304400-2](#) [FCN-214Q030-G/0](#) [FCN-215Q040-G/0](#) [FCN-230C068-ESA](#) [FCN-234P048-G/0](#) [FCN-235D050-G/C](#) [FCN-360A3](#) [FCN-360C040-B](#) [210-93-314-41-105000](#) [2-22603-0](#) [379-064-521-202](#) [MDF7-12P-2.54DSA\(01\)](#) [MDF7-16P-2.54DS\(56\)](#) [MDF7-40DP-2.54DSA\(55\)](#) [MDF7-8P-2.54DSA\(55\)](#) [MDF7B-16P-2.54DSA\(55\)](#) [AXG720047](#)