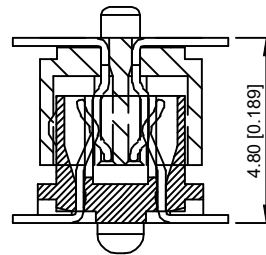
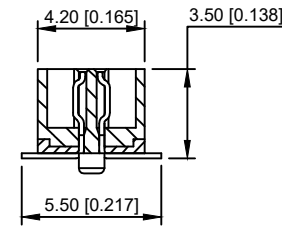


Recommended P.C.B Layout(Top Side)
(PCB BOARD TOLERANCE±0.05)



ASSEMBLY
SCALE 2:1

■ Specifications :

- Voltage rating: 50V AC / DC
- Current rating: 0.5A AC / DC
- Withstanding voltage: 200V AC/minute
- Temperature range: -40°C~+105°C
- Insulation resistance:≥500MΩ
- Contact resistance: ≤50mΩ
- After environmental testing: ≤60mΩ
- Max.Processing Temp:230°C for 30-60 seconds
- (260°C for 10 seconds)

X1016 W M-XX -XX XX XX
① ② ③ ④ ⑤ ⑥ ⑦

- ① Series No.
- ② Category: W-wafer
- ③ Welding Board Angle: M-Male
- ④ Row No.-Pin No.: XX-21P,31P,41P,51P
- ⑤ Plug the Pin & Special No.:
- ⑥ Material: 46-PA46 94V-0 ; 6T-PA6T 94V-0 ;
- ⑦ Planting Category: SN-Bright tin plating ; V01-Gold
- ⑧ FlashColor: Blank-natural color

NO.OF Contacts	Dimensions				
	A	B	C	E	D
19pin	13.40	8.00	9.00	12.10	15.10
21pin	14.40	9.00	10.00	13.10	16.10
31pin	19.40	14.00	15.00	18.10	21.10
41pin	24.40	19.00	20.00	23.10	26.10
51pin	29.40	24.00	25.00	28.10	31.10

X1016WM-XX-46XX	Nylon 46 UL 94V-0	Phosphor Bronze	Tin-Plated or glod flash	Brass	Tin-Plated
X1016WM-XX-6TXX	Nylon 6T UL 94V-0				
PART NO	Material	Material(Pin)	Finish(Pin)	Material (Solder Tab)	Finish (Solder Tab)

DSND		DATE		SCALE: N/A	MODEL TYPE: X1016WM-XX-XXXX		
DWN		DATE		VIEW:	PART NO.:		
CHKD		DATE		UNIT: mm/in	1.00 mm Crimp Style Connectors		
APPD		DATE		SIZE: A4	DWG NO.:		
				XKB INDUSTRIAL PRECISION CO.,LIMITED	WEIGHT	SHEET	REVISION
					1.0g	1/1	A0

ANGLAR	±5°
L ≤ 4	±0.2
4 < L ≤ 16	±0.3
16 < L ≤ 63	±0.4
L > 63	±0.5
UNSPECIFIED TOLERANCES	

X-ON Electronics

Largest Supplier of Electrical and Electronic Components

Click to view similar products for [Board to Board & Mezzanine Connectors](#) category:

Click to view products by [XKB](#) manufacturer:

Other Similar products are found below :

[589158040000018](#) [FCN-268F036-G/BD](#) [FCN-268M012-G/0D](#) [FCN-268M024-G/1D](#) [MIS-048-01-F-D-DP-K](#) [832-10-034-10-001000](#) [FX4C-80S-1.27DSA](#) [93696-330](#) [224393](#) [FCN-235D050-G/C](#) [210-93-314-41-105000](#) [MDF7-40DP-2.54DSA\(55\)](#) [55323-1519](#) [069159702701000](#) [101A10019X](#) [105061100000861+](#) [75140-7012](#) [87471-650](#) [1744382-4](#) [063209](#) [10124054-515LF](#) [68685-603](#) [8-1616154-3](#) [541371078](#) [IL-WX-10PB-HF-B-E1000E](#) [FX23-40P-0.5SV15B](#) [FCN-214J100-G/0](#) [354184](#) [P50-028-DDS-TG](#) [53309-2471](#) [54546-2071](#) [1586617-1](#) [504248-1210](#) [504248-2010](#) [1-1437355-2](#) [9159005551906](#) [NDS100-004-BF](#) [93696-730LF](#) [91922-31141LF](#) [505274-3440](#) [501493-2410](#) [504208-3410](#) [505006-0811](#) [505274-2040](#) [202436-1600](#) [202477-0414](#) [71660-7580](#) [73420-5192](#) [360-10-107-00-001000](#) [AC01S050WA1R500](#)