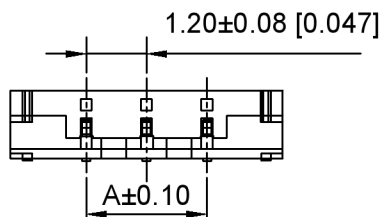
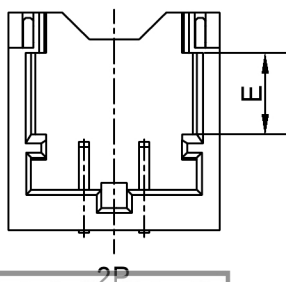
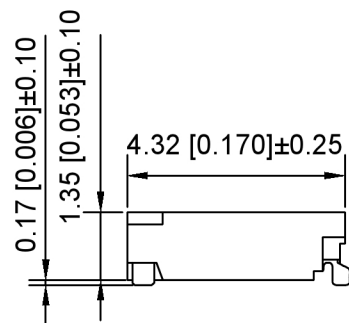
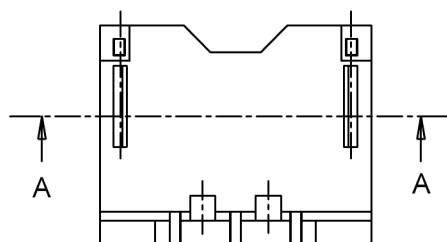


RECOMMENDED PCB LAYOUT  
GENERAL TOLERANCE±0.05



■ Specifications :

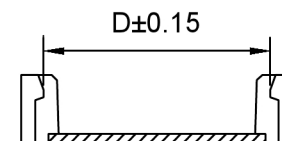
- Voltage rating: 50 V AC / DC
- Current rating: 2A AC / DC
- Withstanding voltage: 500V AC/minute
- Temperature range: -25°C~+85°C
- Insulation resistance: 100MΩ Min
- Contact resistance: 20mΩ Max
- After environmental testing : 20mΩ Max

X1203 WRS-XX- 6TV01  
① ②③④ ⑤ ⑥ ⑦

- ① Series No.
- ② Category : W-WAFER
- ③ Welding Board Angle : R-Stright 90°
- ④ Welding way: S-SMT
- ⑤ Row No.-Pin No.: XX-02P~03P
- ⑥ Material : N0-PA6T 94V-0
- ⑦ Plating Category: V01-All Gold Flash

X1203WRS-XX-6TV0	N0-PA6T 94V-0	Phosphor Bronze	Gold Flash	X1203H
PART NO	Material	Material(pin)	Finish(pin)	Suitable XKB Housing

Poles	Dimensions(mm)				
	A	B	C	D	E
02	1.20	2.70	4.20	3.20	1.50
03	2.40	3.90	5.40	4.40	1.50



剖面 A-A

广东星坤科技股份有限公司

日期

文件工程章

ANGLAR	±5°
L ≤ 4	±0.2
4 < L ≤ 16	±0.3
16 < L ≤ 63	±0.4
L > 63	±0.5
UNSPECIFIED TOLERANCES	



XKB INDUSTRIAL PRECISION CO., LIMITED

DSND	SCALE: N/A	MODEL TYPE: X1203WRS-XX-6TV01
DWN	VIEW:	PART NO.:
CHKD	UNIT: mm/in	DWG NO.:
APPD	SIZE: A4	X-X1203WRS-XX-6TV01
		WEIGHT
		SHEET
		REVISION
		1/1
		A0

## X-ON Electronics

Largest Supplier of Electrical and Electronic Components

*Click to view similar products for [Headers & Wire Housings](#) category:*

*Click to view products by [XKB](#) manufacturer:*

Other Similar products are found below :

[57102-F02-18ULF](#) [58102-G61-06LF](#) [582553-1](#) [009176003701906](#) [01.001.5753.1](#) [0050291907](#) [02.125.8002.8](#) [609-3404](#) [61062-3](#)  
[CSU011177004](#) [622-0430](#) [622-3653LF](#) [63453-116](#) [636-1030](#) [636-1427](#) [636-3427](#) [636-4007](#) [641938-9](#) [65495-038](#) [65692-001LF](#) [65781-018](#)  
[65781-047](#) [65817-010LF](#) [65817-015LF](#) [66207-023LF](#) [67095-007LF](#) [67601157](#) [68631-112](#) [68645-018](#) [699319-000](#) [M90C108951C](#)  
[70.362.1628.0](#) [70-4210](#) [70-4226B](#) [70-4853B](#) [707-5028](#) [71.350.2428.0](#) [71961-016LF](#) [733-134](#) [733-162](#) [754199-000](#) [760-3052](#) [80.063.4001.1](#)  
[800-90-001-10-001000](#) [800-90-010-10-002000](#) [801-43-002-10-013000](#) [801-43-006-10-002000](#) [803-41-018-10-001000](#) [803-43-024-10-](#)  
[001000](#) [803-93-012-10-001000](#)