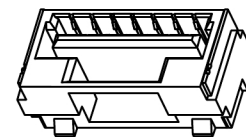
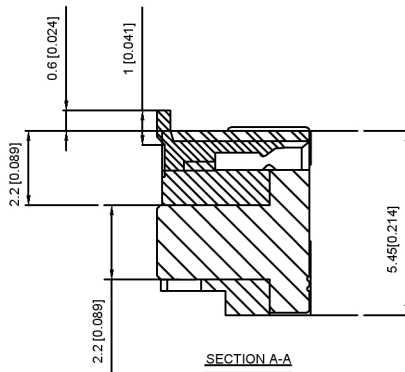
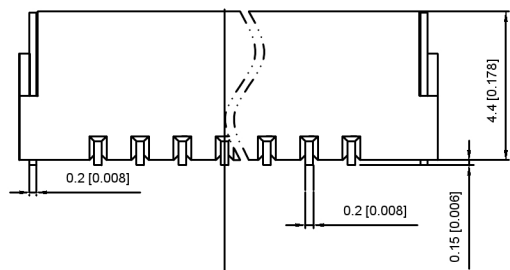


PCB LAYOUT

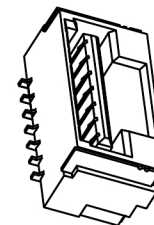


Specifications:

- 规格:
- Voltage rating: 50V AC/DC
 - 额定电压: 50V AC/DC
 - Current rating: 1A AC/DC
 - 额定电流: 1A AC/DC
 - Contact Resistance: ≤20MΩ
 - 接触电阻: ≤20MΩ
 - Insulation Resistance: ≥100MΩ
 - 绝缘电阻: ≥100MΩ
 - Dielectric strength: 250V AC/minute
 - 耐压: 250V AC/minute
 - Plug-in force: ≤3N (per pin)
 - 插入力: ≤3N (per pin)
 - Plug-out force: ≥0.3N (per pin)



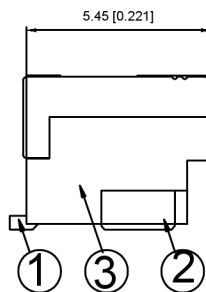
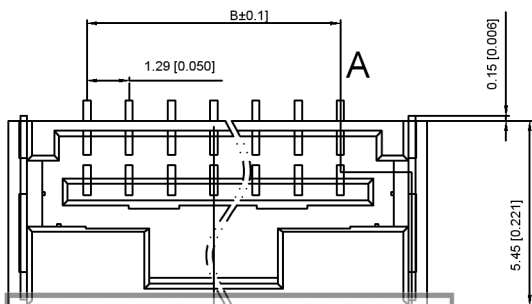
SECTION A-A



X1254W V S-XX-LP SW
① ② ③ ④ ⑤ ⑥ ⑦

- ① Series No
- ② Category: W-WAFER
- ③ Welding Board Angle: V-90°
- ④ Welding Way: S-SMT
- ⑤ Row No-Pin No: XX-02-07PIN
- ⑥ Material: LP-LCP 94V-0
- ⑦ Plating Category: SW-Matte Tin Plating (Tin: 70u Min)

Circuits	Dinansin mm		Circuits	Dinansin mm	
	A	B		A	B
2	5.58	1.25	6	10.85	6.25
3	7.10	2.50	7	12.10	7.50
4	8.35	3.75			
5	9.60	5.00			



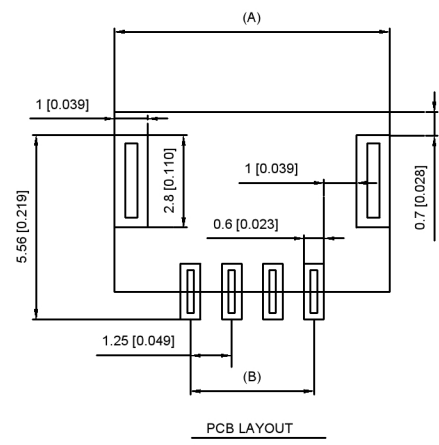
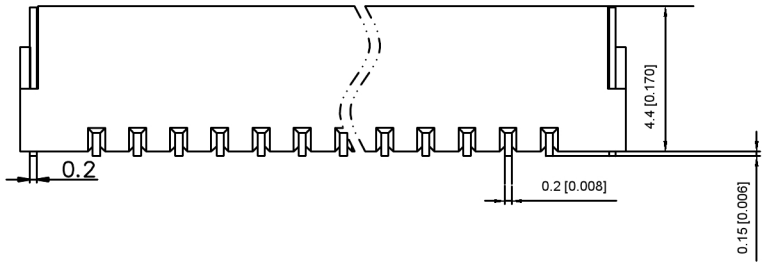
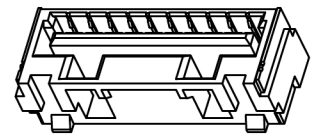
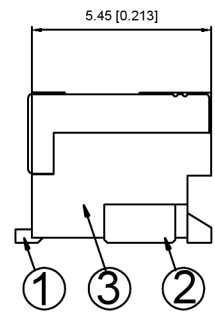
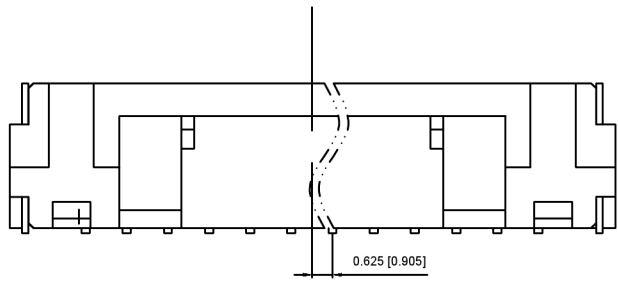
X1254WVS-XX-LPSW	PA9T UL 94V-0	Tin-Plated	Tin-Plated	X1254W
PART NO	Material	Material (pin)	Finish (Pin)	Suitable XKB Terminal

广东星坤科技股份有限公司

生效 日期

文件工程章

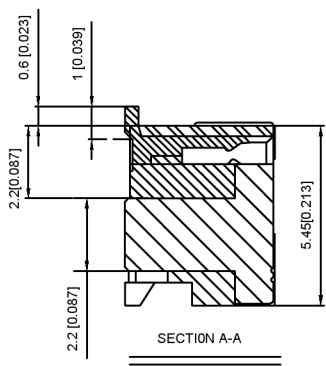
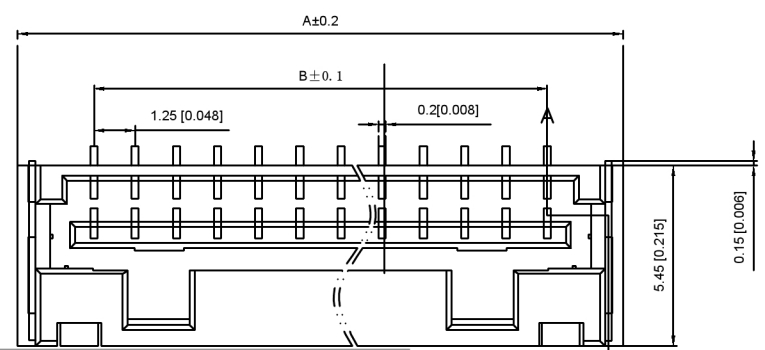
DSND		DATE		SCALE: N/A	MODEL TYPE: Wire to board connector
DWN		DATE		VIEW:	PART NO.:
CHKD		DATE		UNIT: mm/in	1.25mm Crimp Style Connectors
APPD		DATE		SIZE: A4	DWG NO.:
					X1254WVS-XX-LPSW
XKB INDUSTRIAL PRECISION CO., LIMITED				WEIGHT	SHEET
				1/1	REVISION
					A0



Specifications:
 规格:
 Voltage rating:50V AC/DC
 额定电压: 50V AC/DC
 Current rating:1A AC/DC
 额定电流: 1A AC/DC
 Contact Resistance:≤20MΩ
 接触电阻: ≤20MΩ
 Insulation Resistance:≥100MΩ
 绝缘电阻:≥100MΩ
 Dielectric strength:250V AC/minute
 耐压: 250V AC/minute
 Plug-in force: ≤3N (per pin)
 插入力: ≤3N (per pin)
 Plug-out force:≥0.3N (per pin)

X1254 WVS -XX-LP SW
 ① ② ③ ④ ⑤ ⑥ ⑦

- ① Series No
- ② Category:W-WAFER
- ③ Welding Board Angle:V-90°
- ④ Welding Wway:S-SMT
- ⑤ Row No-Pin No:XX-02-07PIN
- ⑥ Material:LCP-LCP 94V-0
- ⑦ Plating Category:SW-Matte Tin Plating(Tin:70u Min)



Circuits	Dinansin mm		Circuits	Dinansin mm	
	A	B		A	B
8	13.35	8.75	12	18.35	13.75
9	14.60	10.00	13	19.6	15.00
10	15.85	11.25	14	20.85	16.25
11	17.10	12.50	15	22.10	17.50

X1254WVS-XX-LPSW	PA9T UL 94V-0	Tin-Plated	Tin-Plated	X1254W
	LCP UL 94V-0	Brass	Phosphor Brass	
PART NO	Material	Material(pin)	Finish(Pin)	Suitable XKB Terminal

广东星坤科技股份有限公司

生 日期

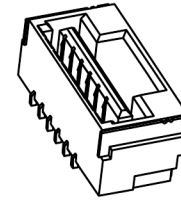
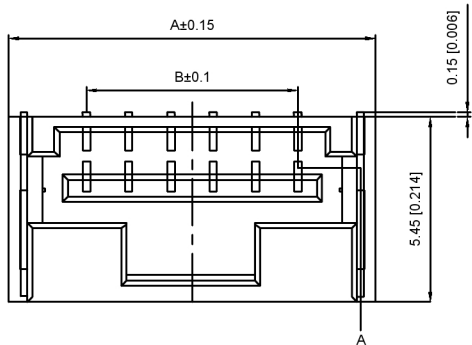
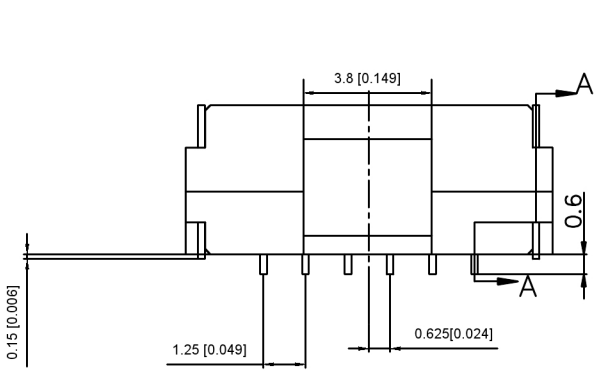
效 日期

MARK 文件工程章 DESCRIPTION

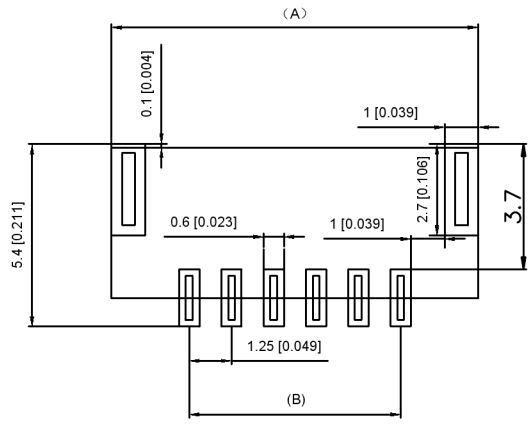
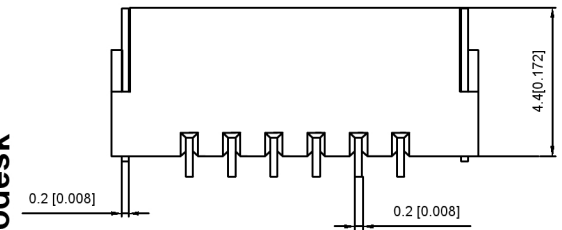
REVISIONS	DATE	REVISED	APPROVED	UNSPECIFIED TOLERANCES

units: mm
 tolerance:
 X.X ±0.2mm
 X.XX ±0.1mm
 X.XXX ±0.05mm

DSND	DATE	SCALE: N/A	MODEL TYPE: Wire to board connector
DWN	DATE	VIEW:	PART NO.:
CHKD	DATE	UNIT: mm/in	2.54mm Crimp Style Connectors
APPD	DATE	SIZE: A4	DWG NO.:
XKB INDUSTRIAL PRECISION CO.,LIMITED			X1254WVS-XX-LPSW
WEIGHT	SHEET	REVISION	
	1/1	A0	



Specifications:
 规格:
 Voltage rating:50V AC/DC
 额定电压: 50V AC/DC
 Current rating:1A AC/DC
 额定电流: 1A AC/DC
 Contact Resistance:≤20MΩ
 接触电阻: ≤20MΩ
 Insulation Resistance:≥100MΩ
 绝缘电阻:≥100MΩ
 Dielectric strength:250V AC/minute
 耐压: 250V AC/minute
 Plug-in force: ≤3N(per pin)
 插入力: ≤3N (per pin)
 Plug-out force:≥0.3N (per pin)

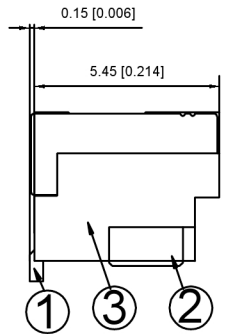
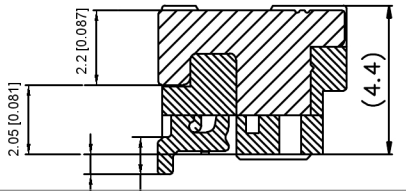


PCB LAYOUT

X1254W R S -XX-LP SW

- ①
- ②
- ③
- ④
- ⑤
- ⑥
- ⑦

- ⊙ Series No
- ⊙ Category:W-WAFER
- ⊙ Welding Board Angle:R-90°
- ⊙ Welding Way:S-SMT
- ⊙ Row No-Pin No:XX-02-07PIN
- ⊙ Material:LP-LCP 94V-0
- ⊙ Plating Category:SW-Matte Tin Plating(Tin:70u Min)



Circuits	Dinansin mm		Circuits	Dinansin mm	
	A	B		A	B
2	5.58	5.6	6	10.85	6.25
3	7.10	6.85	7	12.10	7.5
4	8.35	8.10			
5	9.6	9.35			

X1254WRS-XX-LPSW	LCP UL 94V-0	Brass	Tin -Pated	X1254W
PART NO	Material	Material(pin)	Finish(Pin)	Suitable XKB Terminal

广东墨神科技股份有限公司

生 效 日期

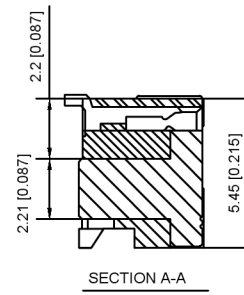
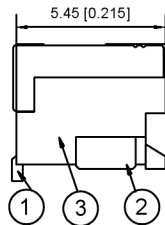
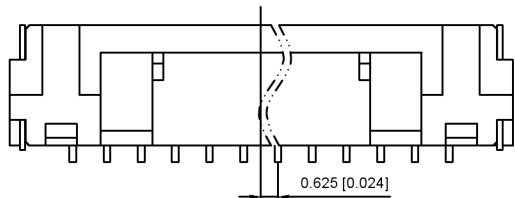
文件工程章

DESCRIPTION

REVISIONS	DATE	REVISED	APPROVED	UNSPECIFIED TOLERANCES

units: mm
 tolerance:
 X.X ±0.2mm
 X.XX ±0.1mm
 X.XXX ±0.05mm

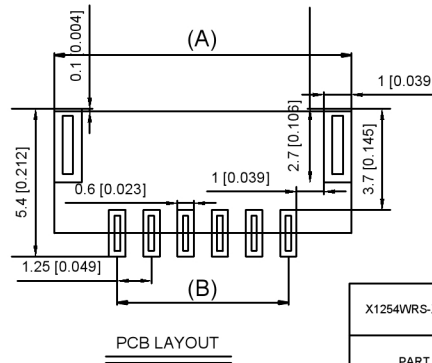
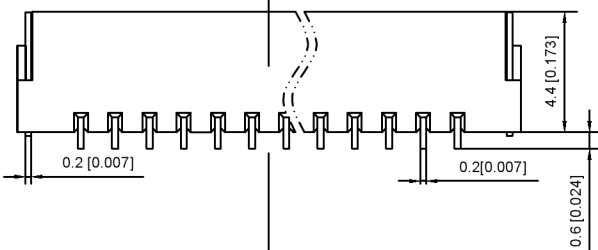
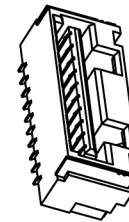
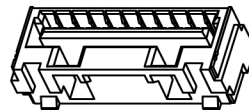
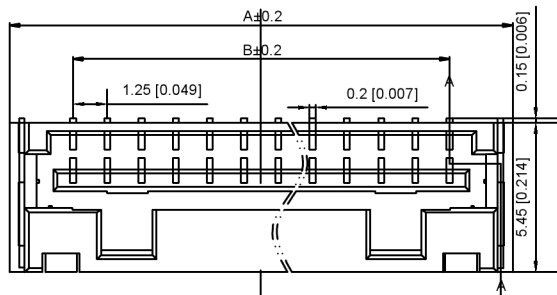
DSND		DATE		SCALE: N/A	MODEL TYPE: Wire to board connector
DWN		DATE		VIEW:	PART NO.: 1.25mm Crimp Style Connectors
CHKD		DATE		UNIT: mm/in	DWG NO.: X1254WRS-XX-LPSW
APPD		DATE		SIZE: A4	
XKB INDUSTRIAL PRECISION CO.,LIMITED				WEIGHT	SHEET 1/1
				REVISION	A0



Specifications:
 规格:
 Voltage rating:50V AC/DC
 额定电压: 50V AC/DC
 Current rating:1A AC/DC
 额定电流: 1A AC/DC
 Contact Resistance:≤20MΩ
 接触电阻: ≤20MΩ
 Insulation Resistance:≥100MΩ
 绝缘电阻:≥100MΩ
 Dielectric strength:250V AC/minute
 耐压: 250V AC/minute
 Plug-in force: ≤3N(per pin)
 插入力: ≤3N (per pin)
 Plug-out force:≥0.3N (per pin)
 拔出力: ≥0.3N (per pin)
 Finish: TIN Bronze, Tin plated
 Brass, Tin plated

X1254W R S -XX-LP SW
 ① ② ③ ④ ⑤ ⑥ ⑦

- ① Series No
- ② Category:W-WAFER
- ③ Welding Board Angle:R-90°
- ④ Welding Way: S-SMT
- ⑤ Row No-Pin No:XX-02-07PIN
- ⑥ Material:LP-LCP 94V-0
- ⑦ Plating Category:SW-Matte Tin Plating(Tin:70u Min)



Circuits	Dinansin mm		Circuits	Dinansin mm	
	A	B		A	B
8	13.35	8.75	12	18.35	13.75
9	14.60	10.00	13	19.60	15.00
10	15.85	11.25	14	20.85	16.25
11	17.10	12.50	15	22.10	17.50

X1254WRS-XX-LPSW	LCP UL 94V-0	Tin-Plated	Tin-Plated	X1254H
PART NO	Material	Material(pin)	Finish(Pin)	Suitable XK8 Terminal

广东星坤科技股份有限公司

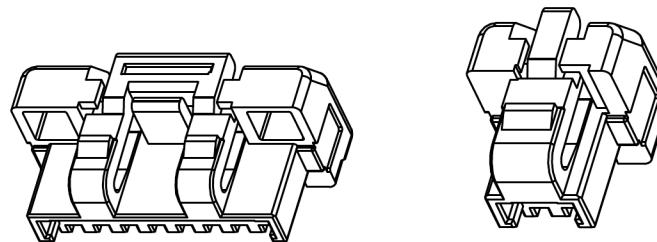
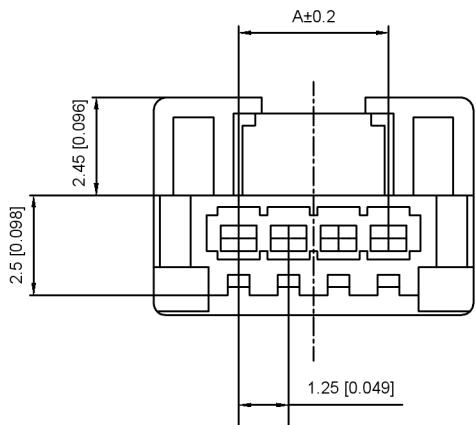
生效 MARK 日期

文件工程章

DESCRIPTION	DATE	REVISED	APPROVED	UNSPECIFIED TOLERANCES

www.xk-dg.cn www.helloxkb.com www.helloxkb.cn

DSND		DATE		SCALE: N/A	MODEL TYPE: Wire to board connector
DWN		DATE		VIEW:	PART NO.: 1.25mm Crimp Style Connectors
CHKD		DATE		UNIT: mm/in	DWG NO.: X1254WRS-XX-LPSW
APPD		DATE		SIZE: A4	WEIGHT SHEET REVISION 1/1 A0
XKB INDUSTRIAL PRECISION CO., LIMITED					

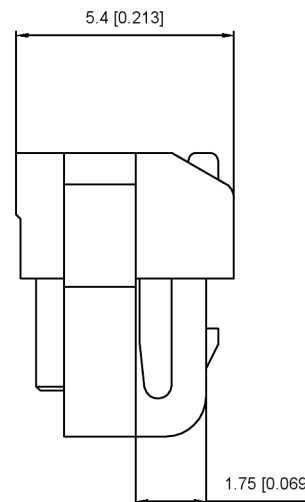
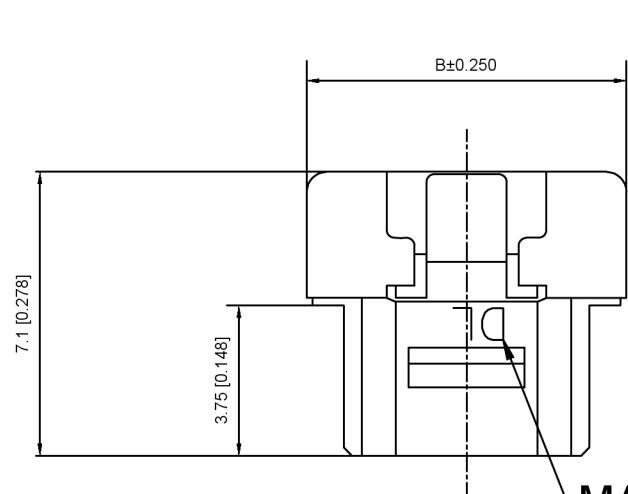


Specifications:

规格:
 Voltage rating:50V AC/DC
 额定电压: 50V AC/DC
 Current rating:1A AC/DC
 额定电流: 1A AC/DC
 Contact Resistance:≤20MΩ
 接触电阻: ≤20MΩ
 Insulation Resistance:≥100MΩ
 绝缘电阻:≥100MΩ
 Dielectric strength:250V AC/minute
 耐压: 250V AC/minute
 Plug-in force: ≤3N(per pin)
 插入力: ≤3N (per pin)
 Plug-out force:≥0.3N (per pin)

X1254 H-XX-N0
 ① ② ③ ④

- ① Series No
- ② Category:H-HSG
- ③ Row No:-Pin XX-02P-15P
- ④ Material:N0-PA66 94V-0



Circuit s	Dinansin mm		Circuit s	Dinansin mm	
	A	B		A	B
2	1.25	5.6	10	11.25	15.60
3	2.50	6.85	11	12.50	16.85
4	3.75	8.10	12	13.75	18.10
5	5.00	9.35	13	15.00	19.35
6	6.25	10.60	14	16.25	20.60
7	7.50	11.85	15	17.50	21.85
8	8.75	13.10	—	—	—
9	10.00	14.35	—	—	—

X1254H-XX-N0	PA66 UL 94V-0	X1254W	Tin-Plated	X1254H
PART NO	Material	Material(pin)	Finish(Pin)	Suitable XKB Terminal

广东星坤科技股份有限公司

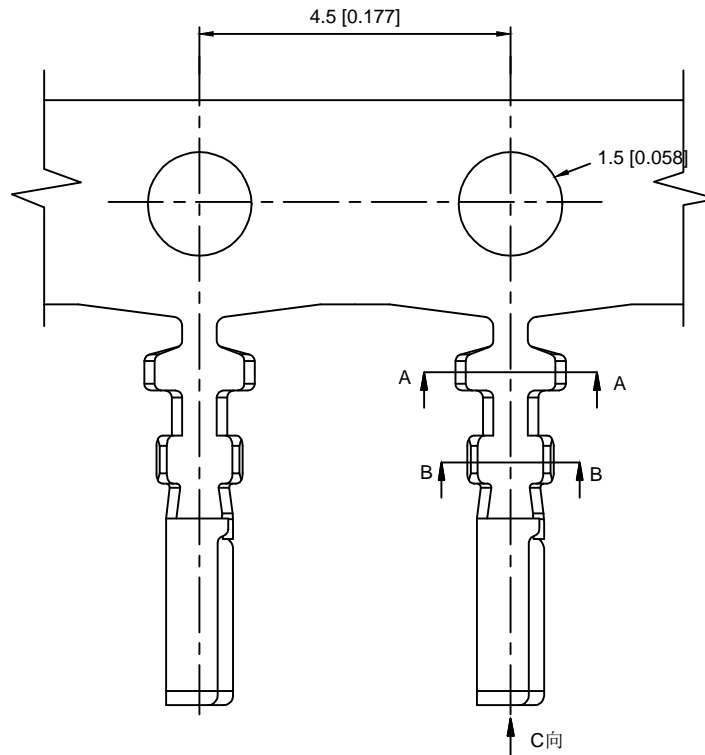
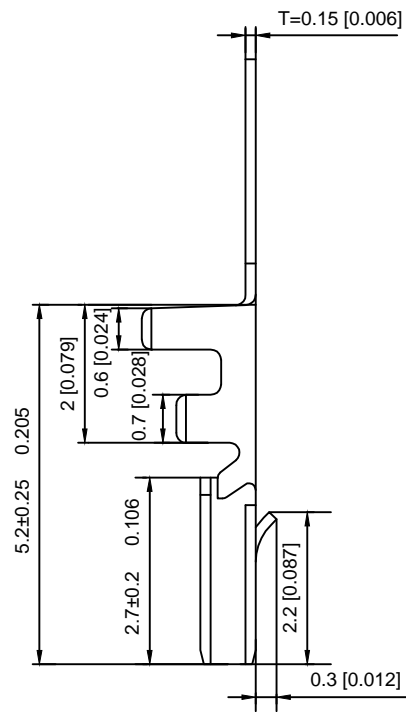
生数 日期

文件工程章

REVISIONS

UNSPECIFIED TOLERANCES

DSND		DATE		SCALE: N/A	MODEL TYPE: Wire to board connector
DWN		DATE		VIEW:	PART NO.:
CHKD		DATE		UNIT: mm/in	1.25mm Crimp Style Connectors
APPD		DATE		SIZE: A4	DWG NO.:
XKB INDUSTRIAL PRECISION CO., LIMITED					WEIGHT
					SHEET
					REVISION
					1/1
					A0



Specifications:

规格:

Voltage rating:50V AC/DC

额定电压: 50V AC/DC

Current rating:1A AC/DC

额定电流: 1A AC/DC

Contact Resistance:≤20M

接触电阻: ≤20M

Ins lation Resistance: 100M

绝缘电阻: 100M

Dielectric strength:250V AC/minutenai

耐压: 250V AC/minute

Cycles:12000

寿命;12000

X1254T - P XX

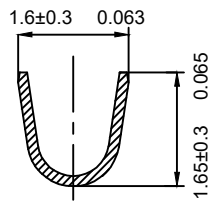
① ② ③

① Series No.

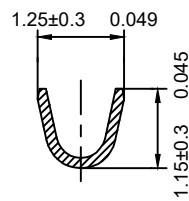
② Material.: P-Phosphor bronze;

③ Plating Style:

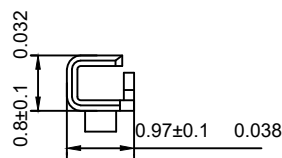
V01-All Gold Flash SN-Bright Tin Plating



SECTION A-A



SECTION B-B



SECTION C-C

X1254-PV01	Phoshor Bronze	AWG#28-32	1.0mm(MAX)	Stamping Pating 30u"Ni Whole Gold Flash	X1254H
X1254-PSN	Material	Wire Range	Insulation O.D	Stamping Before Pating:30u" Ni 70U"Sn Min	
PART NO					Finish

MARK	DESCRIPTION	DATE	REVISED	APPROVED	UNSPECIFIED TOLERANCES
ΔX					ANGLAR ±5°
ΔX					L ≤ 4 ±0.2
ΔX					4 < L ≤ 16 ±0.3
					16 < L ≤ 63 ±0.4
					L > 63 ±0.5

DSND	SCALE: N/A	MODEL TYPE: SLIDE SWITCH
DWN	VIEW:	PART NO.:
CHKD	UNIT: mm/in	DWG NO.:
APPD	SIZE: A4	X10C225XXX
XKB INDUSTRIAL PRECISION CO., LIMITED		WEIGHT
		SHEET
		REVISION
		1/1
		A0

X-ON Electronics

Largest Supplier of Electrical and Electronic Components

Click to view similar products for [Terminals](#) category:

Click to view products by [XKB](#) manufacturer:

Other Similar products are found below :

[00-054007-01074-6](#) [00-054007-70206-1](#) [00-054007-70210-8](#) [00-054007-70217-7](#) [00-054007-70228-3](#) [00-054007-70256-6](#) [00-054007-70316-7](#) [00-054007-49560-4](#) [00-054007-70209-2](#) [00-054007-70231-3](#) [00-054007-70241-2](#) [00-054007-70242-9](#) [00-054007-70246-7](#) [00-054007-70263-4](#) [00-054007-70288-7](#) [00-054007-70290-0](#) [00-054007-70300-6](#) [00-054007-70304-4](#) [01-2900-1-04412](#) [00581P0075](#) [600TS-10](#) [604200-1](#) [605601-1](#) [60598-1-CUT-TAPE](#) [60617-1-C](#) [61314-6-C](#) [61810-3](#) [62149-1](#) [626-0194](#) [62-NBM-A](#) [62-SP](#) [63-S](#) [M55155/059I03](#)
[M55155/079C01](#) [M55155/099B03](#) [M55155/099H02](#) [M55155/109H01](#) [M55155/12XH05](#) [M55155/16XH02](#) [M55155/29-5S](#) [M55155/29XJ08](#)
[M55155/30-6S](#) [M55155/30-9S](#) [M55155/30XI09](#) [696683-1](#) [696861-1](#) [696999-1](#) [M86700006](#) [D18-110B-C](#) [D18-110B-M](#)