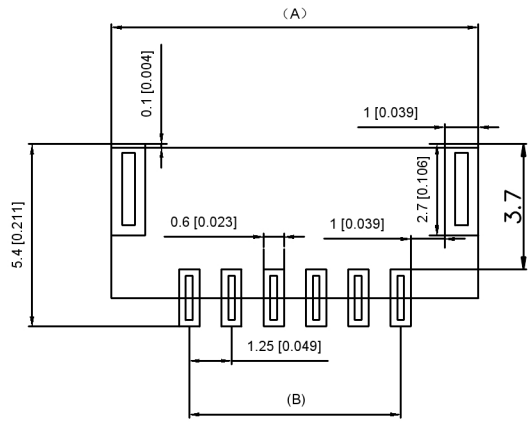
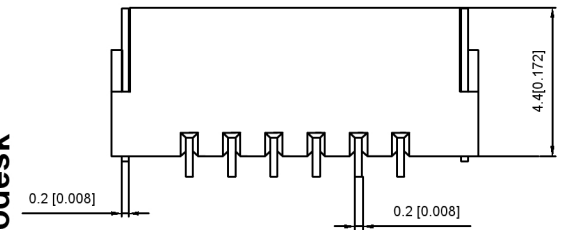


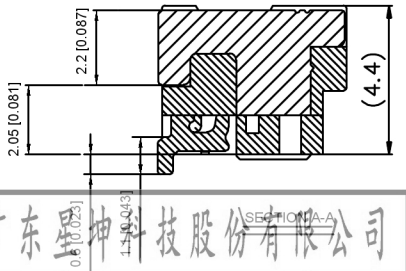
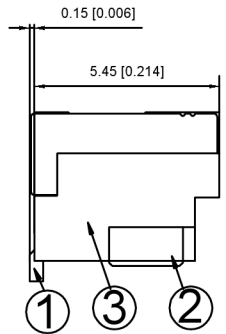
Specifications:  
 规格:  
 Voltage rating:50V AC/DC  
 额定电压: 50V AC/DC  
 Current rating:1A AC/DC  
 额定电流: 1A AC/DC  
 Contact Resistance:≤20MΩ  
 接触电阻: ≤20MΩ  
 Insulation Resistance:≥100MΩ  
 绝缘电阻:≥100MΩ  
 Dielectric strength:250V AC/minute  
 耐压: 250V AC/minute  
 Plug-in force: ≤3N(per pin)  
 插入力: ≤3N (per pin)  
 Plug-out force:≥0.3N (per pin)



PCB LAYOUT

X1254W R S -XX-LP SW  
 ① ② ③ ④ ⑤ ⑥ ⑦

- ⊙ Series No
- ⊙ Category:W-WAFER
- ⊙ Welding Board Angle:R-90°
- ⊙ Welding Way:S-SMT
- ⊙ Row No-Pin No:XX-02-07PIN
- ⊙ Material:LP-LCP 94V-0
- ⊙ Plating Category:SW-Matte Tin Plating(Tin:70u Min)



Circuits	Dinansin mm		Circuits	Dinansin mm	
	A	B		A	B
2	5.58	5.6	6	10.85	6.25
3	7.10	6.85	7	12.10	7.5
4	8.35	8.10			
5	9.6	9.35			

X1254WRS-XX-LPSW	LCP UL 94V-0	Brass	Tin -Pated	X1254W
PART NO	Material	Material(pin)	Finish(Pin)	Suitable XKB Terminal

广东墨神科技股份有限公司

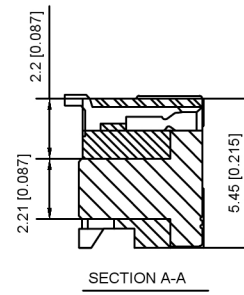
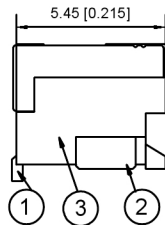
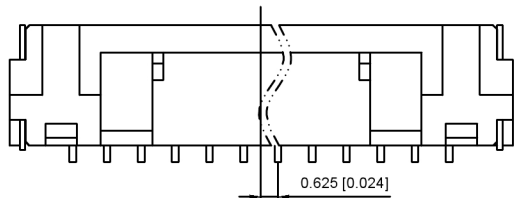
生 效 日期

文件工程章

DESCRIPTION

DSND		DATE		SCALE: N/A	MODEL TYPE: Wire to board connector
DWN		DATE		VIEW:	PART NO.: 1.25mm Crimp Style Connectors
CHKD		DATE		UNIT: mm/in	DWG NO.: X1254WRS-XX-LPSW
APPD		DATE		SIZE: A4	
XKB INDUSTRIAL PRECISION CO.,LIMITED				WEIGHT	SHEET
				1/1	REVISION
					A0

					units: mm
					tolerance:
					X.X ±0.2mm
					X.XX ±0.1mm
					X.XXX ±0.05mm
					UNSPECIFIED TOLERANCES
	REVISIONS	DATE	REVISED	APPROVED	
	www.xk-dg.cn	www.helloxkb.com	www.helloxkb.cn		

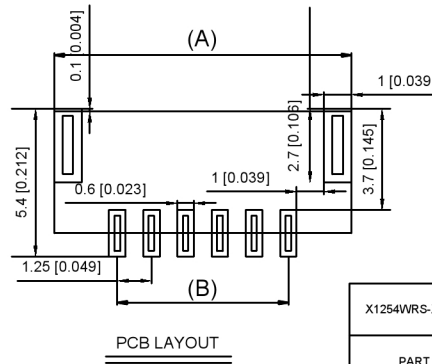
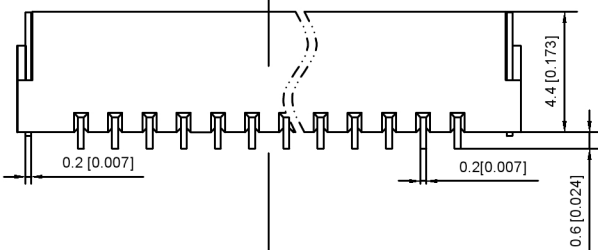
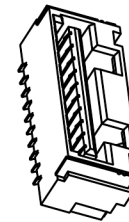
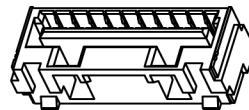
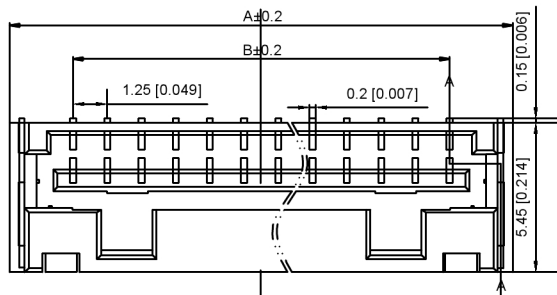


Specifications:

规格:  
 Voltage rating:50V AC/DC  
 额定电压: 50V AC/DC  
 Current rating:1A AC/DC  
 额定电流: 1A AC/DC  
 Contact Resistance:≤20MΩ  
 接触电阻: ≤20MΩ  
 Insulation Resistance:≥100MΩ  
 绝缘电阻:≥100MΩ  
 Dielectric strength:250V AC/minute  
 耐压: 250V AC/minute  
 Plug-in force: ≤3N(per pin)  
 插入力: ≤3N (per pin)  
 Plug-out force:≥0.3N (per pin)  
 拔出力: ≥0.3N (per pin)  
 Finish: TIN Bronze, Tin plated  
 Brass, Tin plated

X1254W R S -XX-LP SW

- ① Series No
- ② Category:W-WAFER
- ③ Welding Board Angle:R-90°
- ④ Welding Way: S-SMT
- ⑤ Row No-Pin No:XX-02-07PIN
- ⑥ Material:LP-LCP 94V-0
- ⑦ Plating Category:SW-Matte Tin Plating(Tin:70u Min)



Circuits	Dinansin mm		Circuits	Dinansin mm	
	A	B		A	B
8	13.35	8.75	12	18.35	13.75
9	14.60	10.00	13	19.60	15.00
10	15.85	11.25	14	20.85	16.25
11	17.10	12.50	15	22.10	17.50

X1254WRS-XX-LPSW	LCP UL 94V-0	Tin-Plated	Tin-Plated	X1254H
PART NO	Material	Material(pin)	Finish(Pin)	Suitable XKB Terminal

广东星坤科技股份有限公司

生效 MARK 日期

文件工程章

DESCRIPTION	DATE	REVISED	APPROVED	UNSPECIFIED TOLERANCES

www.xk-dg.cn www.helloxkb.com www.helloxkb.cn

DSND		DATE		SCALE: N/A	MODEL TYPE: Wire to board connector
DWN		DATE		VIEW:	PART NO.: 1.25mm Crimp Style Connectors
CHKD		DATE		UNIT: mm/in	DWG NO.: X1254WRS-XX-LPSW
APPD		DATE		SIZE: A4	
XKB INDUSTRIAL PRECISION CO., LIMITED				WEIGHT	SHEET
					REVISION
				1/1	A0

## X-ON Electronics

Largest Supplier of Electrical and Electronic Components

*Click to view similar products for [Headers & Wire Housings](#) category:*

*Click to view products by [XKB](#) manufacturer:*

Other Similar products are found below :

[57102-F02-18ULF](#) [58102-G61-06LF](#) [0009485154](#) [009176003701906](#) [0050291907](#) [00-9021-0611-00-339](#) [02.125.8002.8](#) [609-3404](#) [61062-3](#)  
[622-0430](#) [622-3653LF](#) [63453-116](#) [636-1030](#) [636-1427](#) [636-3427](#) [636-4007](#) [641938-9](#) [644827-2](#) [65495-038](#) [65692-001LF](#) [65781-018](#)  
[65781-047](#) [65817-010LF](#) [65817-015LF](#) [66207-023LF](#) [67016-026LF](#) [67095-007LF](#) [68631-112](#) [68645-018](#) [68648-049](#) [699319-000](#)  
[70.362.1628.0](#) [70-4210](#) [70-4226B](#) [70-4853B](#) [707-5020](#) [707-5028](#) [71.350.2428.0](#) [71961-016LF](#) [733-134](#) [754199-000](#) [760-3052](#) [787-8014-00](#)  
[FCN-367T-T012/H](#) [80.063.4001.1](#) [800-90-001-10-001000](#) [800-90-010-10-002000](#) [801-43-002-10-013000](#) [801-43-006-10-002000](#)  
[803-41-018-10-001000](#)