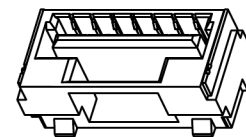
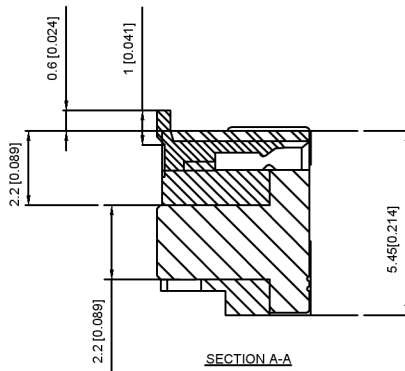
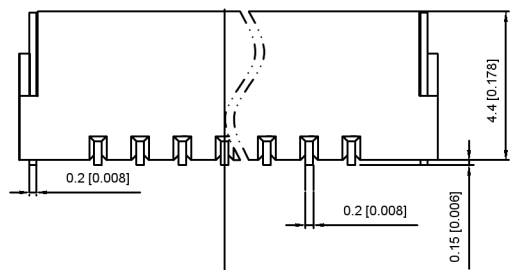


PCB LAYOUT

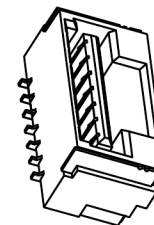


Specifications:

- 规格:  
 Voltage rating: 50V AC/DC  
 额定电压: 50V AC/DC  
 Current rating: 1A AC/DC  
 额定电流: 1A AC/DC  
 Contact Resistance: ≤20MΩ  
 接触电阻: ≤20MΩ  
 Insulation Resistance: ≥100MΩ  
 绝缘电阻: ≥100MΩ  
 Dielectric strength: 250V AC/minute  
 耐压: 250V AC/minute  
 Plug-in force: ≤3N (per pin)  
 插入力: ≤3N (per pin)  
 Plug-out force: ≥0.3N (per pin)



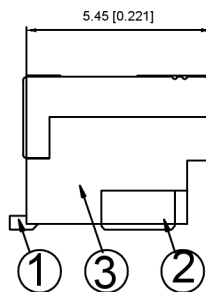
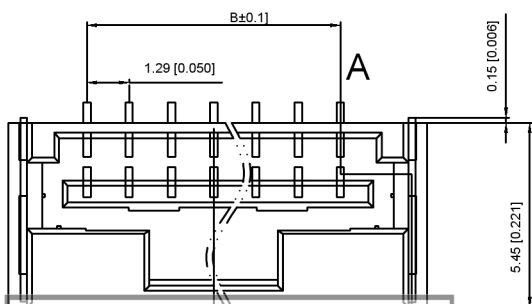
SECTION A-A



X1254W V S-XX-LP SW  
 ① ② ③ ④ ⑤ ⑥ ⑦

- ① Series No
- ② Category: W-WAFER
- ③ Welding Board Angle: V-90°
- ④ Welding Way: S-SMT
- ⑤ Row No-Pin No: XX-02-07PIN
- ⑥ Material: LP-LCP 94V-0
- ⑦ Plating Category: SW-Matte Tin Plating (Tin: 70u Min)

Circuits	Dinansin mm		Circuits	Dinansin mm	
	A	B		A	B
2	5.58	1.25	6	10.85	6.25
3	7.10	2.50	7	12.10	7.50
4	8.35	3.75			
5	9.60	5.00			



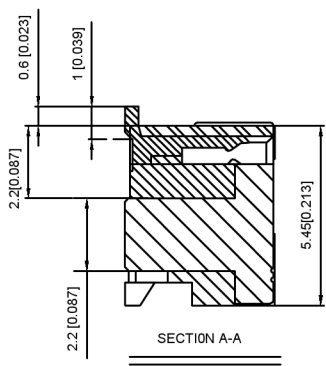
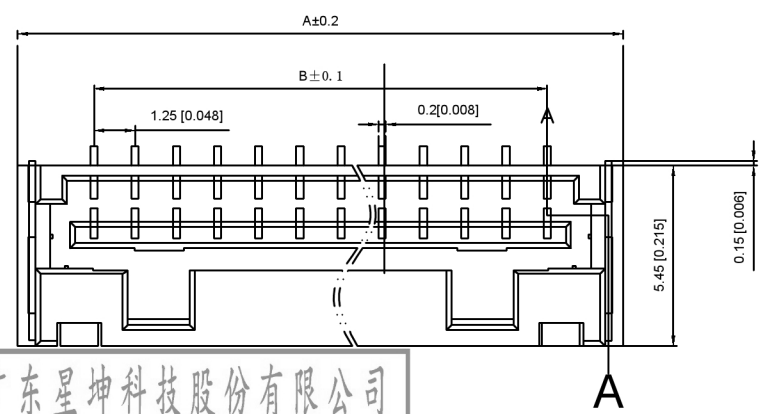
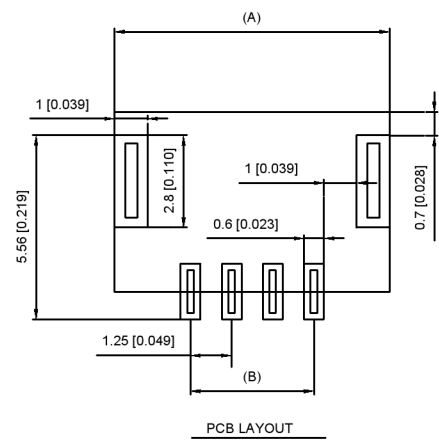
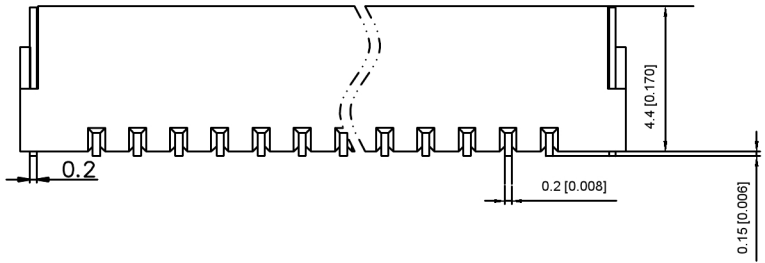
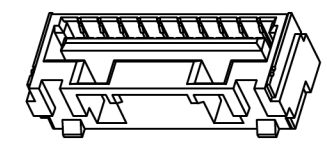
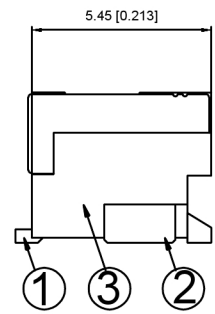
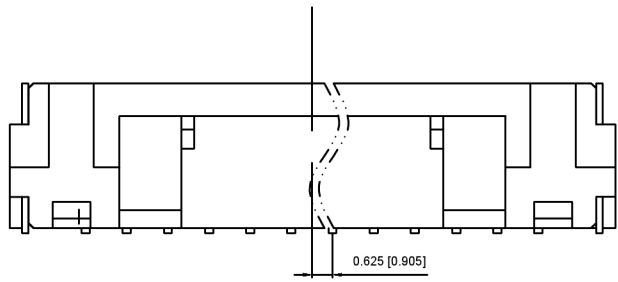
X1254WVS-XX-LPSW	PA9T UL 94V-0	Tin-Plated	Tin-Plated	X1254W
PART NO	Material	Material (pin)	Finish (Pin)	Suitable XKB Terminal

广东星坤科技股份有限公司

生效 日期

文件工程章

DSND		DATE		SCALE: N/A	MODEL TYPE: Wire to board connector
DWN		DATE		VIEW:	PART NO.:
CHKD		DATE		UNIT: mm/in	1.25mm Crimp Style Connectors
APPD		DATE		SIZE: A4	DWG NO.:
XKB INDUSTRIAL PRECISION CO., LIMITED					X1254WVS-XX-LPSW
REVISIONS			WEIGHT	SHEET	REVISION
UNSPECIFIED TOLERANCES				1/1	A0



Specifications:  
 规格:  
 Voltage rating:50V AC/DC  
 额定电压: 50V AC/DC  
 Current rating:1A AC/DC  
 额定电流: 1A AC/DC  
 Contact Resistance:≤20MΩ  
 接触电阻: ≤20MΩ  
 Insulation Resistance:≥100MΩ  
 绝缘电阻: ≥100MΩ  
 Dielectric strength:250V AC/minute  
 耐压: 250V AC/minute  
 Plug-in force: ≤3N (per pin)  
 插入力: ≤3N ( per pin)  
 Plug-out force:≥0.3N ( per pin)

X1254 WVS -XX-LP SW  
 ① ② ③ ④ ⑤ ⑥ ⑦

- ① Series No
- ② Category:W-WAFER
- ③ Welding Board Angle:V-90°
- ④ Welding Wway:S-SMT
- ⑤ Row No-Pin No:XX-02-07PIN
- ⑥ Material:LCP-LCP 94V-0
- ⑦ Plating Category:SW-Matte Tin Plating(Tin:70u Min)

Circuits	Dinansin mm		Circuits	Dinansin mm	
	A	B		A	B
8	13.35	8.75	12	18.35	13.75
9	14.60	10.00	13	19.6	15.00
10	15.85	11.25	14	20.85	16.25
11	17.10	12.50	15	22.10	17.50

X1254WVS-XX-LPSW	PA9T UL 94V-0	Tin-Plated	Tin-Plated	X1254W
	LCP UL 94V-0	Brass	Phosphor Brass	
PART NO	Material	Material(pin)	Finish(Pin)	Suitable XKB Terminal

DSND	DATE	SCALE: N/A	MODEL TYPE: Wire to board connector
DWN	DATE	VIEW:	PART NO.:
CHKD	DATE	UNIT: mm/in	2.54mm Crimp Style Connectors
APPD	DATE	SIZE: A4	DWG NO.:
XKB INDUSTRIAL PRECISION CO.,LIMITED			X1254WVS-XX-LPSW
WEIGHT	SHEET	REVISION	
	1/1	A0	

广东星坤科技股份有限公司

生	日期
效	日期
MARK	DESCRIPTION
文件	工程章

REVISIONS

DATE REVISED APPROVED

UNSPECIFIED TOLERANCES

www.xk-cg.cn www.helloxkb.com www.helloxkb.cn

## X-ON Electronics

Largest Supplier of Electrical and Electronic Components

*Click to view similar products for [Headers & Wire Housings](#) category:*

*Click to view products by [XKB](#) manufacturer:*

Other Similar products are found below :

[57102-F02-18ULF](#) [58102-G61-06LF](#) [0009485154](#) [009176003701906](#) [0050291907](#) [00-9021-0611-00-339](#) [02.125.8002.8](#) [609-3404](#) [61062-3](#)  
[622-0430](#) [622-3653LF](#) [63453-116](#) [636-1030](#) [636-1427](#) [636-3427](#) [636-4007](#) [641938-9](#) [644827-2](#) [65495-038](#) [65692-001LF](#) [65781-018](#)  
[65781-047](#) [65817-010LF](#) [65817-015LF](#) [66207-023LF](#) [67016-026LF](#) [67095-007LF](#) [68631-112](#) [68645-018](#) [68648-049](#) [699319-000](#)  
[70.362.1628.0](#) [70-4210](#) [70-4226B](#) [70-4853B](#) [707-5020](#) [707-5028](#) [71.350.2428.0](#) [71961-016LF](#) [733-134](#) [754199-000](#) [760-3052](#) [787-8014-00](#)  
[FCN-367T-T012/H](#) [80.063.4001.1](#) [800-90-001-10-001000](#) [800-90-010-10-002000](#) [801-43-002-10-013000](#) [801-43-006-10-002000](#)  
[803-41-018-10-001000](#)