

**MATERIAL 材料:**

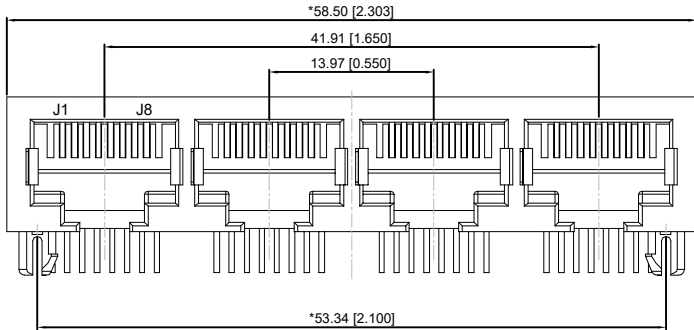
HOUSING 外壳: PBT,UL94V-0,BLACK.  
 TERMINAL 端子: PHOSPHOR BRONZE , $\varnothing=0.46\text{MM}$ ,  
 GOLD PLATING ON CONTACT AREA.

**MECHANICAL 机械:**

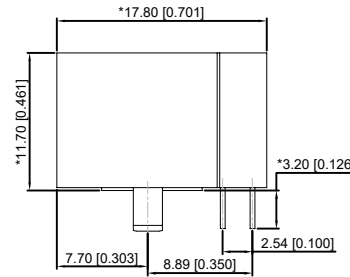
DURABILITY 耐用性: 750 CYCLES MIN.12.5MM/MINUTE  
 INSERTION FORCE 插入力: 2.2KG.F MAX  
 RETENTION STRENGTH 固位力:7.7KG.F BETWEEN JACK AND PLUG  
 OPERATING TEMPERATURE 工作温度:  $-40^{\circ}\text{C}\sim+85^{\circ}\text{C}$ .  
 STORAGE TEMPERATURE 储存温度:  $-40^{\circ}\text{C}\sim+85^{\circ}\text{C}$ .  
 ALL CRITICAL DIMENSIONS WITH ""

**ELECTRICAL 电动:**

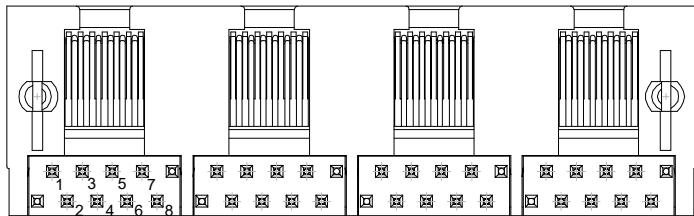
VOLTAGE 电压:125 VOLTS AC  
 CURRENT RATING 额定电流:1.5AMP  
 DIELECTRIC STRENGTH 介电强度:1000 VAC RMS 50HZ OR 60HZ,1MIN  
 INSULATION RESISTANCE 绝缘电阻:500 MEGA OHMS MIN.INITIAL  
 AFTER 500V DC FOR 1 MINUTE  
 CONTACT RESISTANCE 接触电阻:SINGLE TERMINAL 30 MILLIOHMS MAX  
 INITIAL 50 MILLIOHMS MAX.AFTER  
 DURABILITY TEST



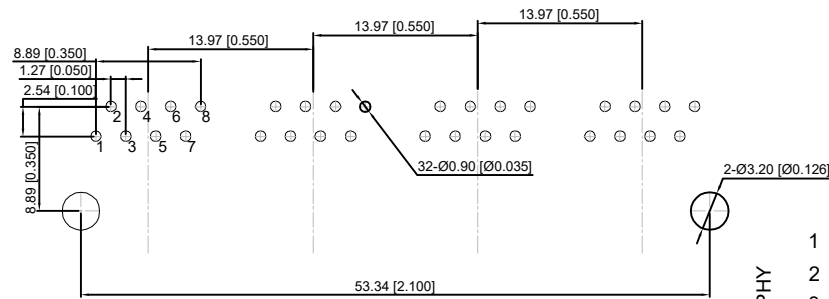
FRONT VIEW



RIGHT SIDE VIEW

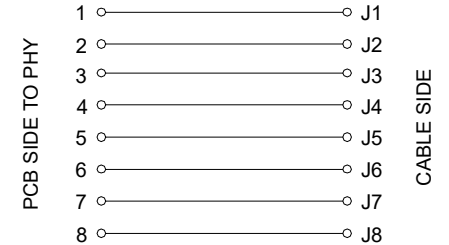


BOTTOM VIEW



RECOMMENDED PCB LAYOUT  
 VIEWED FROM COMPONENT SIDE

XKB Connectivity



MARK	DESCRIPTION	DATE	REVISED	APPROVED	UNSPECIFIED TOLERANCES
$\Delta X$					ANGULAR $\pm 5^{\circ}$
$\Delta X$					$L \leq 4$ $\pm 0.2$
$\Delta X$					$4 < L \leq 16$ $\pm 0.3$
					$16 < L \leq 63$ $\pm 0.4$
					$L > 63$ $\pm 0.5$

DSND		DATE		SCALE: N/A	MODEL TYPE: RJ JACK	
DWN		DATE		VIEW:	PART NO.:	
CHKD		DATE		UNIT: mm/in	DWG NO.:	
APPD		DATE		SIZE: A4	X14CBIWB1DY1027	
				WEIGHT	SHEET	REVISION
XKB INDUSTRIAL PRECISION CO., LIMITED				1.0g	1/1	A0

## X-ON Electronics

Largest Supplier of Electrical and Electronic Components

*Click to view similar products for [Modular Connectors](#) / [Ethernet Connectors](#) category:*

*Click to view products by [XKB](#) manufacturer:*

Other Similar products are found below :

[8949-H88/06BLKA/SN](#) [74441-0010/BKN](#) [PHP-6P6C-5](#) [GAX-3-66](#) [GAX-8-62](#) [GDCX-PN-66](#) [GLX-A-44](#) [GLX-N-1010M-BLK](#) [GMX-SMT4-N-88](#) [GSGX-N-2-88](#) [GSGX-N-4-88](#) [GSX-NS2-88-3.05](#) [GSX-NS-88-3.68](#) [PT-108A-8C-UL](#) [PTS-J531-8CS-50UL](#) [A-2014-0-4](#)  
[GWLX-S9-88-YG](#) [DC-1021-8-WH-6](#) [1300530003](#) [1324640-4](#) [RJ11FTVC2G](#) [RJ11FTVC2N](#) [RJFTVX2SA1G](#) [132764-001](#) [1413235](#)  
[MPS88RX-5000](#) [E5288-S000K3-L](#) [155302-001](#) [AX101050](#) [AX101063](#) [AX101065](#) [AX101072](#) [AX101307](#) [AX101315](#) [AX101318](#)  
[AX102271](#) [AX102288](#) [AX102651](#) [AX102660](#) [J0012D21NL](#) [J0026D01ENL](#) [PC4D0018P](#) [8949-B88/6](#) [2-6609208-5](#) [937-SP-3088-2PC-A192](#)  
[303066VFL](#) [303068V](#) [303088LFLSA](#) [303088SBL](#) [30-8603](#)