

Specifications:

规格:

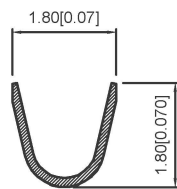
Voltage rating: 150V AC/DC
 额定电压: 150V AC/DC
 Current rating: 3A AC/DC
 额定电流: 3A AC/DC
 Withstanding voltage: 500V AC/minute
 耐受电压: 500V AC/分钟
 Temperature range: -25°C ~ +85°C
 温度范围: -25°C ~ +85°C
 Insulation resistance: ≥1000MΩ
 绝缘电阻: ≥1000MΩ

Contact resistance: ≤20mΩ
 接触电阻: ≤20mΩ
 After environmental testing: ≤40mΩ
 环境测试后: ≤40mΩ
 Wire Range: #24-28
 电线范围: #24-28
 Insulation OD: 1.10mm (Max)
 绝缘外径: 1.10mm (最大值)

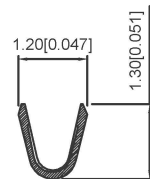
X1503 T- P XX

① ② ③ ④

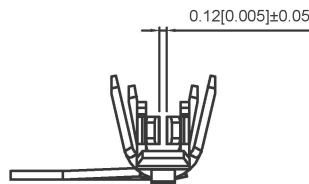
1. Series Number
2. Category: T-terminal
3. Material: P-Phosphor bronze
4. Plating Code: V01-Gold Flash
SN-Bright tin plating



SECTION: A-A
SCALE: 1:1



SECTION: B-B
SCALE: 1:1



X1503T-PV01	Phosphor Bronze	AWG#24-28	1.10mm(Max)	Stamping Before Plating: 30u"Ni MIN, Gold Flash	X1503H
X1503T-PSN				Stamping Before Plating: 30u"Ni MIN, 70u"Sn Min	
PART NO	Material	Wire Range	Insulation OD	Finish	Suitable: XKB

广东星坤科技股份有限公司

生	日期
效	日期
效	日期
效	日期
MARK	文件工程章

units:	mm
tolerance:	
X.X	±0.2mm
X.XX	±0.1mm
X.XXX	±0.05mm
UNSPECIFIED TOLERANCES	

DSND		DATE		SCALE: N/A	MODEL TYPE: Wire to board connector
DWN		DATE		VIEW:	PART NO.:
CHKD		DATE		UNIT: mm/in	1.50mm Crimp Style Connectors
APPD		DATE		SIZE: A4	DWG NO.: X1503T-PXXX
KKB INDUSTRIAL PRECISION CO., LIMITED				WEIGHT	SHEET
				1.0g	1/1
				REVISION	A0

X-ON Electronics

Largest Supplier of Electrical and Electronic Components

Click to view similar products for [Terminals](#) category:

Click to view products by [XKB](#) manufacturer:

Other Similar products are found below :

[00-054007-01074-6](#) [00-054007-70206-1](#) [00-054007-70210-8](#) [00-054007-70217-7](#) [00-054007-70228-3](#) [00-054007-70256-6](#) [00-054007-70316-7](#) [00-054007-49560-4](#) [00-054007-70209-2](#) [00-054007-70231-3](#) [00-054007-70241-2](#) [00-054007-70242-9](#) [00-054007-70246-7](#) [00-054007-70263-4](#) [00-054007-70288-7](#) [00-054007-70290-0](#) [00-054007-70300-6](#) [00-054007-70304-4](#) [01-2900-1-04412](#) [00581P0075](#) [600TS-10](#) [604200-1](#) [605601-1](#) [60598-1-CUT-TAPE](#) [60617-1-C](#) [61314-6-C](#) [61810-3](#) [62149-1](#) [626-0194](#) [62-NBM-A](#) [62-SP](#) [63-S](#) [M55155/059I03](#)
[M55155/079C01](#) [M55155/099B03](#) [M55155/099H02](#) [M55155/109H01](#) [M55155/12XH05](#) [M55155/16XH02](#) [M55155/29-5S](#) [M55155/29XJ08](#)
[M55155/30-6S](#) [M55155/30-9S](#) [M55155/30XI09](#) [696683-1](#) [696861-1](#) [696999-1](#) [M86700006](#) [D18-110B-C](#) [D18-110B-M](#)