

For and on behalf of
KKB INDUSTRIAL PRECISION CO., LIMITED
 香港星坤工業精密有限公司

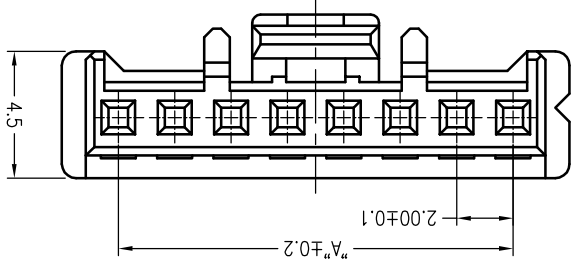
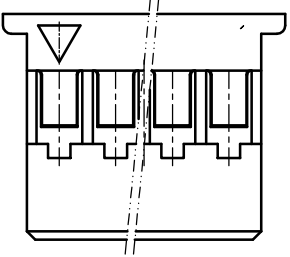
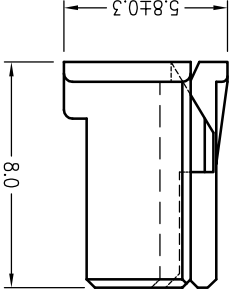
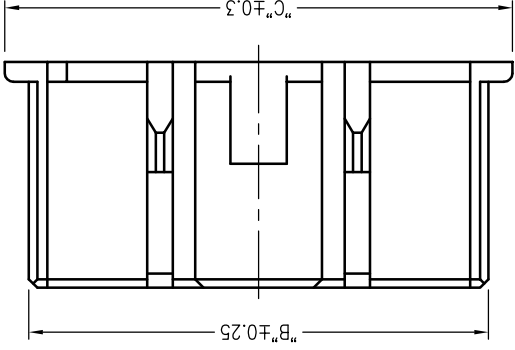
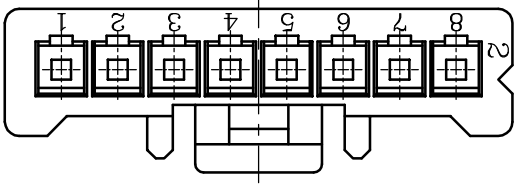
REVISIONS
 Authorized Signature(s)

MARK	DESCRIPTION	DATE	REVISED	APPROVED	UNSPECIFIED TOLERANCES
△ X					L > 63 ±0.5
△ X					16 < L ≤ 63 ±0.4
△ X					4 < L ≤ 16 ±0.3
△ X					L ≤ 4 ±0.2
					ANGULAR ±5°

REVISION	SHEET	WEIGHT	DATE	APPD	CHKD	DWN	DSND
A0	1/1	1.0g					
KKB INDUSTRIAL PRECISION CO., LIMITED			SIZE: A4				
			UNIT: mm				
			VIEW:				
			SCALE: N/A				
			MODEL TYPE: X2000H-XX-N0				
			PART NO.:				
			2.00mm Crimp Style Connector				
			DWG NO.:				

PART NO	Material	Suitable XKB Terminal	Suitable XKB Terminal
X2000H-XX-N0	PA66 UL 94V-0	X2000T	X2000W

Poles	Dimensions (mm)		
	A	B	C
02	2.00	4.34	6.10
03	4.00	6.34	8.10
04	6.00	8.34	10.10
05	8.00	10.34	12.10
06	10.00	12.34	14.10
07	12.00	14.34	16.10
08	14.00	16.34	18.10
09	16.00	18.34	20.10



X2000 H-XX-N0

- ① Series No.
 - ② Category: H-HSG
 - ③ Row No.-Pin No.: XX-02P~16P
 - ④ Material: N0-PA66 94V-0
- Specifications :
- Voltage rating: 250V AC / DC
 - Current rating: 3A AC / DC
 - Withstanding voltage: 800V AC/minute
 - Temperature range: -25°C~+85°C
 - Insulation resistance: ≥1000MΩ
 - Contact resistance: ≤10mΩ
 - After environmental testing: ≤20mΩ

X-ON Electronics

Largest Supplier of Electrical and Electronic Components

Click to view similar products for [Headers & Wire Housings](#) category:

Click to view products by [XKB](#) manufacturer:

Other Similar products are found below :

[95000-104TRLF](#) [10135584-644402LF](#) [DF62W-EP2022PCA](#) [95000-106TRLF](#) [DF62W-2022SCA](#) [DF62W-EP2022PC](#) [2203348](#) [DF62W-2022SC](#) [1084018](#) [1029039](#) [1084017](#) [802-10-012-10-002000](#) [1112640](#) [1112639](#) [891-007-9SS-BST1T](#) [000-34000](#) [0008550134](#) [0009482033](#) [0009507031](#) [57102-F02-18ULF](#) [57102-S06-03LF](#) [57202-S52-04LF](#) [PCN6-15S-2.5E](#) [0039019024](#) [58102-G61-06LF](#) [582553-1](#) [0009485154](#) [0009508121](#) [0022285053](#) [0050291907](#) [018731A](#) [LY20-4P-DT1-P1E-BR](#) [02.125.8002.8](#) [60101931](#) [60598-1 \(Cut Strip\)](#) [M1625-3R/100](#) [61062-3](#) [61082-181009](#) [CSU011177004](#) [636-1427](#) [638009-1](#) [641938-9](#) [641991-4](#) [644168-1](#) [644827-2](#) [647662-1](#) [65039-019ELF](#) [65692-001LF](#) [65781-018](#) [65781-047](#)