

REVISIONS (Unauthorized Signatures)

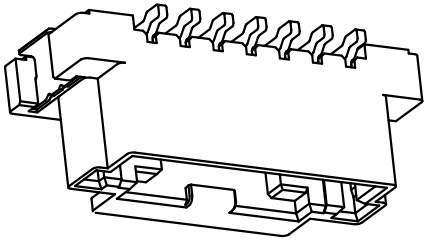
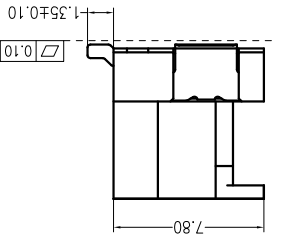
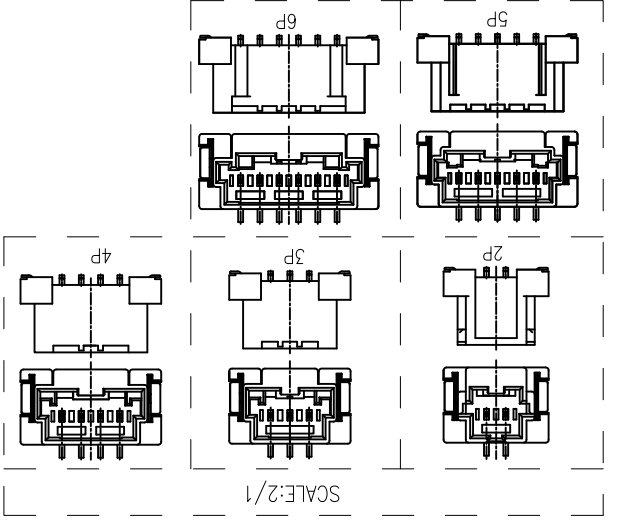
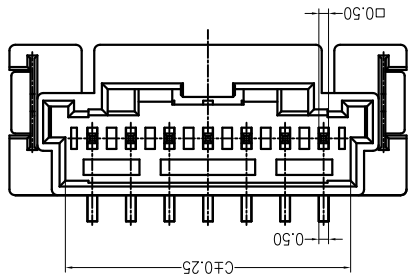
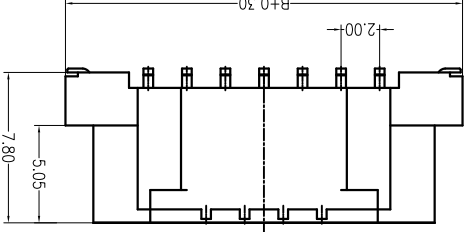
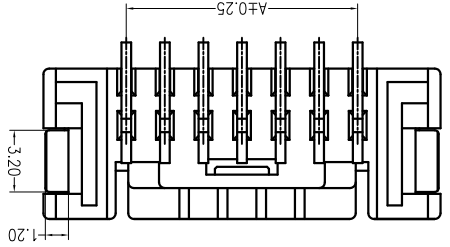
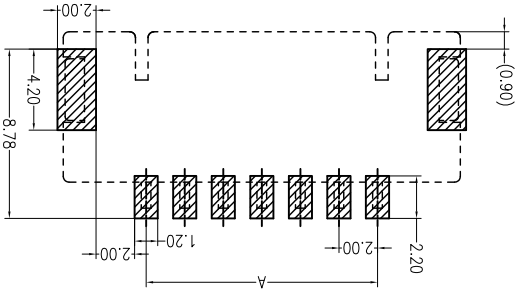
MARK	DESCRIPTION	DATE	REVISED	APPROVED	UNSPECIFIED TOLERANCES
△X					L > 63 ± 0.5
△X					16 < L ≤ 63 ± 0.4
△X					4 < L ≤ 16 ± 0.3
△X					L ≤ 4 ± 0.2
					ANGULAR ± 5°

For and on behalf of
XKB INDUSTRIAL PRECISION CO., LIMITED
 香港星洲工業精密有限公司

DSND	DATE	SCALE: N/A	MODEL TYPE: X2009WVS-XX-9T SW
DWN	DATE	VIEW:	PART NO.:
CHKD	DATE	UNIT: mm	DWG NO.:
APPD	DATE	SIZE: A4	

WEIGHT	SHEET	REVISION
1.0g	1/1	A0

PCB LAYOUT (Tolerance: ±0.05)



PART NO	Material	PA9T UL 94V-0	Material	TIn-Plated	Brass	TIn-Plated	Material	(Solder Tabs)	(Solder Tabs)	Finish	(Pin)	Dimensions (mm)			
												A	B	C	
08	14.00	22.60	16.80	15	28.00	36.60	30.80	08	07	06	05	04	03	02	01
07	12.00	20.60	14.80	14	26.00	34.60	28.80	06	05	04	03	02	01		
06	10.00	18.60	12.80	13	24.00	32.60	26.80	05	04	03	02	01			
05	8.00	16.60	10.80	12	22.00	30.60	24.80	04	03	02	01				
04	6.00	14.60	8.80	11	20.00	28.60	22.80	03	02	01					
03	4.00	12.60	6.80	10	18.00	26.60	20.80	02	01						
02	2.00	10.90	4.80	09	16.00	24.60	18.80	01							

- ① Series No.
- ② Category: W-WAFER
- ③ Welding Board Angle: V-Straight 180°
- ④ Welding Way: S-SMT
- ⑤ Row No.-Pin No.: XX-02P~15P
- ⑥ Material: 9T -PA9T 94V-0
- ⑦ Plating Category: SW-Fog Tin plating

- Specifications :
- Voltage rating: 125 V AC / DC
 - Current rating: 3 A AC / DC
 - Withstanding voltage: 500 V AC/minute
 - Temperature range: -45 ~ +105
 - Insulation resistance: ≥1000MΩ
 - Contact resistance: ≤10mΩ
 - After environmental testing: ≤20mΩ

X2009 W V S-XX-9T SW
 ① ② ③ ④ ⑤ ⑥ ⑦

X-ON Electronics

Largest Supplier of Electrical and Electronic Components

Click to view similar products for [Headers & Wire Housings](#) category:

Click to view products by [XKB](#) manufacturer:

Other Similar products are found below :

[95000-104TRLF](#) [10135584-644402LF](#) [DF62W-EP2022PCA](#) [95000-106TRLF](#) [DF62W-2022SCA](#) [DF62W-EP2022PC](#) [2203348](#) [DF62W-2022SC](#) [1084018](#) [1029039](#) [1084017](#) [802-10-012-10-002000](#) [1112640](#) [1112639](#) [891-007-9SS-BST1T](#) [000-34000](#) [0008550134](#) [0009482033](#) [0009507031](#) [57102-F02-18ULF](#) [57102-S06-03LF](#) [57202-S52-04LF](#) [PCN6-15S-2.5E](#) [0039019024](#) [58102-G61-06LF](#) [582553-1](#) [0009485154](#) [0009508121](#) [0022285053](#) [0050291907](#) [018731A](#) [LY20-4P-DT1-P1E-BR](#) [02.125.8002.8](#) [60101931](#) [60598-1 \(Cut Strip\)](#) [M1625-3R/100](#) [61062-3](#) [61082-181009](#) [CSU011177004](#) [636-1427](#) [638009-1](#) [641938-9](#) [641991-4](#) [644168-1](#) [644827-2](#) [647662-1](#) [65039-019ELF](#) [65692-001LF](#) [65781-018](#) [65781-047](#)