

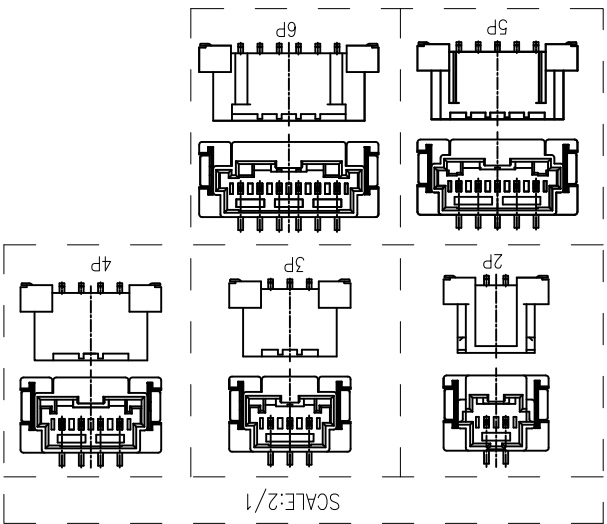
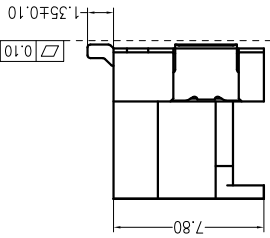
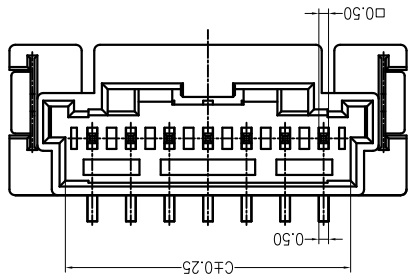
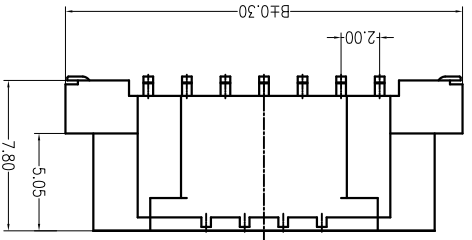
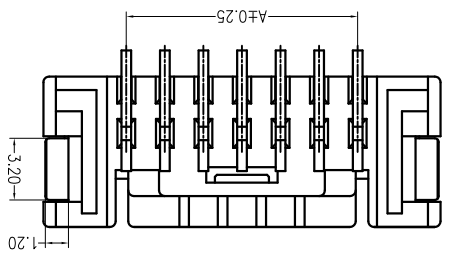
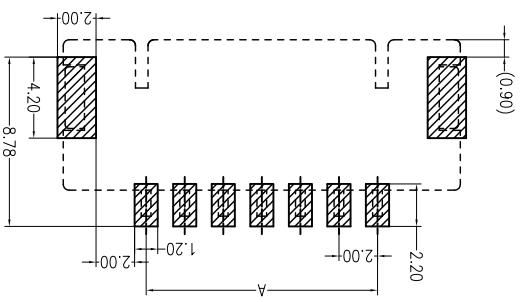
For and on behalf of  
**XKB INDUSTRIAL PRECISION CO., LIMITED**  
 香港星洲工業精密有限公司

REVISIONS  
 Authorized Signatures(s)

MARK	DESCRIPTION	DATE	REVISED	APPROVED	UNSPECIFIED TOLERANCES
△ X					L > 63
△ X					16 < L ≤ 63
△ X					4 < L ≤ 16
△ X					L ≤ 4
					ANGULAR
					± 5°

DATE	SCALE: N/A	MODEL TYPE: X2009WVS-XX-9T SW
DNSD		
DWN		
CHKD		
APPD		
	DATE	
	VIEW:	
	UNIT: mm	
	SIZE: A4	
	PART NO.: X2009WVS-XX-9T SW	
	DWG NO.:	
	2.00mm Crimp Style Connectors	
	WEIGHT	1.0g
	SHEET	1/1
	REVISION	A0

PCB LAYOUT(Tolerance:±0.05)



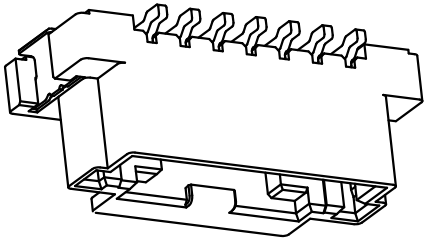
PART NO	Material	Material (Pin)	Finish (Pin)	Material (Solder Tabs)	Finish (Solder Tabs)	Suitable XKB Terminal
X2009WVS-XX-9T SW	PA9T UL 94V-0	Brass	Tin-Plated	Brass	Tin-Plated	X2009H

Poles	Dimensions (mm)		
	A	B	C
02	2.00	10.90	4.80
03	4.00	12.60	6.80
04	6.00	14.60	8.80
05	8.00	16.60	10.80
06	10.00	18.60	12.80
07	12.00	20.60	14.80
08	14.00	22.60	16.80
			15
			14
			13
			12
			11
			10
			9
			8
			7
			6
			5
			4
			3
			2
			1

- ① Series No.
- ② Category: W-WAFER
- ③ Welding Board Angle: V-Straight 180°
- ④ Welding Way: S-SMT
- ⑤ Row No.-Pin No.: XX-02P~15P
- ⑥ Material: 9T -PA9T 94V-0
- ⑦ Plating Category: SW-Fog Tin plating

X2009 W V S-XX-9T SW  
 ① ② ③ ④ ⑤ ⑥ ⑦

- Specifications :
- Voltage rating: 125 V AC / DC
- Current rating: 3 A AC / DC
- Withstanding voltage: 500 V AC/minute
- Temperature range: -45 ~ +105
- Insulation resistance: ≥1000MΩ
- Contact resistance: ≤10mΩ
- After environmental testing: ≤20mΩ



## X-ON Electronics

Largest Supplier of Electrical and Electronic Components

*Click to view similar products for [Headers & Wire Housings](#) category:*

*Click to view products by [XKB](#) manufacturer:*

Other Similar products are found below :

[95000-104TRLF](#) [10135584-644402LF](#) [DF62W-EP2022PCA](#) [95000-106TRLF](#) [DF62W-2022SCA](#) [DF62W-EP2022PC](#) [2203348](#) [DF62W-2022SC](#) [1084018](#) [1029039](#) [1084017](#) [802-10-012-10-002000](#) [1112640](#) [1112639](#) [891-007-9SS-BST1T](#) [000-34000](#) [0008550134](#) [0009482033](#) [0009507031](#) [57102-F02-18ULF](#) [57102-S06-03LF](#) [57202-S52-04LF](#) [PCN6-15S-2.5E](#) [0039019024](#) [58102-G61-06LF](#) [582553-1](#) [0009485154](#) [0009508121](#) [0022285053](#) [0050291907](#) [018731A](#) [LY20-4P-DT1-P1E-BR](#) [02.125.8002.8](#) [60101931](#) [60598-1 \(Cut Strip\)](#) [M1625-3R/100](#) [61062-3](#) [61082-181009](#) [CSU011177004](#) [636-1427](#) [638009-1](#) [641938-9](#) [641991-4](#) [644168-1](#) [644827-2](#) [647662-1](#) [65039-019ELF](#) [65692-001LF](#) [65781-018](#) [65781-047](#)