

For and on behalf of
XKB INDUSTRIAL PRECISION CO., LIMITED
 香港星洲工業精密有限公司

MARK	DESCRIPTION	REVISIONS		
		DATE	REVISED	APPROVED
△ X				
△ X				
△ X				

Authorized Signature(s)

UNSPECIFIED TOLERANCES

	APPROVED	REVISED	DATE
±5°			ANGULAR
±0.2			L ≤ 4
±0.3			4 < L ≤ 16
±0.4			16 < L ≤ 63
±0.5			L > 63

DSND	DATE	SCALE: N/A	MODEL TYPE: X2009WVS-XX-9T SW
DWN	DATE	VIEW:	PART NO.:
CHKD	DATE	UNIT: mm	DWG NO.:
APPD	DATE	SIZE: A4	
REVISION	SHEET	WEIGHT	
A0	1/1	1.0g	

Specifications :

- Voltage rating: 125 V AC / DC
- Current rating: 3 A AC / DC
- Withstanding voltage: 500 V AC/minute
- Temperature range: -45 - +105
- Insulation resistance: ≥1000MΩ
- Contact resistance: ≤10mΩ
- After environmental testing: ≤20mΩ

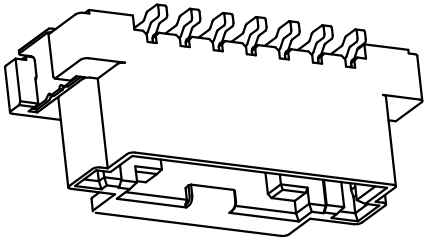
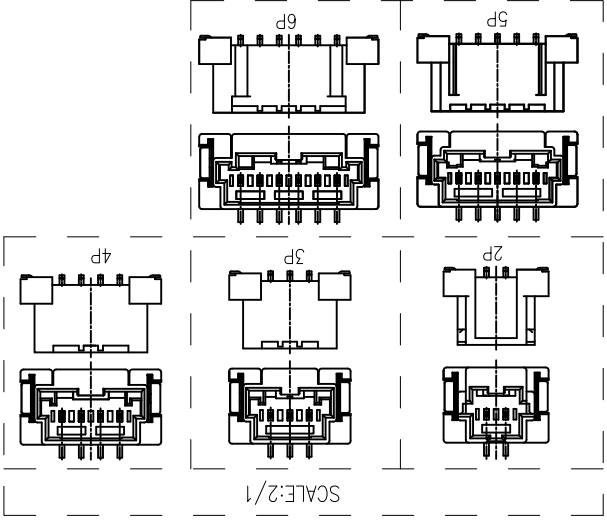
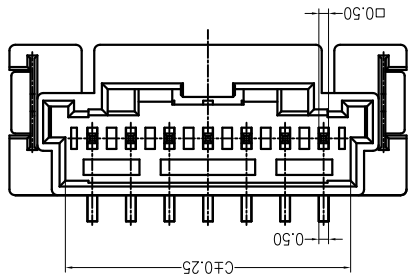
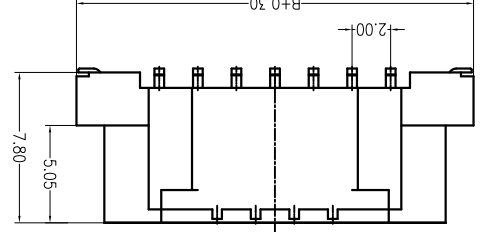
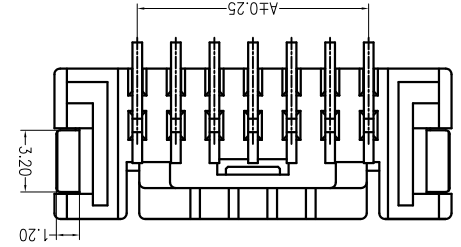
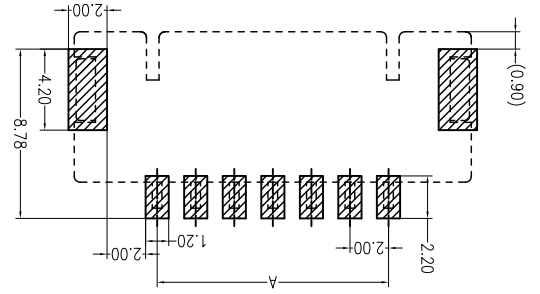
X2009 W V S-XX-9T SW
 ① ② ③ ④ ⑤ ⑥ ⑦

- ① Series No.
- ② Category: W-WAFER
- ③ Welding Board Angle: V-Straight 180°
- ④ Welding Way: S-SMT
- ⑤ Row No.-Pin No.: XX-02P~15P
- ⑥ Material: 9T -PA9T 94V-0
- ⑦ Plating Category: SW-Fog Tin plating

Poles	Dimensions (mm)		
	A	B	C
02	2.00	10.90	4.80
03	4.00	12.60	6.80
04	6.00	14.60	8.80
05	8.00	16.60	10.80
06	10.00	18.60	12.80
07	12.00	20.60	14.80
08	14.00	22.60	16.80
Poles			
Dimensions (mm)			
A	20.00	28.00	36.60
B	16.00	24.60	32.60
C	18.80	26.80	34.80

PART NO	Material	Material (Pin)	Finish (Pin)	Material (Solder Tabs)	Finish (Solder Tabs)	Suitable XKB Terminal
X2009WVS-XX-9T SW	PA9T UL 94V-0	Brass	Tin-Plated	Brass	Tin-Plated	X2009H

PCB LAYOUT (Tolerance: ±0.05)



X-ON Electronics

Largest Supplier of Electrical and Electronic Components

Click to view similar products for [Headers & Wire Housings](#) category:

Click to view products by [XKB](#) manufacturer:

Other Similar products are found below :

[95000-104TRLF](#) [10135584-644402LF](#) [DF62W-EP2022PCA](#) [95000-106TRLF](#) [DF62W-2022SCA](#) [DF62W-EP2022PC](#) [2203348](#) [DF62W-2022SC](#) [1084018](#) [1029039](#) [1084017](#) [802-10-012-10-002000](#) [1112640](#) [1112639](#) [891-007-9SS-BST1T](#) [000-34000](#) [0008550134](#) [0009482033](#) [0009507031](#) [57102-F02-18ULF](#) [57102-S06-03LF](#) [57202-S52-04LF](#) [PCN6-15S-2.5E](#) [0039019024](#) [58102-G61-06LF](#) [582553-1](#) [0009485154](#) [0009508121](#) [0022285053](#) [0050291907](#) [018731A](#) [LY20-4P-DT1-P1E-BR](#) [02.125.8002.8](#) [60101931](#) [60598-1 \(Cut Strip\)](#) [M1625-3R/100](#) [61062-3](#) [61082-181009](#) [CSU011177004](#) [636-1427](#) [638009-1](#) [641938-9](#) [641991-4](#) [644168-1](#) [644827-2](#) [647662-1](#) [65039-019ELF](#) [65692-001LF](#) [65781-018](#) [65781-047](#)