

For and on behalf of
XKB INDUSTRIAL PRECISION CO., LIMITED
 香港星坤工業精密有限公司

MARK	DESCRIPTION	DATE	REVISED	APPROVED	UNSPECIFIED TOLERANCES
△ X					L > 63
△ X					16 < L ≤ 63
△ X					4 < L ≤ 16
△ X					L ≤ 4
					ANGULAR
					±5°

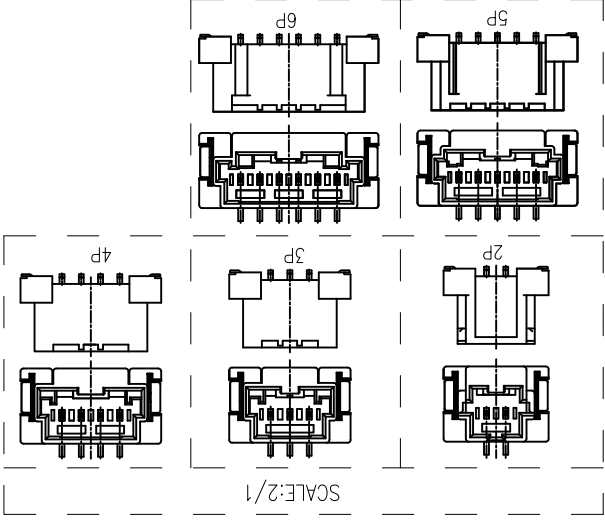
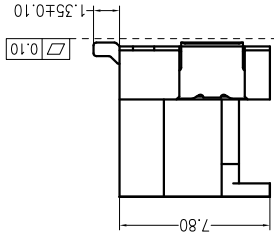
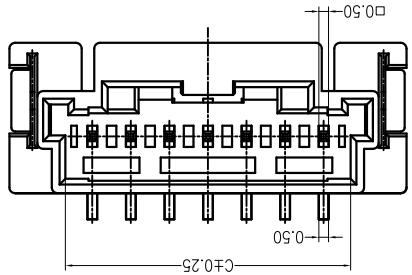
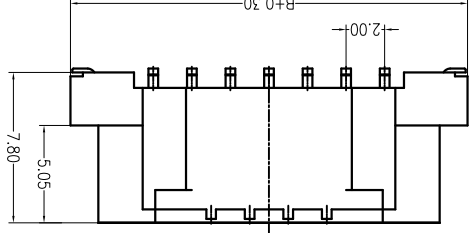
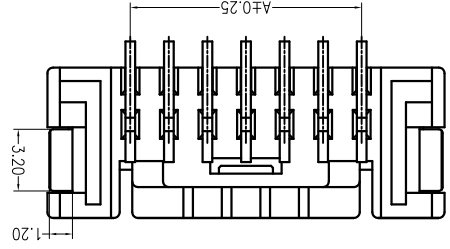
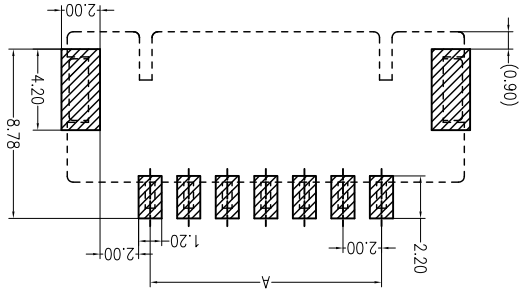
REVISIONS (Authorized Signatures)

XKB INDUSTRIAL PRECISION CO., LIMITED

WEIGHT	SHEET	REVISION
1.0g	1/1	A0

DSND	DATE	SCALE	N/A	MODEL TYPE
				X2009WVS-XX-9T SW
DWN	DATE	VIEW	VIEW: mm	PART NO.:
CHKD	DATE	UNIT	UNIT: mm	DWG NO.:
				2.00mm Crimp Style Connectors
APPD	DATE	SIZE	SIZE: A4	

PCB LAYOUT (Tolerance: ±0.05)

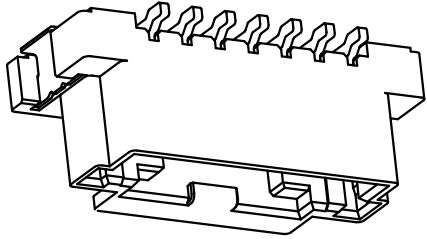


PART NO	Material	Material (Pin)	Finish (Pin)	Material (Solder Tabs)	Finish (Solder Tabs)	Suitable XKB Terminal		
							PA9T UL 94V-0	Brass
08	14.00	22.60	16.80	15	28.00	36.60		
07	12.00	20.60	14.80	14	26.00	34.60		
06	10.00	18.60	12.80	13	24.00	32.60		
05	8.00	16.60	10.80	12	22.00	30.60		
04	6.00	14.60	8.80	11	20.00	28.60		
03	4.00	12.60	6.80	10	18.00	26.60		
02	2.00	10.90	4.80	09	16.00	24.60		
	A	B	C		A	B		
	Dimensions (mm)		Poles				Dimensions (mm)	

- ① Series No.
- ② Category: W-WAFER
- ③ Welding Board Angle: V-Straight 180°
- ④ Welding Way: S-SMT
- ⑤ Row No.-Pin No.: XX-02P~15P
- ⑥ Material: 9T -PA9T 94V-0
- ⑦ Plating Category: SW-Fog Tin plating

X2009 W V S-XX-9T SW ① ② ③ ④ ⑤ ⑥ ⑦

- Specifications :**
- Voltage rating: 125 V AC / DC
 - Current rating: 3 A AC / DC
 - Withstanding voltage: 500 V AC/minute
 - Temperature range: -45 ~ +105
 - Insulation resistance: ≥1000MΩ
 - Contact resistance: ≤10mΩ
 - After environmental testing: ≤20mΩ



X-ON Electronics

Largest Supplier of Electrical and Electronic Components

Click to view similar products for [Headers & Wire Housings](#) category:

Click to view products by [XKB](#) manufacturer:

Other Similar products are found below :

[95000-104TRLF](#) [10135584-644402LF](#) [DF62W-EP2022PCA](#) [95000-106TRLF](#) [DF62W-2022SCA](#) [DF62W-EP2022PC](#) [2203348](#) [DF62W-2022SC](#) [1084018](#) [1029039](#) [1084017](#) [802-10-012-10-002000](#) [1112640](#) [1112639](#) [891-007-9SS-BST1T](#) [000-34000](#) [0008550134](#) [0009482033](#) [0009507031](#) [57102-F02-18ULF](#) [57102-S06-03LF](#) [57202-S52-04LF](#) [PCN6-15S-2.5E](#) [0039019024](#) [58102-G61-06LF](#) [582553-1](#) [0009485154](#) [0009508121](#) [0022285053](#) [0050291907](#) [018731A](#) [LY20-4P-DT1-P1E-BR](#) [02.125.8002.8](#) [60101931](#) [60598-1 \(Cut Strip\)](#) [M1625-3R/100](#) [61062-3](#) [61082-181009](#) [CSU011177004](#) [636-1427](#) [638009-1](#) [641938-9](#) [641991-4](#) [644168-1](#) [644827-2](#) [647662-1](#) [65039-019ELF](#) [65692-001LF](#) [65781-018](#) [65781-047](#)