

MARK		DESCRIPTION			DATE			REVISED	APPROVED	UNSPECIFIED TOLERANCES	
△X										L > 63	±0.5
△X										16 < L ≤ 63	±0.4
△X										4 < L ≤ 16	±0.3
△X										L ≤ 4	±0.2
										ANGULAR	±5°

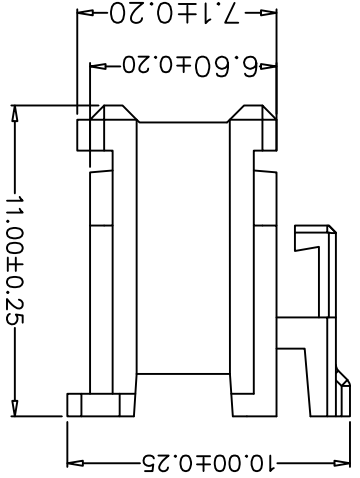
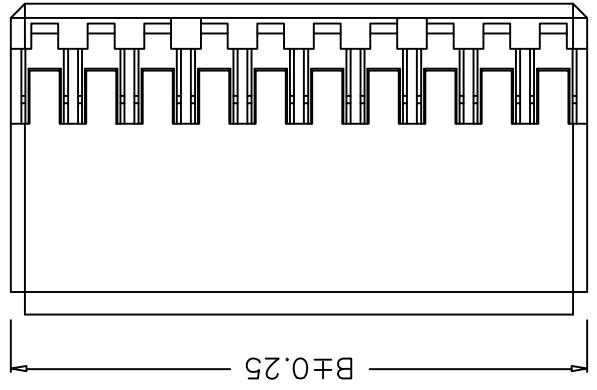
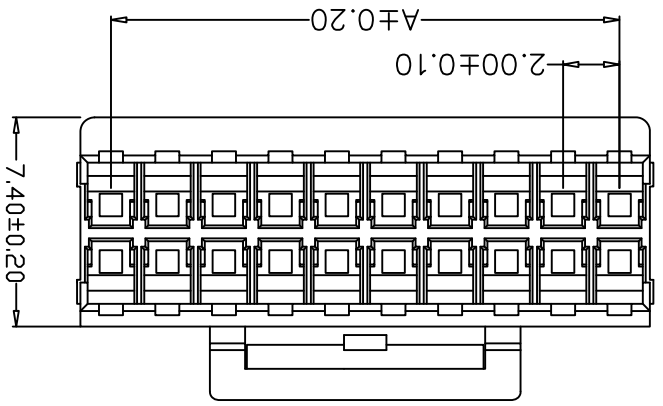
For and on behalf of
KXB INDUSTRIAL PRECISION CO., LIMITED
 香港星坤工業精密有限公司

REVISIONS		DATE		APPROVED	UNSPECIFIED TOLERANCES	
SIGNATURE(S)						

REVISION	SHEET	WEIGHT	KXB INDUSTRIAL PRECISION CO., LIMITED	
A0	1/1	1.0g		

DNSD	DATE	SCALE: N/A	MODEL	X2015H-2*XX-N0
DWN	DATE	VIEW:	PART NO.:	
CHKD	DATE	UNIT: mm	DWG NO.:	
APPD	DATE	SIZE: A4		

PART NO	Material	Suitable XKB Terminal	Suitable XKB Terminal
X2015H-2*XX-N0	Nylon 66 UL 94V-0	X2015T	X2015W



Poles	Dimensions (mm)	
	A	B
2*02	2.00	5.90
2*03	4.00	7.90
2*04	6.00	9.90
2*05	8.00	11.90
2*06	10.00	13.90
2*07	12.00	15.90
2*08	14.00	17.90
2*09	16.00	19.90
2*10	18.00	21.90
2*11	20.00	23.90
2*12	22.00	25.90

X2015 H-2*XX-N0

① Series No.
 ② Category: H-HSG
 ③ Row No.-Pin No.: 2*XX-2*02P-2*20P
 ④ Material: N0-PA66 94V-0

- Specifications:
- Voltage rating: 250V AC / DC
 - Current rating: 3A AC / DC
 - Withstanding voltage: 800V AC/minute
 - Temperature range: -25°C~+85°C
 - Insulation resistance: ≥1000MΩ
 - Contact resistance: ≤10mΩ
 - After environmental testing: ≤20mΩ

X-ON Electronics

Largest Supplier of Electrical and Electronic Components

Click to view similar products for [Headers & Wire Housings](#) category:

Click to view products by [XKB](#) manufacturer:

Other Similar products are found below :

[95000-104TRLF](#) [10135584-644402LF](#) [DF62W-EP2022PCA](#) [95000-106TRLF](#) [DF62W-2022SCA](#) [DF62W-EP2022PC](#) [2203348](#) [DF62W-2022SC](#) [1084018](#) [1029039](#) [1084017](#) [802-10-012-10-002000](#) [1112640](#) [1112639](#) [891-007-9SS-BST1T](#) [000-34000](#) [0008550134](#) [0009482033](#) [0009507031](#) [57102-F02-18ULF](#) [57102-S06-03LF](#) [57202-S52-04LF](#) [PCN6-15S-2.5E](#) [0039019024](#) [58102-G61-06LF](#) [582553-1](#) [0009485154](#) [0009508121](#) [0022285053](#) [0050291907](#) [018731A](#) [LY20-4P-DT1-P1E-BR](#) [02.125.8002.8](#) [60101931](#) [60598-1 \(Cut Strip\)](#) [M1625-3R/100](#) [61062-3](#) [61082-181009](#) [CSU011177004](#) [636-1427](#) [638009-1](#) [641938-9](#) [641991-4](#) [644168-1](#) [644827-2](#) [647662-1](#) [65039-019ELF](#) [65692-001LF](#) [65781-018](#) [65781-047](#)