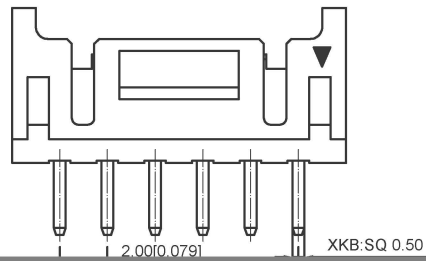
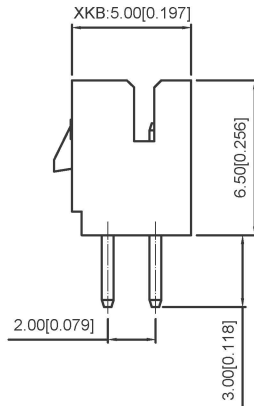
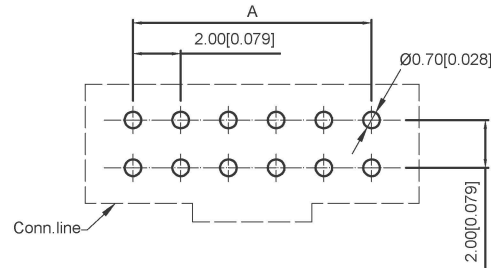


02P~04P Shape(Scale1:1)



05P~13P Shape(Scale1:1)



Recommended PCB Layout  
General Tolerance±0.05

**Specifications:**

规格:  
Voltage rating:250V AC/DC  
额定电压: 250V AC/DC  
Current rating:3A AC/DC  
额定电流: 3A AC/DC  
Withstanding voltage:800V AC/minute  
耐受电压: 800V AC/分钟  
Temperature range:-25℃~+85℃  
温度范围: -25℃~+85℃  
Insulation resistance:≥1000MΩ  
绝缘电阻: ≥1000MΩ  
Contact resistance:≤10mΩ  
接触电阻: ≤10mΩ  
After environmental testing:≤20mΩ  
环境测试后: ≤20兆欧

**X2026 W V X-2xXXB-N0SN XX**

① ② ③ ④ ⑤ ⑥ ⑦ ⑧ ⑨

- 1.Series No
- 2.Category:W-WAFER
- 3.Welding Board Angle:V-Straight 180°
- 4.Welding Way:Blank-DIP
- 5.Row No-Pin No:2xXX-2x02P~2x22P
- 6.Plug the Pin&Special NO:  
B-With Lock In the middle
- 7.Material:N0-PA66 94V-0
- 8.Plating Category:SN-Bright Tin Plating
- 9.Color:Blank-Natural Color

| poles | Dimensions(mm) |       |       | poles | Dimensions(mm) |       |       | Poles | Dimensions(mm) |       |       |
|-------|----------------|-------|-------|-------|----------------|-------|-------|-------|----------------|-------|-------|
|       | A              | B     | C     |       | A              | B     | C     |       | A              | B     | C     |
| 2x02  | 2.00           | 6.00  | 4.70  | 2x10  | 18.00          | 22.00 | 20.70 | 2x18  | 34.00          | 38.00 | 36.70 |
| 2x03  | 4.00           | 8.00  | 6.70  | 2x11  | 20.00          | 24.00 | 22.70 | 2x19  | 36.00          | 40.00 | 38.70 |
| 2x04  | 6.00           | 10.00 | 8.70  | 2x12  | 22.00          | 26.00 | 24.70 | 2x20  | 38.00          | 42.00 | 40.70 |
| 2x05  | 8.00           | 12.00 | 10.70 | 2x13  | 24.00          | 28.00 | 26.70 | 2x21  | 40.00          | 44.00 | 42.70 |
| 2x06  | 10.00          | 14.00 | 12.70 | 2x14  | 26.00          | 30.00 | 28.70 | 2x22  | 42.00          | 46.00 | 44.70 |
| 2x07  | 12.00          | 16.00 | 14.70 | 2x15  | 28.00          | 32.00 | 30.70 | 2x23  | 44.00          | 48.00 | 46.70 |
| 2x08  | 14.00          | 18.00 | 16.70 | 2x16  | 30.00          | 34.00 | 32.70 | 2x24  | 46.00          | 50.00 | 48.70 |
| 2x09  | 16.00          | 20.00 | 18.70 | 2x17  | 32.00          | 36.00 | 34.70 | 2x25  | 48.00          | 52.00 | 50.70 |

|                     |               |               |             |                       |
|---------------------|---------------|---------------|-------------|-----------------------|
| X2026WV-2xXXB-N0 SN | PA66 UL 94V-0 | Brass         | Tin-Plated  | X2026H-B              |
| PART NO             | Material      | Material(pin) | Finish(Pin) | Suitable XKB Terminal |

广东星坤科技股份有限公司

|      |       |
|------|-------|
| 生    | 日期    |
| 效    |       |
| 效    |       |
| 效    |       |
| MARK | 文件工程章 |

|                        |         |
|------------------------|---------|
| units:                 | mm      |
| tolerance:             |         |
| X.X                    | ±0.2mm  |
| X.XX                   | ±0.1mm  |
| X.XXX                  | ±0.05mm |
| UNSPECIFIED TOLERANCES |         |

|                                       |      |             |
|---------------------------------------|------|-------------|
| DSND                                  | DATE | SCALE: N/A  |
| DWN                                   | DATE | VIEW: ①     |
| CHKD                                  | DATE | UNIT: mm/in |
| APPD                                  | DATE | SIZE: A4    |
| KKB INDUSTRIAL PRECISION CO., LIMITED |      |             |

|  |       |          |
|--|-------|----------|
| MODEL TYPE:<br>Wire to board connector     |       |          |
| PART NO.:<br>2.00mm Crimp Style Connectors |       |          |
| DWG NO.:<br>X2026WV-2xXXB-N0SN             |       |          |
| WEIGHT                                     | SHEET | REVISION |
| 1.0g                                       | 1/1   | A0       |

## X-ON Electronics

Largest Supplier of Electrical and Electronic Components

*Click to view similar products for [Headers & Wire Housings](#) category:*

*Click to view products by [XKB](#) manufacturer:*

Other Similar products are found below :

[57102-F02-18ULF](#) [58102-G61-06LF](#) [582553-1](#) [009176003701906](#) [01.001.5753.1](#) [0050291907](#) [02.125.8002.8](#) [609-3404](#) [61062-3](#)  
[CSU011177004](#) [622-0430](#) [622-3653LF](#) [63453-116](#) [636-1030](#) [636-1427](#) [636-3427](#) [636-4007](#) [641938-9](#) [644827-2](#) [65495-038](#) [65692-001LF](#)  
[65781-018](#) [65781-047](#) [65817-010LF](#) [65817-015LF](#) [66207-023LF](#) [67095-007LF](#) [67601157](#) [68631-112](#) [68645-018](#) [699319-000](#)  
[M90C108951C](#) [70.362.1628.0](#) [70-4210](#) [70-4226B](#) [70-4853B](#) [707-5028](#) [71.350.2428.0](#) [71961-016LF](#) [733-134](#) [733-162](#) [754199-000](#) [760-](#)  
[3052](#) [80.063.4001.1](#) [800-90-001-10-001000](#) [800-90-010-10-002000](#) [801-43-002-10-013000](#) [801-43-006-10-002000](#) [803-41-018-10-001000](#)  
[803-43-024-10-001000](#)