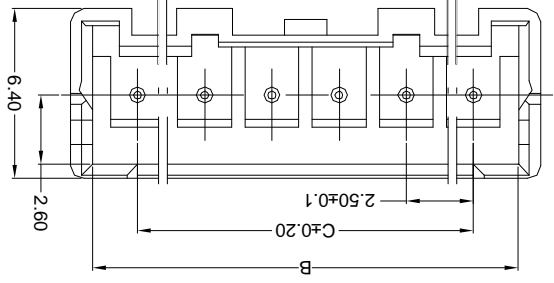
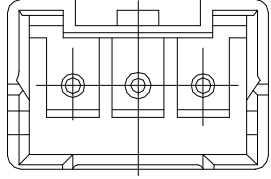
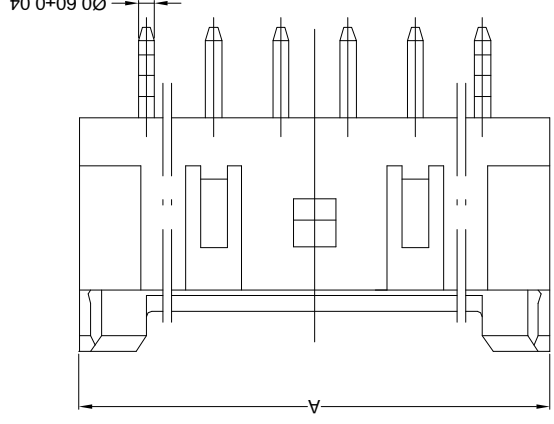
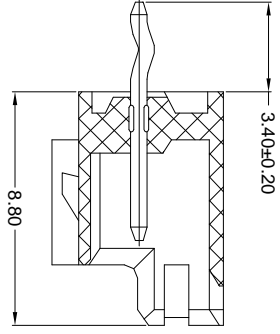


REVISIONS		UNSPECIFIED TOLERANCES		REVISIONS		UNSPECIFIED TOLERANCES	
MARK	DESCRIPTION	DATE	REVISED	APPROVED	L > 63	± 0.5	
△ X					16 < L ≤ 63	± 0.4	
△ X					4 < L ≤ 16	± 0.3	
△ X					L ≤ 4	± 0.2	
					ANGULAR	± 5°	
KXB INDUSTRIAL PRECISION CO., LIMITED 香港星坤工業精密有限公司				KXB INDUSTRIAL PRECISION CO., LIMITED 香港星坤工業精密有限公司			
For and on behalf of				KXB INDUSTRIAL PRECISION CO., LIMITED 香港星坤工業精密有限公司			

DSND	DATE	SCALE: N/A	MODEL TYPE: X2508WV-XX-N0SN
DWN	DATE	VIEW:	PART NO.: X2508WV-XX-N0SN
CHKD	DATE	UNIT: mm	DWG NO.: 2.50 mm Crimp Style connectors
APPD	DATE	SIZE: A4	

PART NO	Material	Material(Pin)	Finish(Pin)	Suitable XKB Terminal
X2508WV-XX-N0SN	Nylon 66 UL 94V-0	Brass	Tin-Plated	X2508H

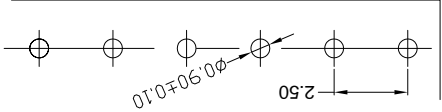
Poles	Dimensions (mm)	
	A	B
15	40.00	38.30
14	37.50	35.80
13	35.00	33.30
12	32.50	30.80
11	30.00	28.30
10	27.50	25.80
9	25.00	23.30
8	22.50	20.80
7	20.00	18.30
6	17.50	15.80
5	15.00	13.30
4	12.50	10.80
3	10.00	8.30
2	7.50	5.80
C		



2PIN和3PIN

4PIN以上

Recommand PCB Layout



- Specifications(规格) :
 - Voltage rating(额定电压) : 250V AC / DC
 - Current rating(额定电流) : 3A AC / DC
 - Withstanding voltage(耐压值) : 1500V AC/minute
 - Temperature range(工作温度) : -25°C~+85°C
 - Insulation resistance(绝缘电阻) : ≥500MΩ
 - Contact resistance(接触电阻) : ≤10mΩ
 - After environmental testing(环境测试后) : ≤20mΩ

- ① 系列 X2508 W V X-XX X-N0 SN XX
- ② 类别: W-WAFER类
- ③ 外观形态: V-180°
- ④ 成型方式: 空码-DIP
- ⑤ PIN数: 单排-XX
- ⑥ 空PIN位置及特殊码
- ⑦ 材质: N0-PA66 94V-0
- ⑧ 电镀类别: G**-镀金 V**-镀全金 *01-1U" *02-2U" *03-3U" *05-5U"
- ⑨ 颜色: SN-镀亮锡 (70-120U") SNI-镀亮锡 (120U"Min.) SW-镀雾锡 HS-高温锡 空码-本色或普通色

X-ON Electronics

Largest Supplier of Electrical and Electronic Components

Click to view similar products for [Headers & Wire Housings](#) category:

Click to view products by [XKB](#) manufacturer:

Other Similar products are found below :

[95000-104TRLF](#) [10135584-644402LF](#) [DF62W-EP2022PCA](#) [95000-106TRLF](#) [DF62W-2022SCA](#) [DF62W-EP2022PC](#) [2203348](#) [DF62W-2022SC](#) [1084018](#) [1029039](#) [1084017](#) [802-10-012-10-002000](#) [1112640](#) [1112639](#) [891-007-9SS-BST1T](#) [000-34000](#) [0008550134](#) [0009482033](#) [0009507031](#) [57102-F02-18ULF](#) [57102-S06-03LF](#) [57202-S52-04LF](#) [PCN6-15S-2.5E](#) [0039019024](#) [58102-G61-06LF](#) [582553-1](#) [0009485154](#) [0009508121](#) [0022285053](#) [0050291907](#) [018731A](#) [LY20-4P-DT1-P1E-BR](#) [02.125.8002.8](#) [60101931](#) [60598-1 \(Cut Strip\)](#) [M1625-3R/100](#) [61062-3](#) [61082-181009](#) [CSU011177004](#) [636-1427](#) [638009-1](#) [641938-9](#) [641991-4](#) [644168-1](#) [644827-2](#) [647662-1](#) [65039-019ELF](#) [65692-001LF](#) [65781-018](#) [65781-047](#)