

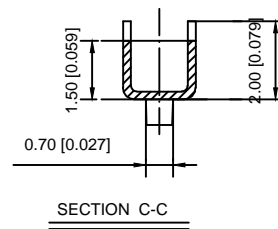
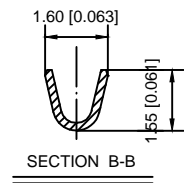
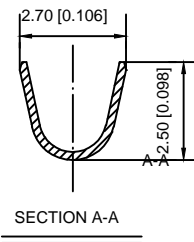
Specifications:

- Voltage rating: 250V AC/DC
- Current rating: 3A AC/DC
- Withstanding voltage: 800V AC/minute
- Temperature range: -25 °C ~ +85 °C
- Insulation resistance: $\geq 1000M\Omega$
- Contact resistance: $\leq 20m\Omega$
- After environmental testing: $\leq 20m\Omega$

X2509 T M-P SN

① ② ③ ④ ⑤

- ① XKB Series No.
- ② Category: T-terminal
- ③ M: male
- ④ Material: P-Phosphor bronze
- ⑤ Plating Category : SN-Bright Tin Plating



X2509TM-PSN	Phosphor bronze	AWG#22-28	1.2~1.9mm(Max)	Stamping Before Pating:30u"Ni MIN;70" Sn MIN	X2509HF
PART NO	Material	Wire Range	Insulation O.D.	Finish	Suitable XKB Terminal

DSND		DATE		SCALE: N/A	MODEL TYPE: X2509TM-PSN	
DWN		DATE		VIEW:	PART NO.:	
CHKD		DATE		UNIT: mm/in	DWG NO.:	
APPD		DATE		SIZE: A4		
XKB INDUSTRIAL PRECISION CO., LIMITED				WEIGHT	SHEET	REVISION
				1.0g	1/1	A0

XKB	ANGLAR	$\pm 5^\circ$
	$L \leq 4$	± 0.2
	$4 < L \leq 16$	± 0.3
	$16 < L \leq 63$	± 0.4
	$L > 63$	± 0.5
UNSPECIFIED TOLERANCES		

REVISIONS	DESCRIPTION	DATE	REVISED	APPROVED
www.helloxkb.com				

X-ON Electronics

Largest Supplier of Electrical and Electronic Components

Click to view similar products for [Terminals](#) category:

Click to view products by [XKB](#) manufacturer:

Other Similar products are found below :

[00-054007-01074-6](#) [00-054007-70206-1](#) [00-054007-70210-8](#) [00-054007-70217-7](#) [00-054007-70228-3](#) [00-054007-70256-6](#) [00-054007-70316-7](#) [00-054007-49560-4](#) [00-054007-70209-2](#) [00-054007-70231-3](#) [00-054007-70241-2](#) [00-054007-70242-9](#) [00-054007-70246-7](#) [00-054007-70263-4](#) [00-054007-70288-7](#) [00-054007-70290-0](#) [00-054007-70300-6](#) [00-054007-70304-4](#) [01-2900-1-04412](#) [00581P0075](#) [600TS-10](#) [604200-1](#) [605601-1](#) [60598-1-CUT-TAPE](#) [60617-1-C](#) [61314-6-C](#) [61810-3](#) [62149-1](#) [626-0194](#) [62-NBM-A](#) [62-SP](#) [63-S](#) [M55155/059I03](#)
[M55155/079C01](#) [M55155/099B03](#) [M55155/099H02](#) [M55155/109H01](#) [M55155/12XH05](#) [M55155/16XH02](#) [M55155/29-5S](#) [M55155/29XJ08](#)
[M55155/30-6S](#) [M55155/30-9S](#) [M55155/30XI09](#) [696683-1](#) [696861-1](#) [696999-1](#) [M86700006](#) [D18-110B-C](#) [D18-110B-M](#)