

REVISIONS
Authorized Signature(s)

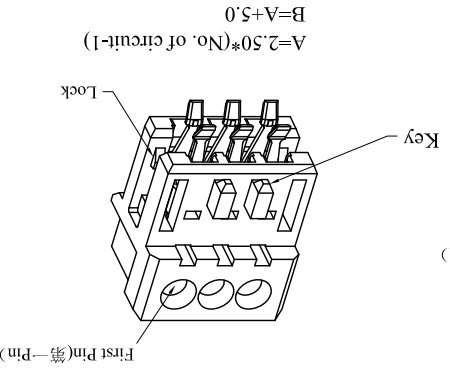
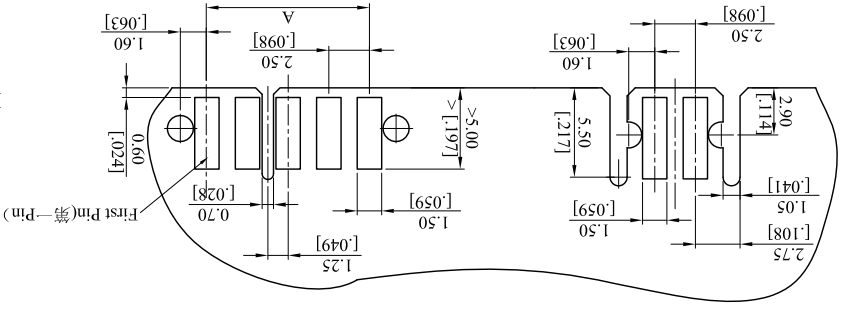
MARK	DESCRIPTION	DATE	REVISED	APPROVED	UNSPECIFIED TOLERANCES
△ X					L > 63 ± 0.5
△ X					16 < L ≤ 63 ± 0.4
△ X					4 < L ≤ 16 ± 0.3
					L ≤ 4 ± 0.2
					ANGULAR ± 5°

For and on behalf of
XKB INDUSTRIAL PRECISION CO., LIMITED
香港星坤工業精密有限公司

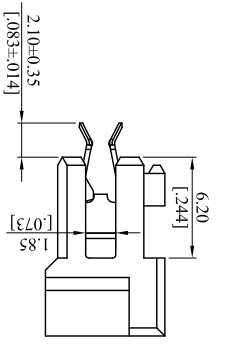
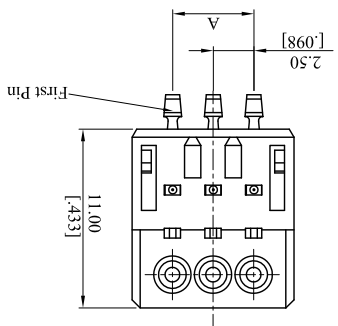
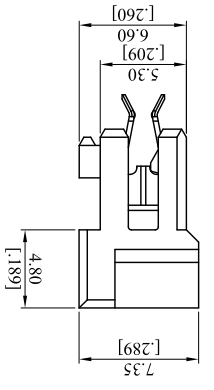
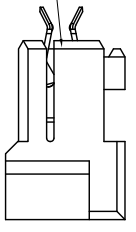
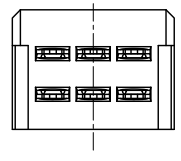
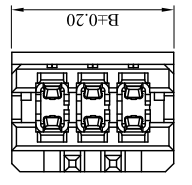
XKB INDUSTRIAL PRECISION CO., LIMITED

MODEL TYPE:	X2514H1-XXL-X-XX
PART NO.:	X2514H1-XXL-X-XX
DWG NO.:	2.5 mm IDC Style Connectors
REVISION	A0
SHEET	1/1
WEIGHT	1.0g

PCB LAYOUT



PART NO	Material	Wire Range	Material(Terminal)	Suitable XKB Terminal
X2514H1-XXL-X-XX	PA66 94V-0	AWG #22-#24	Phosphor Bronze	X2514W



- Specifications :**
- Voltage rating: 250VAC / DC
 - Temperature range -40 to +110
 - Insulator: PA66 UL 94V-0 Nature.
 - Terminal: Phosphor Bronze
- ① Series No. X2514H1-XXL-X-XX
- ② Category: H-HSG
- ③ Welding Board Angle: LHSG+hardware
- ④ Row No.-Pin No.: XX-Single row
- ⑤ L: With Lock
- ⑥ 0=Tin plated 120~200u" over Ni 30u" overall, for AWG #22-#24
- ⑦ 1=Tin plated 120~200u" over Ni 30u" overall, for AWG #26.
- G=Gold Flash over Ni 80~150u" overall.
- ⑦ See the Table of next page.

X-ON Electronics

Largest Supplier of Electrical and Electronic Components

Click to view similar products for [xkb](#) manufacturer:

Other Similar products are found below :

[SS-12D10L3](#) [U263-241N-4BQC11-1](#) [X3025WV-2x03-46SN](#) [X2026WVS-2x10D-LPSW](#) [X9357HF-2x12G-N2](#) [DSIC03LH-P](#) [TM-004-D2-03](#)
[X6511WV-24H-C30D60](#) [DC-025LM-5A-2.0](#) [X03A10L13G](#) [PJ-309A-2](#) [TM-1201-A](#) [DM1-135C-1](#) [PJ-3582-W](#) [X6521WV-2x26H-C30D60](#)
[X8826WR-2x05-N0SN](#) [DC-005G-2.5A-2.0](#) [X2015WR-2x04-N0SN](#) [X1011WVS-2x03-9TV01](#) [PJ-322A-Y](#) [DC-018-2.5A-2.0](#) [DM1-180D-1](#)
[DM1-117C-1](#) [X3025WRS-2x02E-LPSW](#) [DSIC07LH-P](#) [DS-09BLP](#) [DC-049A](#) [TS-1101-C-W](#) [TS-1159UB-B-B-W](#) [X2015H-2x05-N0](#)
[X3025WR-06-N0SN](#) [DA-12RP](#) [DA-09RP](#) [X03A10L51G](#) [X1015WM-30L-C](#) [X2510WRS-05-9TSN](#) [TM-004-D3-03](#) [XKB5858-W-F-75](#)
[X1002WVS-07E-LPSWHF](#) [TS-1159UB-B-D-BL](#) [X6521WV-2x11H-C30D60](#) [X2000WVS-03-9TSN](#) [X05A26H24G](#) [X2510WRS-02-9TSN](#)
[X05A20H24G](#) [X9821WV-11-N0SN](#) [X5050WV-04-N2SN](#) [X6511FV-03-C85D32](#) [X6521WR-2x16H-C30D60](#) [X6511WVS-05H-C60D48-R1](#)