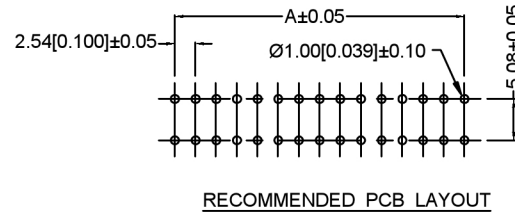
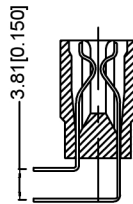


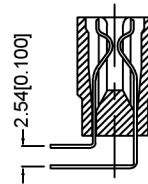
A TYPE



RECOMMENDED PCB LAYOUT



B TYPE



C TYPE

ELECTRICAL电气特性
DIELECTRIC WITHSTANDING VOLTAGE电介质耐受电压: 1,000 VAC RMS.
CURRENT RATING电流额定值: 3 AMP.
INSULATION RESISTANCE绝缘电阻: 5,000 MEG. OHMS MIN. AT 500 VDC.
CONTACT RESISTANCE接触电阻: 20 MILLI OHMS MAX.
MECHANICAL机械特性
INSERTION FORCE插入力: 340 GRAMS MAX PER CONTACT PAIR.
WITHDRAWAL FORCE拔出力: 28 GRAMS MIN PER CONTACT PAIR.
MATERIAL材料特性
INSULATOR绝缘体: GLASS-REINFORCED THERMOPLASTIC (PBT), UL94V-0 RATED.
CONTACT触点: COPPER ALLOY.
PLATING电镀: MATING AREA- SELECT GOLD OVER NICKEL. SOLDER AREA- TIN OR TIN/LEAD OVER NICKEL.
ENVIRONMENTAL环境特性
TEMPERATURE RANGE温度范围: -55° TO +85°.

X2549 W R - 2xXX X - 9T V01
 ① ② ③ ④ ⑤ ⑥ ⑦

1. Series Number
2. Terminal form: W-Wafer
3. Welding Board Angle : R-Stright 90°
4. No. of Pins: 2x03~2x52 PIN
5. Pin type: A-A Type ; B-B Type ; C-C Type
6. Plastic material: 9T- PA9T、PB-PBT
7. Plating: V01-Gold Flash 1u" ; V30-Gold Flash 30u"

NO OF POS	DIM A	DIM B	DIM C	DIM D	NO OF POS	DIM A	DIM B	DIM C	DIM D
2x03=6	5.08	10.16	14.22	11.62	2x28=56	68.58	73.66	77.72	75.12
2x04=8	7.62	12.70	16.76	14.16	2x29=58	71.12	76.20	80.26	77.66
2x05=10	10.16	15.24	19.30	16.70	2x30=60	73.66	78.74	82.80	80.20
2x06=12	12.70	17.78	21.84	19.24	2x31=62	76.20	81.28	85.34	82.74
2x07=14	15.24	20.32	24.38	21.78	2x32=64	78.74	83.82	87.88	85.28
2x08=16	17.78	22.86	26.92	24.32	2x33=66	81.28	86.36	90.42	87.82
2x09=18	20.32	25.40	29.46	26.86	2x34=68	83.82	88.90	90.42	87.82
2x10=20	22.86	27.94	32.00	29.40	2x35=70	86.36	91.44	95.50	92.90
2x11=22	25.40	30.48	34.54	31.94	2x36=78	96.52	101.60	105.66	103.06
2x12=24	27.94	33.02	37.08	34.48	2x37=74	91.44	96.52	100.58	97.98
2x13=26	30.48	35.56	39.62	37.02	2x38=76	93.98	99.06	103.12	100.52
2x14=28	33.02	38.10	42.16	39.56	2x39=78	96.52	101.60	105.66	103.06
2x15=30	35.56	40.64	44.70	42.10	2x40=80	99.06	104.14	108.20	105.60
2x16=32	38.10	43.18	47.24	44.64	2x41=82	101.60	106.68	110.74	108.14
2x17=34	40.64	45.72	49.78	47.18	2x42=82	104.14	109.22	113.28	110.68
2x18=36	43.18	48.26	52.32	49.72	2x43=86	106.68	111.76	115.82	113.22
2x19=38	45.72	50.80	54.86	52.26	2x44=88	109.22	114.30	118.36	115.76
2x20=40	48.26	53.34	57.40	54.80	2x45=90	111.76	116.84	120.90	118.30
2x21=42	50.80	55.88	59.94	57.34	2x46=92	114.30	119.38	123.44	120.84
2x22=44	53.34	58.42	62.48	59.88	2x47=94	116.84	121.92	125.98	123.38
2x23=46	55.88	60.96	65.02	62.42	2x48=96	119.38	124.46	128.52	125.92
2x24=48	58.42	63.50	67.56	64.96	2x49=98	129.54	134.62	138.68	136.08
2x25=50	60.96	66.04	70.10	67.50	2x50=100	124.46	129.54	133.60	131.00
2x26=52	63.50	68.58	72.64	70.04	2x51=102	127.00	132.08	136.14	133.54
2x27=54	66.04	71.12	75.18	72.58	2x52=104	129.54	134.62	138.68	136.08

DSND	SCALE: N/A	MODEL TYPE:
DWN	VIEW:	PART NO.: X2549WR-2xXXX-9TV01
CHKD	UNIT: mm/in	DWG NO.: X-X2549WR-2xXXX-9TV01
APPD	SIZE: A4	WEIGHT SHEET REVISION
KKB INDUSTRIAL PRECISION CO., LIMITED		1/1 A0



ANGLAR	±5°
L ≤ 4	±0.2
4 < L ≤ 16	±0.3
16 < L ≤ 63	±0.4
L > 63	±0.5
UNSPECIFIED TOLERANCES	

广东星坤科技股份有限公司

Δ*	日期
Δx	日期
Δx	日期

文件工程章

X-ON Electronics

Largest Supplier of Electrical and Electronic Components

Click to view similar products for [XKB](#) manufacturer:

Other Similar products are found below :

[A32-099A-111](#) [A37-1BL01-111-A](#) [A37-1BL01-111-B](#) [A71-05H3-111N1](#) [A71-05H4-111N1](#) [A71-05H5-111N1](#) [A71-05H5-151N1](#) [A71-05H6-111N1](#) [A71-05H7-111N1](#) [A71-05H8-111N2](#) [A71-05H9-111N1](#) [A71-06H0-111N1](#) [AX.ZBN.M12.P04.MPL.PBA24L1000.T5](#) [AX.ZLN.M12.P05.MPL.PBA24L1000.T5](#) [AX.ZLN.M12.P08.MPL.PBA26L1000.T5](#) [AX.ZLN.M12.P12.MPL.PBA26L1000.T5](#) [C3030HM-2x10-N2](#) [CAR06-201EN5F](#) [CAR06-201EN5S](#) [DA-01BLP](#) [DA-01RP](#) [DA-02BLP](#) [DA-02RP](#) [DA-03BLP](#) [DA-03RP](#) [DA-04BLP](#) [DA-04RP](#) [DA-05BLP](#) [DA-05RP](#) [DA-06BLP](#) [DA-06RP](#) [DA-07BLP](#) [DA-07RP](#) [DA-08BLP](#) [DA-08RP](#) [DA-09BLP](#) [DA-09RP](#) [DA-10BLP](#) [DA-10RP](#) [DA-12BLP](#) [DA-12RP](#) [DC-002-2.0A-1.0](#) [DC-002-2.0A-1.3](#) [DC-002-2.0A-1.65](#) [DC-002CB-2.0A-1.3](#) [DC-002H-1.65](#) [DC-002H-2.5A-1.3](#) [DC-002H-2.5A-1.65](#) [DC-003-2A-1.0](#) [DC-003-2A-1.3](#)