

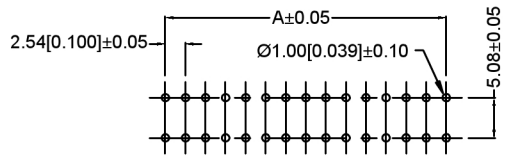
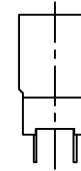
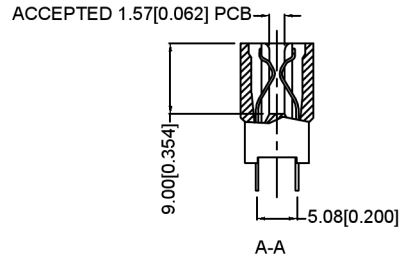
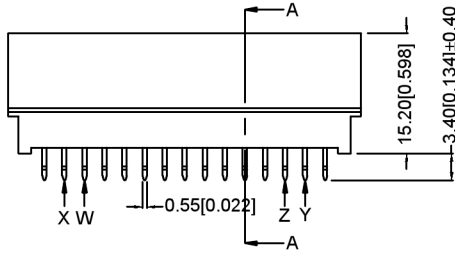
MATERIAL材料特性

- 1.HOUSING外壳: HIGH TEMPERATURE THERMOPLASTIC, UL94V-0
- 2.COLOR颜色: BLACK.
- 3.CONTACT触点: COPPER ALLOY.
- 4.FINISH表面处理: SELECTIVE GOLD PLATING ON CONTACT AREA:
100u" MIN. TIN PLATING ON SOLDER TAILS
50u" MIN. NICKEL UNDERPLATED OVERALL.

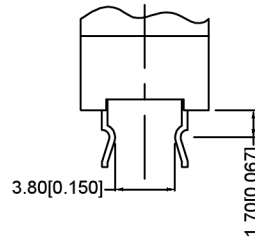
X2549 W V - 2xXX - 9T V01

- ① ② ③ ④ ⑤ ⑥

- ① Series Number
- ② Terminal form: W-Wafer
- ③ Welding Board Angle : V-Stright 180°
- ④ No.of Pins: 2xXX PIN
- ⑤ Plastic material: 9T-PA9T、PB-PBT
- ⑥ Contact Plating: V01-Gold Flash 1u" V30-Gold Flash 30u"



RECOMMENDED PCB LAYOUT



DETAIL OF KINKED

| NO OF POS | DIM A | DIM B | DIM C | KINKED | NO OF POS | DIM A | DIM B | DIM C | KINKED |
|-----------|-------|-------|-------|--------|-----------|--------|--------|--------|--------|
| 2X3=6 | 5.08 | 10.16 | 14.22 | --- | 2X26=52 | 63.50 | 68.58 | 72.64 | XY |
| 2X4=8 | 7.62 | 12.70 | 16.76 | --- | 2X27=54 | 66.04 | 71.12 | 75.18 | XY |
| 2X5=10 | 10.16 | 15.24 | 19.30 | --- | 2X28=56 | 68.58 | 73.66 | 77.72 | XY |
| 2X6=12 | 12.70 | 17.78 | 21.84 | --- | 2X29=58 | 71.12 | 76.20 | 80.26 | XY |
| 2X7=14 | 15.24 | 20.32 | 24.38 | --- | 2X30=60 | 73.66 | 78.74 | 82.80 | XY |
| 2X8=16 | 17.78 | 22.86 | 26.92 | --- | 2X31=62 | 76.20 | 81.28 | 85.34 | WZ |
| 2X9=18 | 20.32 | 25.40 | 29.46 | XY | 2X32=64 | 78.74 | 83.82 | 87.88 | WXYZ |
| 2X10=20 | 22.86 | 27.94 | 32.00 | XY | 2X33=66 | 81.28 | 86.36 | 90.42 | WXYZ |
| 2X11=22 | 25.40 | 30.48 | 34.54 | XY | 2X34=68 | 83.82 | 88.90 | 90.42 | WXYZ |
| 2X12=24 | 27.94 | 33.02 | 37.08 | XY | 2X35=70 | 86.36 | 91.44 | 95.50 | WXYZ |
| 2X13=26 | 30.48 | 35.56 | 39.62 | WXYZ | 2X36=78 | 96.52 | 101.60 | 105.66 | WXYZ |
| 2X14=28 | 33.02 | 38.10 | 42.16 | XY | 2X37=74 | 91.44 | 96.52 | 100.58 | WXYZ |
| 2X15=30 | 35.56 | 40.64 | 44.70 | XY | 2X38=76 | 93.98 | 99.06 | 103.12 | WXYZ |
| 2X16=32 | 38.10 | 43.18 | 47.24 | XY | 2X39=78 | 96.52 | 101.60 | 105.66 | WXYZ |
| 2X17=34 | 40.64 | 45.72 | 49.78 | XY | 2X40=80 | 99.06 | 104.14 | 108.20 | WXYZ |
| 2X18=36 | 43.18 | 48.26 | 52.32 | WXYZ | 2X41=82 | 101.60 | 106.68 | 110.74 | WXYZ |
| 2X19=38 | 45.72 | 50.80 | 54.86 | XY | 2X42=82 | 104.14 | 109.22 | 113.28 | WXYZ |
| 2X20=40 | 48.26 | 53.34 | 57.40 | XY | 2X43=86 | 106.68 | 111.76 | 115.82 | WXYZ |
| 2X21=42 | 50.80 | 55.88 | 59.94 | XY | 2X44=88 | 109.22 | 114.30 | 118.36 | WXYZ |
| 2X22=44 | 53.34 | 58.42 | 62.48 | XY | 2X45=90 | 111.76 | 116.84 | 120.90 | WXYZ |
| 2X23=46 | 55.88 | 60.96 | 65.02 | XY | 2X46=92 | 114.30 | 119.38 | 123.44 | WXYZ |
| 2X24=48 | 58.42 | 63.50 | 67.56 | XY | 2X47=94 | 116.84 | 121.92 | 125.98 | WXYZ |
| 2X25=50 | 60.96 | 66.04 | 70.10 | XY | 2X48=96 | 119.38 | 124.46 | 128.52 | WXYZ |

| | | | | | |
|---------------------------------------|--|------|--|-------------|------------------------------|
| DSND | | DATE | | SCALE: N/A | MODEL TYPE: |
| DWN | | DATE | | VIEW: | PART NO.: X2549WV-2xXX-9TV01 |
| CHKD | | DATE | | UNIT: mm/in | DWG NO.: |
| APPD | | DATE | | SIZE: A4 | X-X2549WV-2xXX-9TV01 |
| XKB INDUSTRIAL PRECISION CO., LIMITED | | | | WEIGHT | SHEET |
| | | | | 1.0g | 1/1 |
| | | | | REVISION | A0 |

广东星坤科技股份有限公司

| | |
|------|-------|
| DATE | 日期 |
| MARK | 文件工程章 |

REVISIONS

UNSPECIFIED TOLERANCES

www.xk-dg.cn www.helloxkb.com www.helloxkb.cn

X-ON Electronics

Largest Supplier of Electrical and Electronic Components

Click to view similar products for [XKB](#) manufacturer:

Other Similar products are found below :

[TC-1103-C-B](#) [TC-FS66D-C-A](#) [XKNANO-1307-16](#) [X9396WR-04-N0SN](#) [X9396WR-06-N0SN](#) [X0800WRS-06HF-LPV01](#) [U221-046N-4BU02-FS](#) [X3025WV-02-N0SN](#) [DC-0130-2.5A-2.0](#) [DC-0130-2.5A-2.5](#) [X6511WR-23H-C30D60-R2](#) [DF1-1365UNY-1](#) [XKB5858-Z-F-75](#) [X2011H-05A-N0](#) [X9821H-13A-N0](#) [U263-241N-4BQC13](#) [X6511WVS-12H-C60D48R2](#) [X6511WR-10H-C30D60R2](#) [X1270WVS-2x20A-6TV01](#) [TGG.0B.P04.CLAD52H](#) [ZGG.3K.P12.CLN](#) [ZGG.3K.P12.CLL](#) [ZGG.1K.P02.CLN](#) [ZEG.2K.P02.CLL](#) [ZCG.1B.P16.CLL](#) [TGG.2K.P02.CLAC50](#) [ZEG.3K.P12.CLN](#) [ZEG.2K.P12.CLN](#) [USB31-TYPE-C-FSABC](#) [X0510FVS-168AS-LPV01](#) [MHG.3K.P02.CLLC90H](#) [X6511FRS-05-C85D30](#) [X2001HA-PTAuN-A28B50-X2001HA-PTAuN-IDC](#) [X0709FT7BL1-A28G10-X9555H2-PTV01-IDC](#) [X2513WR-2x06A-LPSN](#) [PJ-3026](#) [TS-1101S-C-B-B-B](#) [SK-3390A-L1](#) [X05A20L17T](#) [TC-1102T-B](#) [X0800WRS-05HF-LPV01](#) [X1502WR-13K-N0SN](#) [U261-2422N-4B0178](#) [SS-3292S-L1-B](#) [X6511WR-04H-C30D60R2](#) [X9821WVS-16-9TSN](#) [X6511WR-03H-C30D60R2](#) [X1311FVS-05-C43D35R2](#) [X1311FR-02-C43D24](#) [X9821H-05A-N0](#)