

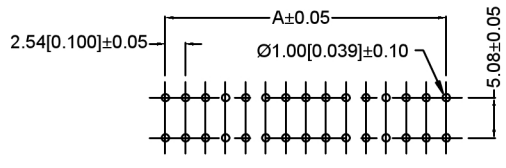
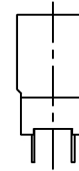
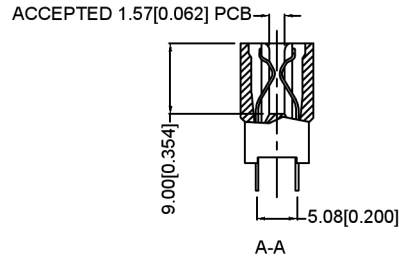
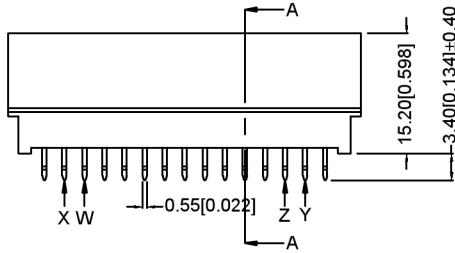
**MATERIAL材料特性**

1. HOUSING外壳: HIGH TEMPERATURE THERMOPLASTIC, UL94V-0
2. COLOR颜色: BLACK.
3. CONTACT触点: COPPER ALLOY.
4. FINISH表面处理: SELECTIVE GOLD PLATING ON CONTACT AREA:  
100u" MIN. TIN PLATING ON SOLDER TAILS  
50u" MIN. NICKEL UNDERPLATED OVERALL.

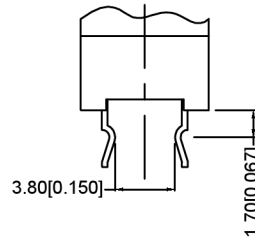
**X2549 W V - 2xXX - 9T V01**

- ① ② ③ ④ ⑤ ⑥

- ① Series Number
- ② Terminal form: W-Wafer
- ③ Welding Board Angle : V-Stright 180°
- ④ No. of Pins: 2xXX PIN
- ⑤ Plastic material: 9T-PA9T、PB-PBT
- ⑥ Contact Plating: V01-Gold Flash 1u"  
V30-Gold Flash 30u"



RECOMMENDED PCB LAYOUT



DETAIL OF KINKED

NO OF POS	DIM A	DIM B	DIM C	KINKED	NO OF POS	DIM A	DIM B	DIM C	KINKED
2X3=6	5.08	10.16	14.22	---	2X26=52	63.50	68.58	72.64	XY
2X4=8	7.62	12.70	16.76	---	2X27=54	66.04	71.12	75.18	XY
2X5=10	10.16	15.24	19.30	---	2X28=56	68.58	73.66	77.72	XY
2X6=12	12.70	17.78	21.84	---	2X29=58	71.12	76.20	80.26	XY
2X7=14	15.24	20.32	24.38	---	2X30=60	73.66	78.74	82.80	XY
2X8=16	17.78	22.86	26.92	---	2X31=62	76.20	81.28	85.34	WZ
2X9=18	20.32	25.40	29.46	XY	2X32=64	78.74	83.82	87.88	WXYZ
2X10=20	22.86	27.94	32.00	XY	2X33=66	81.28	86.36	90.42	WXYZ
2X11=22	25.40	30.48	34.54	XY	2X34=68	83.82	88.90	90.42	WXYZ
2X12=24	27.94	33.02	37.08	XY	2X35=70	86.36	91.44	95.50	WXYZ
2X13=26	30.48	35.56	39.62	WXYZ	2X36=78	96.52	101.60	105.66	WXYZ
2X14=28	33.02	38.10	42.16	XY	2X37=74	91.44	96.52	100.58	WXYZ
2X15=30	35.56	40.64	44.70	XY	2X38=76	93.98	99.06	103.12	WXYZ
2X16=32	38.10	43.18	47.24	XY	2X39=78	96.52	101.60	105.66	WXYZ
2X17=34	40.64	45.72	49.78	XY	2X40=80	99.06	104.14	108.20	WXYZ
2X18=36	43.18	48.26	52.32	WXYZ	2X41=82	101.60	106.68	110.74	WXYZ
2X19=38	45.72	50.80	54.86	XY	2X42=82	104.14	109.22	113.28	WXYZ
2X20=40	48.26	53.34	57.40	XY	2X43=86	106.68	111.76	115.82	WXYZ
2X21=42	50.80	55.88	59.94	XY	2X44=88	109.22	114.30	118.36	WXYZ
2X22=44	53.34	58.42	62.48	XY	2X45=90	111.76	116.84	120.90	WXYZ
2X23=46	55.88	60.96	65.02	XY	2X46=92	114.30	119.38	123.44	WXYZ
2X24=48	58.42	63.50	67.56	XY	2X47=94	116.84	121.92	125.98	WXYZ
2X25=50	60.96	66.04	70.10	XY	2X48=96	119.38	124.46	128.52	WXYZ

广东星坤科技股份有限公司

Δ#	日期
Δx	日期
Δx	日期

文件工程章

MARK	DESCRIPTION	DATE	REVISED	APPROVED	UNSPECIFIED TOLERANCES
					ANGLAR ±5°
					L ≤ 4 ±0.2
					4 < L ≤ 16 ±0.3
					16 < L ≤ 63 ±0.4
					L > 63 ±0.5

DSND		DATE		SCALE: N/A	MODEL TYPE:
DWN		DATE		VIEW:	PART NO.: X2549WV-2xXX-9TV01
CHKD		DATE		UNIT: mm/in	DWG NO.: X-X2549WV-2xXX-9TV01
APPD		DATE		SIZE: A4	WEIGHT 1.0g
XKB INDUSTRIAL PRECISION CO., LIMITED					SHEET 1/1
					REVISION A0

## X-ON Electronics

Largest Supplier of Electrical and Electronic Components

*Click to view similar products for [XKB](#) manufacturer:*

Other Similar products are found below :

[A32-099A-111](#) [A37-1BL01-111-A](#) [A37-1BL01-111-B](#) [A71-05H3-111N1](#) [A71-05H4-111N1](#) [A71-05H5-111N1](#) [A71-05H5-151N1](#) [A71-05H6-111N1](#) [A71-05H7-111N1](#) [A71-05H8-111N2](#) [A71-05H9-111N1](#) [A71-06H0-111N1](#) [AX.ZBN.M12.P04.MPL.PBA24L1000.T5](#) [AX.ZLN.M12.P05.MPL.PBA24L1000.T5](#) [AX.ZLN.M12.P08.MPL.PBA26L1000.T5](#) [AX.ZLN.M12.P12.MPL.PBA26L1000.T5](#) [C3030HM-2x10-N2](#) [CAR06-201EN5F](#) [CAR06-201EN5S](#) [DA-01BLP](#) [DA-01RP](#) [DA-02BLP](#) [DA-02RP](#) [DA-03BLP](#) [DA-03RP](#) [DA-04BLP](#) [DA-04RP](#) [DA-05BLP](#) [DA-05RP](#) [DA-06BLP](#) [DA-06RP](#) [DA-07BLP](#) [DA-07RP](#) [DA-08BLP](#) [DA-08RP](#) [DA-09BLP](#) [DA-09RP](#) [DA-10BLP](#) [DA-10RP](#) [DA-12BLP](#) [DA-12RP](#) [DC-002-2.0A-1.0](#) [DC-002-2.0A-1.3](#) [DC-002-2.0A-1.65](#) [DC-002CB-2.0A-1.3](#) [DC-002H-1.65](#) [DC-002H-2.5A-1.3](#) [DC-002H-2.5A-1.65](#) [DC-003-2A-1.0](#) [DC-003-2A-1.3](#)