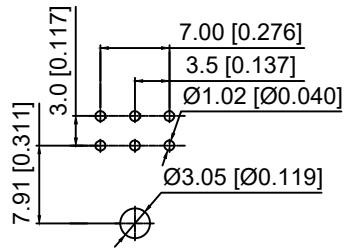
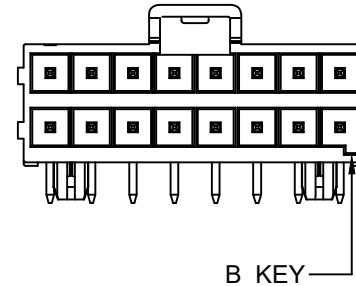
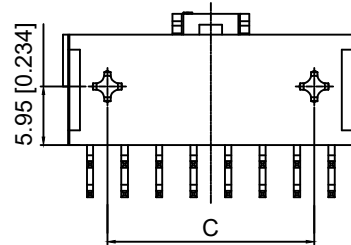


Specifications:
 规格:
 Voltage rating:400V AC/DC
 额定电压: 400V AC/DC
 Current rating:14A AC/DC
 额定电流: 14A AC/DC
 Withstanding voltage:1800V AC/minute
 耐受电压: 1800V AC/分钟
 Temperature range:-40℃-+105℃
 温度范围: -40℃-+105℃
 Insulation resistance:1000MΩ min
 绝缘电阻: 1000MΩ Min
 Contact resistance:15mΩ Max
 接触电阻: 15mΩ Max

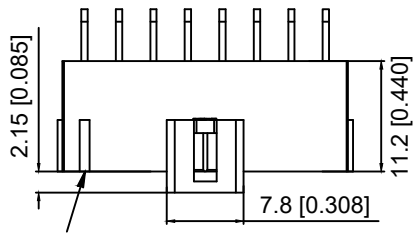


PCB Layout (4-6P)

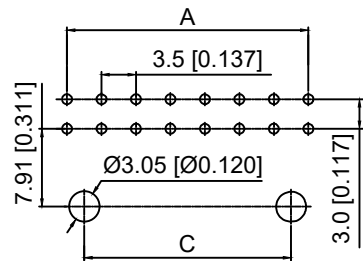


X3501 W R - 2xXX X-LP SN
 ① ② ③ ④ ⑤ ⑥ ⑦

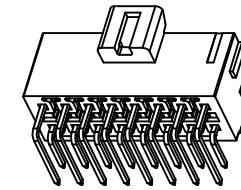
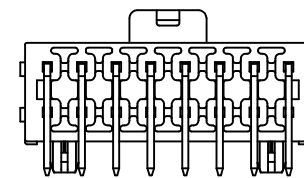
- 1.Series No
- 2.Category:W-Wafer
- 3.Welding Board Angle:R-Stright 90°
- 4.Row No.Pin No:2xXX-2x02~2x08P
- 5.Category:A Key Black ; B Key Nature
- 6.Material:LP-LCP UL94V-0
- 7.Plating:SN-Tin Plated or V01-Gold Flash



First Circuit mark
 (not showing on 4 and 6
 Circuits series)



PCB Layout (8-16P)



Poles	Dimensions		
	A	B	C
2x02	3.50	8.00	/
2x03	7.00	11.50	/
2x04	10.50	15.00	7.00
2x05	14.00	18.50	10.50
2x06	17.50	22.00	14.00
2x07	21.00	25.50	17.50
2x08	24.50	29.00	21.00

X3501WR-2xXXX-LPSN	LCP	Copper Alloy	WR-2xXXA	X3501H-2xXXA / X3501H-2xXXA0
PART NO	Material	Material(Pin)	WR-2xXXB	X3501H-2xXXB / X3501H-2xXXB0
			Category	Suitable XKB Housing

MARK	DESCRIPTION	DATE	REVISED	APPROVED	UNSPECIFIED TOLERANCES
ΔX					ANGLAR ±5°
ΔX					L ≤ 4 ±0.2
ΔX					4 < L ≤ 16 ±0.3
					16 < L ≤ 63 ±0.4
					L > 63 ±0.5



XKB INDUSTRIAL PRECISION CO., LIMITED

DSND	SCALE: N/A	MODEL TYPE: 3.5mm Crimp Style Connector
DWN	VIEW:	PART NO.: X3501WR-2xXXX-LPSN
CHKD	UNIT: mm/in	DWG NO.: X-X3501WR-2xXXX-LPSN
APPD	SIZE: A4	WEIGHT SHEET REVISION 1/1 A0

X-ON Electronics

Largest Supplier of Electrical and Electronic Components

Click to view similar products for [Headers & Wire Housings](#) category:

Click to view products by [XKB](#) manufacturer:

Other Similar products are found below :

[57102-F02-18ULF](#) [58102-G61-06LF](#) [0009485154](#) [009176003701906](#) [0050291907](#) [00-9021-0611-00-339](#) [02.125.8002.8](#) [609-3404](#) [61062-3](#)
[622-0430](#) [622-3653LF](#) [63453-116](#) [636-1030](#) [636-1427](#) [636-3427](#) [636-4007](#) [641938-9](#) [644827-2](#) [65495-038](#) [65692-001LF](#) [65781-018](#)
[65781-047](#) [65817-010LF](#) [65817-015LF](#) [66207-023LF](#) [67016-026LF](#) [67095-007LF](#) [68631-112](#) [68645-018](#) [68648-049](#) [699319-000](#)
[70.362.1628.0](#) [70-4210](#) [70-4226B](#) [70-4853B](#) [707-5020](#) [707-5028](#) [71.350.2428.0](#) [71961-016LF](#) [733-134](#) [754199-000](#) [760-3052](#) [787-8014-00](#)
[FCN-367T-T012/H](#) [80.063.4001.1](#) [800-90-001-10-001000](#) [800-90-010-10-002000](#) [801-43-002-10-013000](#) [801-43-006-10-002000](#)
[803-41-018-10-001000](#)