

For and on behalf of  
**KKB INDUSTRIAL PRECISION CO., LIMITED**  
 香港星坤工業精密有限公司

MARK	DESCRIPTION	DATE	REVISED	APPROVED	UNSPECIFIED TOLERANCES
△ X					L > 63
△ X					16 < L ≤ 63
△ X					4 < L ≤ 16
△ X					L ≤ 4
					ANGULAR
					± 5°

REVISIONS	DATE	REVISED	APPROVED	UNSPECIFIED TOLERANCES
				L > 63
				16 < L ≤ 63
				4 < L ≤ 16
				L ≤ 4
				ANGULAR
				± 5°

REVISION	SHEET	WEIGHT
A0	1/1	1.0g

DATE	SCALE: N/A	MODEL TYPE: X3700WM-02HF-LPSN

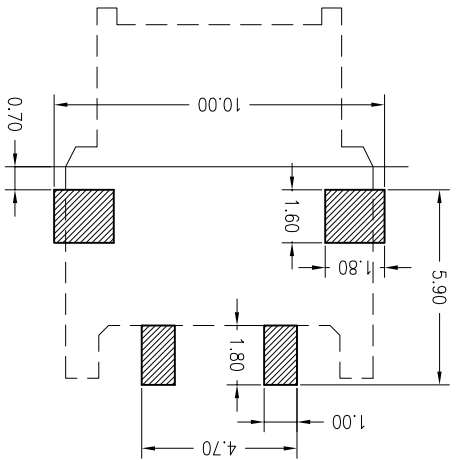
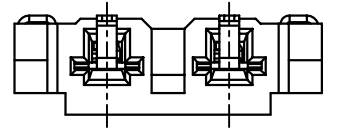
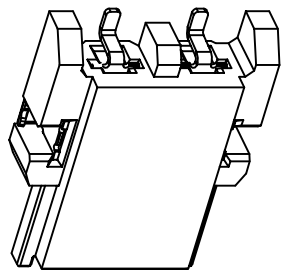
DATE	VIEW:	PART NO.: 3.70mm BTB Style Connectors

DATE	UNIT: mm	DWG NO.:

DATE	SIZE: A4	

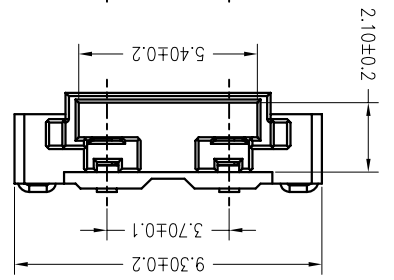
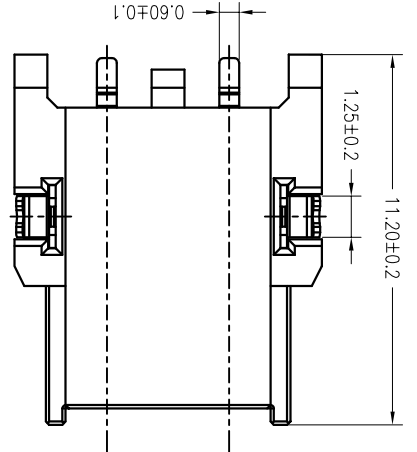
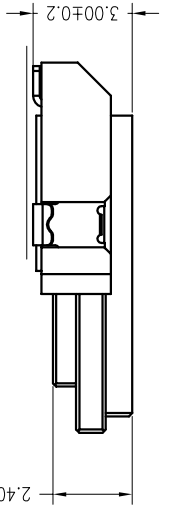
APPD	CHKD	DWN	DSND

PART NO	Material	Material(Pin)	Finish(Pin)	Material (Solder Tab)	Material (Solder Tab)	Finish (Solder Tab)	Mates With
X3700WM-02HF-LPSN	LCP UL 94V-0 Halogen Free	Phosphor Bronze	Tin-Plated	Phosphor Bronze	Tin-Plated	Mate	X3700WF



PCB LAYOUT

SMT 貼面  
 0.1



- Specifications :
- Voltage rating: 500V AC / DC
  - Current rating: 2A AC / DC
  - Withstanding voltage: 1500V AC/minute
  - Temperature range: -40°C~+85°C
  - Insulation resistance: ≥1000MΩ
  - Contact resistance: ≤40mΩ
  - After environmental testing: ≤80mΩ
- ① Series No  
 ② Category: W-WAFER  
 ③ Welding Board Angle: M-Male  
 ④ Row No.-Pin No.: 02-Single Row  
 ⑤ Plug the Pin & Special No.: HF-Halogen Free  
 ⑥ Material: LP-LCP 94V-0  
 ⑦ Plating Category: SN-Bright Tin Plating

X3700 W M-02HF-LPSN

- ①
- ②
- ③
- ④
- ⑤
- ⑥
- ⑦

## X-ON Electronics

Largest Supplier of Electrical and Electronic Components

*Click to view similar products for [Lighting Connectors](#) category:*

*Click to view products by [XKB](#) manufacturer:*

Other Similar products are found below :

[21061-9](#) [293300-7](#) [2106117-2](#) [293660-5](#) [293700-2](#) [CNX\\_H03\\_NTP](#) [30-9767-BU](#) [3-21030-1](#) [ZCH-110-RGB-I](#) [503471-0290](#) [ES5P09K4F2](#)  
[CNXH02NTP](#) [ZCH-110-RGB-J](#) [217-0716-200](#) [192992-0057](#) [1954563-1](#) [217-3030-000](#) [217-3032-000](#) [237-0734-003](#) [DTS24W25-20PN-LC](#)  
[1-2213614-2](#) [2834049-3](#) [ES9S002SZZ](#) [2834049-2](#) [2-2834067-3](#) [1-293657-2](#) [2834049-1](#) [293699-2](#) [293701-3](#) [1-2213614-3](#) [2834036-1](#)  
[2834037-1](#) [2213614-3](#) [2307526-2](#) [2-2106124-3](#) [2-2834068-3](#) [FLS2SC4001BP](#) [FLSC80352000](#) [FLSC80354000](#) [FLSC80353000](#) [FLSSB8002](#)  
[FLSSB8001](#) [FLSC80351000](#) [FLSSB4001](#) [FLSC80504000](#) [FLSC80502000](#) [FLSC80501000](#) [FLSSR4001](#) [X3700WM-02HF-LPSN](#) [FLA-](#)  
[R4142-30](#)