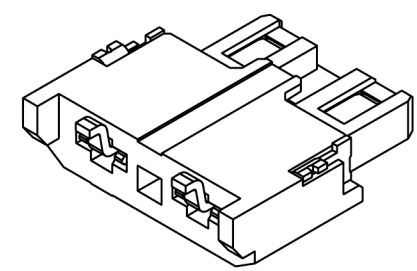


PCB LAYOUT

Specifications:  
 规格:  
 Voltage rating:300V AC/DC  
 额定电压: 300V AC/DC  
 Current rating:3A AC/DC  
 额定电流: 3A AC/DC  
 Withstanding voltage:1700V AC/minute  
 耐受电压: 1700V AC/分钟  
 Temperature range:-40℃~+105℃  
 温度范围: -40℃~+105℃  
 Insulation resistance:1000MΩ min  
 绝缘电阻: 1000MΩ Min  
 Contact resistance:20mΩ Max  
 接触电阻: 20mΩ Max

X4001 W M - 02 - LP SN  
 ① ② ③ ④ ⑤ ⑥

- 1.Series No
- 2.Category:Wafer
- 3.Category:M-Male
- 4.Row No.Pin No:02 Pin
- 5.Material:LP-LCP UL94V-0
- 6.Plating:SN-Tin Plated



Connector Chimerism(Reference)

X4001WM-02-LPSN	LCP	Phosphor Bronze	X4001WF
PART NO	Material	Material	Suitable XKB Female

广东星坤科技股份有限公司

Δ建	日期					ANGLAR	±5°
Δ改						L ≤ 4	±0.2
Δ修						4 < L ≤ 16	±0.3
Δ查						16 < L ≤ 63	±0.4
MARK	DESCRIPTION	DATE	REVISED	APPROVED		L > 63	±0.5
REVISIONS						UNSPECIFIED TOLERANCES	

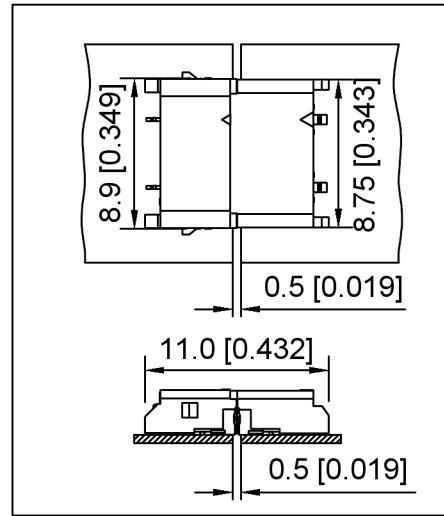
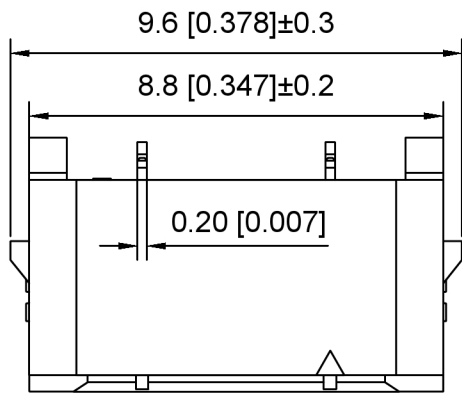
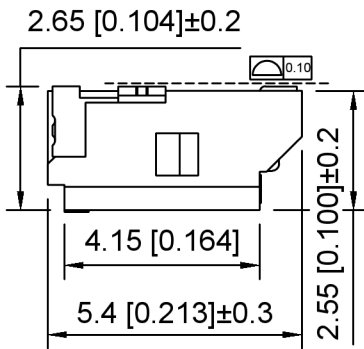
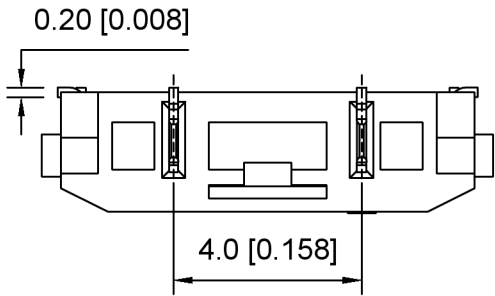


DSND		SCALE: N/A	MODEL TYPE: 4.0mm BTB Connector
DWN		VIEW:	PART NO.: X4001WM-02-LPSN
CHKD		UNIT: mm/in	DWG NO.: X-X4001WM-02-LPSN
APPD		SIZE: A4	

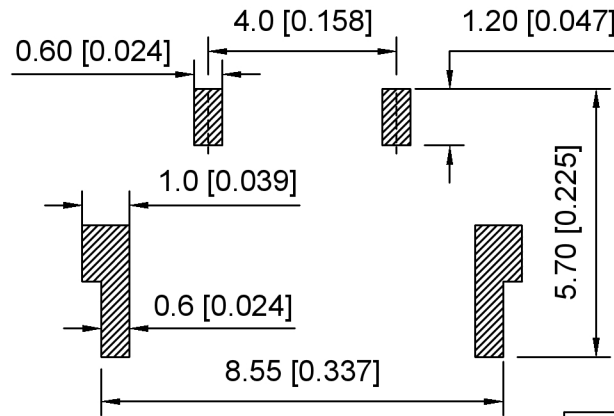
XKB INDUSTRIAL PRECISION CO., LIMITED

WEIGHT	SHEET	REVISION
	1/1	A0

文件工程章



Connector Chimerism(Reference)

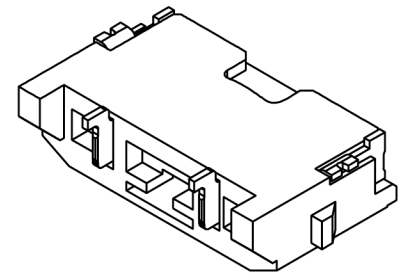


PCB LAYOUT

Specifications:  
 规格:  
 Voltage rating:300V AC/DC  
 额定电压: 300V AC/DC  
 Current rating:3A AC/DC  
 额定电流: 3A AC/DC  
 Withstanding voltage:1700V AC/minute  
 耐受电压: 1700V AC/分钟  
 Temperature range:-40°C-+105°C  
 温度范围: -40°C-+105°C  
 Insulation resistance:1000MΩ min  
 绝缘电阻: 1000MΩ Min  
 Contact resistance:20mΩ Max  
 接触电阻: 20mΩ Max

X4001 W F - 02 - LP SN  
 ① ② ③ ④ ⑤ ⑥

- 1.Series No
- 2.Category:Wafer
- 3.Category:F-Female
- 4.Row No.Pin No:02 Pin
- 5.Material:LP-LCP UL94V-0
- 6.Plating:SN-Tin Plated



X4001WF-02-LPSN	LCP	Phosphor Bronze	X4001WM
PART NO	Material	Material	Suitable XKB Wafer

DSND		SCALE: N/A	MODEL TYPE: 4.0mm BTB Connector
DWN		VIEW:	PART NO.: X4001WF-02-LPSN
CHKD		UNIT: mm/in	DWG NO.: X-X4001WF-02-LPSN
APPD		SIZE: A4	



XKB INDUSTRIAL PRECISION CO.,LIMITED

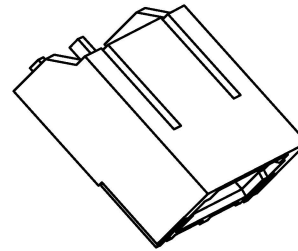
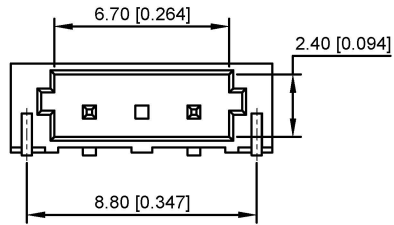
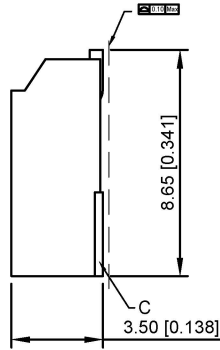
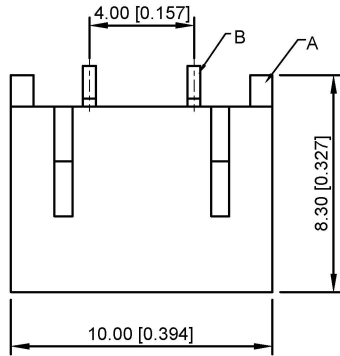
WEIGHT	SHEET	REVISION
	1/1	A0

ANGULAR	±5°
L ≤ 4	±0.2
4 < L ≤ 16	±0.3
16 < L ≤ 63	±0.4
L > 63	±0.5
UNSPECIFIED TOLERANCES	

广东星坤科技股份有限公司

设计	日期
审核	日期
MARK	DESCRIPTION
文件	工程章

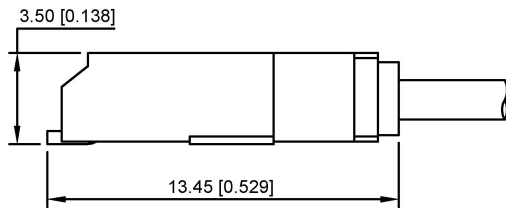
REVISIONS	DATE	REVISED	APPROVED
www.helloxkb.com www.helloxkb.cn www.xk-dg.cn			



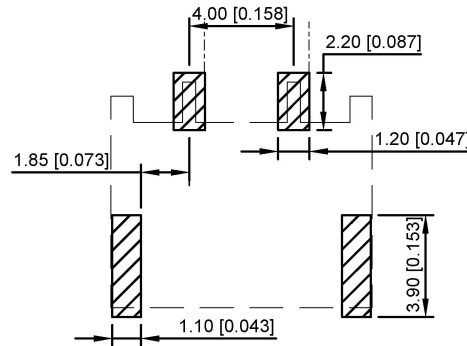
Specifications:  
 Voltage rating: 600V AC/ DC  
 Current rating: 1A AC/DC  
 Withstanding voltage: 1700V AC/minute  
 Temperature range: -55° ~ +105°  
 Insulation resistance: ≥1000MΩ  
 Contact resistance: ≤20mΩ  
 After environmental testing: ≤40mΩ

X4001 W V-02-LP SN  
 ① ② ③ ④ ⑤ ⑥

- ① Series No
- ② Category: W-WAFER
- ③ Welding Board Angle: V-180°
- ④ Row No.-Pin No.: 02P
- ⑤ Material: LP-LCP 94V-0
- ⑥ Plating Category: SN-Bright Tin Plating



Assembly Layout



Board Layout

X4001WF-02-LPSN	LCP UL 94V-0	Phosphor Bronze	Tin-Plated	Brass	Tin-Plated
PART NO	Material	Material(Pin)	Finish(Pin)	Material (Solder Tab)	Finish (Solder Tab)

广东星坤科技股份有限公司

生 日期  
 發 日期  
 Δx

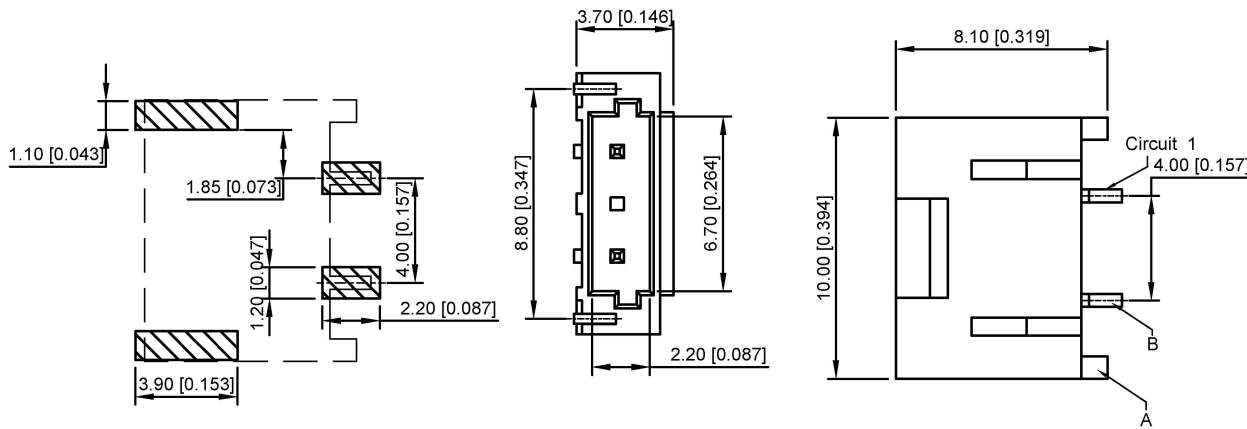
MARK DESCRIPTION REVISIONS  
 文件工程章

www.xk-lq.cn www.helloxkb.com www.helloxkb.cn

ANGULAR	±5°
L ≤ 4	±0.2
4 < L ≤ 16	±0.3
16 < L ≤ 63	±0.4
L > 63	±0.5

UNSPECIFIED TOLERANCES

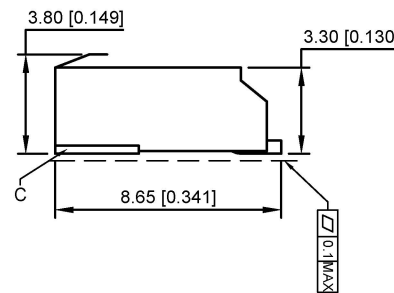
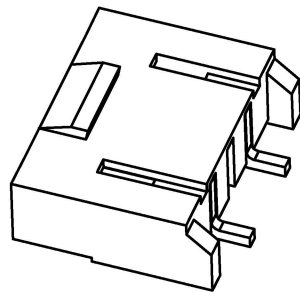
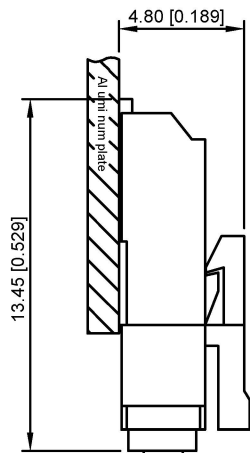
DSND	DATE	SCALE: N/A	MODEL TYPE: X4001WV-02-LPSN
DWN	DATE	VIEW:	PART NO.: 4.00mm BTB Style Connectors
CHKD	DATE	UNIT: mm/in	DWG NO.:
APPD	DATE	SIZE: A4	
KKB INDUSTRIAL PRECISION CO., LIMITED			WEIGHT 1.0g
			SHEET 1/1
			REVISION A0



Specifications:  
 Voltage rating: 600V AC/ DC  
 Current rating: 1A AC/DC  
 Withstanding voltage: 1800V AC/minute  
 Temperature range: -25° □ ~ +105° □  
 Insulation resistance: ≥1000MΩ  
 Contact resistance: ≤20mΩ  
 After environmental testing: ≤40mΩ

X4001 W V-02 L-LP SN  
 ① ② ③ ④ ⑤ ⑥ ⑦

- ① Series No
- ② Category: W-WAFER
- ③ Welding Board Angle: V-180°
- ④ Row No.-Pin No.: 02P
- ⑤ Plug the Pin & Special No.:L-With Lock
- ⑥ Material: LP-LCP 94V-0
- ⑦ Plating Category: SN-Bright Tin Plating



X4001WV-02L-LP SN	LCP UL 94V-0	Phosphor Bronze	Tin-Plated	Brass	Tin-Plated
PART NO	Material	Material(Pin)	Finish(Pin)	Material (Solder Tab)	Finish (Solder Tab)

广东星坤科技股份有限公司

生 日期  
 發 日期  
 ΔX

文件工程章

REVISIONS

www.xk-lq.cn www.helloxkb.com www.helloxkb.cn

ANGULAR	±5°
L ≤ 4	±0.2
4 < L ≤ 16	±0.3
16 < L ≤ 63	±0.4
L > 63	±0.5

UNSPECIFIED TOLERANCES

DSND	DATE	SCALE: N/A
DWN	DATE	VIEW:
CHKD	DATE	UNIT: mm/in
APPD	DATE	SIZE: A4

KKB INDUSTRIAL PRECISION CO., LIMITED

MODEL TYPE: X4001WV-02L-LP SN		
PART NO.: 4.00mm BTB Style Connectors		
DWG NO.:		
WEIGHT 1.0g	SHEET 1/1	REVISION A0

## X-ON Electronics

Largest Supplier of Electrical and Electronic Components

*Click to view similar products for [Headers & Wire Housings](#) category:*

*Click to view products by [XKB](#) manufacturer:*

Other Similar products are found below :

[0015917161](#) [0022155065](#) [57102-F02-18ULF](#) [58102-G61-06LF](#) [582553-1](#) [01.001.5753.1](#) [0050291907](#) [02.125.8002.8](#) [609-3404](#) [61062-3](#)  
[CSU011177004](#) [622-0430](#) [622-3653LF](#) [63453-116](#) [636-1030](#) [636-1427](#) [636-3427](#) [636-4007](#) [641938-9](#) [65495-038](#) [65692-001LF](#) [65781-018](#)  
[65781-047](#) [65817-010LF](#) [65817-015LF](#) [67095-007LF](#) [67601157](#) [68631-112](#) [68645-018](#) [699319-000](#) [70.362.1628.0](#) [70-4210](#) [70-4226B](#) [70-](#)  
[4853B](#) [71.350.2428.0](#) [733-134](#) [733-162](#) [MHR-64-VUAL](#) [80.063.4001.1](#) [800-90-001-10-001000](#) [801-43-002-10-013000](#) [801-43-006-10-](#)  
[002000](#) [803-43-024-10-001000](#) [803-93-012-10-001000](#) [8-1437020-4](#) [819-22-004-30-001101](#) [820-22-006-30-001101](#) [820-22-008-30-001101](#)  
[821-22-002-10-001101](#) [821-22-003-10-002101](#)