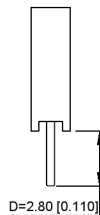


- 规格 Specifications:
- 额定电压 Voltage rating: 250VAC/DC.
- 额定电流 Current rating: 2A AC/DC
- 耐电压 Withstanding voltage: 1000V AC/minute
- 温度区间 Temperature range: -40°C to +105°C
- 绝缘电阻 Insulation resistance: ≥ 1000MΩ Min
- 接触电阻 Contact resistance: ≤ 20MΩ Max
- 材料 Material: PA6T 94V-0
- 镀层 Plating Category: 1U"Gold
- 波峰焊温度 Wave soldering temperature: 255±5°C 10s

X4611 F V- XX - C43 D28

① ② ③ ④ ⑤ ⑥

- ① Series No.
- ② Category: F-Female
- ③ Welding Board Angle: V-Stright 180°
- ④ Row No -Pin No: XX-01P-40P
- ⑤ Plastic height: C=4.3mm
- ⑥ Pin length: D=2.8mm



| | | | | |
|-------------------|------------|---------------|-------------|-----------------------|
| X4611FV-XX-C43D28 | PA6T 94V-0 | Brass | 1U"Gold | X4611W |
| PART NO | Material | Material(Pin) | Finish(Pin) | Suitable XKB Terminal |

广东星坤科技股份有限公司 P.C.B LAYOUT XKB Connectivity

| | |
|-------|----|
| 生 | 日期 |
| 發 | |
| Δ | |
| 文件工程章 | |

REVISIONS

| NO. | DATE | REVISED | APPROVED |
|-----|------|---------|----------|
| | | | |

UNSPECIFIED TOLERANCES

www.xkb.cn www.hellixkb.com www.hellixkb.cn

| | | | |
|---------------------------------------|------|-------------|-------------------------------|
| DSND | DATE | SCALE: N/A | MODEL TYPE: X4611FV-XX-C43D28 |
| DWNN | DATE | VIEW: | PART NO.: |
| CHKD | DATE | UNIT: mm/in | 2.00mm Crimp Style Connector |
| APPD | DATE | SIZE: A4 | DWG NO.: |
| XKB INDUSTRIAL PRECISION CO., LIMITED | | | WEIGHT: 1.0g |
| | | | SHEET: 1/1 |
| | | | REVISION: A0 |

X-ON Electronics

Largest Supplier of Electrical and Electronic Components

Click to view similar products for [Headers & Wire Housings](#) category:

Click to view products by [XKB](#) manufacturer:

Other Similar products are found below :

[57102-F02-18ULF](#) [58102-G61-06LF](#) [582553-1](#) [009176003701906](#) [01.001.5753.1](#) [0050291907](#) [02.125.8002.8](#) [609-3404](#) [61062-3](#)
[CSU011177004](#) [622-0430](#) [622-3653LF](#) [63453-116](#) [636-1030](#) [636-1427](#) [636-3427](#) [636-4007](#) [641938-9](#) [644827-2](#) [65495-038](#) [65692-001LF](#)
[65781-018](#) [65781-047](#) [65817-010LF](#) [65817-015LF](#) [66207-023LF](#) [67095-007LF](#) [67601157](#) [68631-112](#) [68645-018](#) [699319-000](#)
[M90C108951C](#) [70.362.1628.0](#) [70-4210](#) [70-4226B](#) [70-4853B](#) [707-5028](#) [71.350.2428.0](#) [71961-016LF](#) [733-134](#) [733-162](#) [754199-000](#) [760-](#)
[3052](#) [80.063.4001.1](#) [800-90-001-10-001000](#) [800-90-010-10-002000](#) [801-43-002-10-013000](#) [801-43-006-10-002000](#) [803-41-018-10-001000](#)
[803-43-024-10-001000](#)