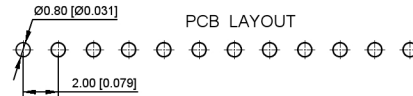
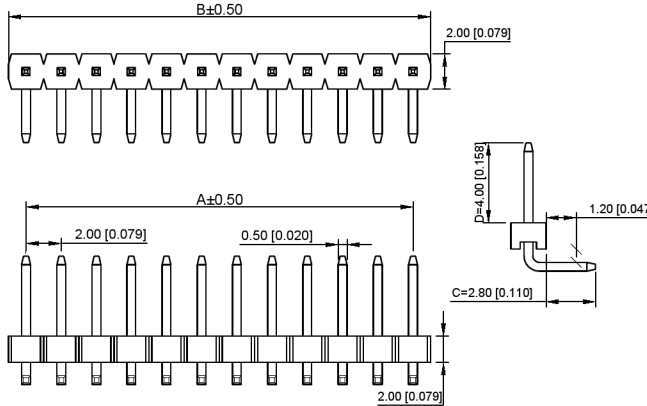


| Pin数 | 尺寸A | 尺寸B |
|------|-----|-----|
| 1    |     | 2   |
| 2    | 2   | 4   |
| 3    | 4   | 6   |
| 4    | 6   | 8   |
| 5    | 8   | 10  |
| 6    | 10  | 12  |
| 7    | 12  | 14  |
| 8    | 14  | 16  |
| 9    | 16  | 18  |
| 10   | 18  | 20  |
| 11   | 20  | 22  |
| 12   | 22  | 24  |
| 13   | 24  | 26  |
| 14   | 26  | 28  |
| 15   | 28  | 30  |
| 16   | 30  | 32  |
| 17   | 32  | 34  |
| 18   | 34  | 36  |
| 19   | 36  | 38  |
| 20   | 38  | 40  |
| 21   | 40  | 42  |
| 22   | 42  | 44  |
| 23   | 44  | 46  |
| 24   | 46  | 48  |
| 25   | 48  | 50  |
| 26   | 50  | 52  |
| 27   | 52  | 54  |
| 28   | 54  | 56  |
| 29   | 56  | 58  |
| 30   | 58  | 60  |
| 31   | 60  | 62  |
| 32   | 62  | 64  |
| 33   | 64  | 66  |
| 34   | 66  | 68  |
| 35   | 68  | 70  |
| 36   | 70  | 72  |
| 37   | 72  | 74  |
| 38   | 74  | 76  |
| 39   | 76  | 78  |
| 40   | 78  | 80  |



XXB Connectivity

规格 Specifications:

- 额定电压 Voltage rating:250VAC/DC.
- 额定电流 Current rating:3A AC/DC
- 耐电压 Withstanding voltage:1000V AC/minute
- 温度区间 Temperature range:-40°C to+105°C
- 绝缘电阻 Insulation resistance:≥1000MΩ Min
- 接触电阻 Contact resistance:≤20MΩ Max
- 材料 Material: PA6T 94V-0
- 镀层 Plating Category: 1U"Gold
- 颜色 Color:Blank-Natural color

XXB Connectivity

X4611 W-R-XX I- C28 D40

① ② ③ ④ ⑤ ⑥ ⑦

- ① Series No.
- ② Category:W-wafer
- ③ Welding Board Angle:R-Stright 90°
- ④ Row No -Pin No:XX-01P-40P
- ⑤ Plastic height:| =2.0mm
- ⑥ Pin length:C=2.8mm
- ⑦ Pin length:D=4.0mm

XXB Connectivity

| PART NO            | Material   | Material(Pin) | Finish(Pin) | Suitable XXB Terminal |
|--------------------|------------|---------------|-------------|-----------------------|
| X4611WR-XXI-C28D40 | PA6T 94V-0 | Brass         | 1U"Gold     | X4611WF               |

广东星坤科技股份有限公司

生 日期

文件工程章

| REVISIONS   | DATE | REVISED | APPROVED | UNSPECIFIED TOLERANCES |
|-------------|------|---------|----------|------------------------|
| ANGLAR      |      |         |          | ±5°                    |
| L ≤ 4       |      |         |          | ±0.2                   |
| 4 < L ≤ 16  |      |         |          | ±0.3                   |
| 16 < L ≤ 63 |      |         |          | ±0.4                   |
| L > 63      |      |         |          | ±0.5                   |

| DSND                                  | DATE | SCALE: NA   | MODEL TYPE:                               |
|---------------------------------------|------|-------------|---|
| DWN                                   | DATE | VIEW:       | X4611WR-XXI-C28D40                        |
| CHKD                                  | DATE | UNIT: mm/in | PART NO.:<br>2.00mm Crimp Style Connector |
| APPD                                  | DATE | SIZE: A4    | DWG NO.:                                  |
| XXB INDUSTRIAL PRECISION CO., LIMITED |      |             | WEIGHT SHEET REVISION<br>1.0g 1/1 A0      |

## X-ON Electronics

Largest Supplier of Electrical and Electronic Components

*Click to view similar products for [Headers & Wire Housings](#) category:*

*Click to view products by [XKB](#) manufacturer:*

Other Similar products are found below :

[57102-F02-18ULF](#) [58102-G61-06LF](#) [0009485154](#) [009176003701906](#) [0050291907](#) [02.125.8002.8](#) [609-3404](#) [61062-3](#) [622-0430](#) [622-3653LF](#)  
[63453-116](#) [636-1030](#) [636-1427](#) [636-3427](#) [636-4007](#) [641938-9](#) [644827-2](#) [65495-038](#) [65692-001LF](#) [65781-018](#) [65781-047](#) [65817-010LF](#)  
[65817-015LF](#) [66207-023LF](#) [67016-026LF](#) [67095-007LF](#) [68631-112](#) [68645-018](#) [68648-049](#) [699319-000](#) [70.362.1628.0](#) [70-4210](#) [70-4226B](#)  
[70-4853B](#) [707-5020](#) [707-5028](#) [71.350.2428.0](#) [71961-016LF](#) [733-134](#) [754199-000](#) [760-3052](#) [787-8014-00](#) [FCN-367T-T012/H](#) [80.063.4001.1](#)  
[800-90-001-10-001000](#) [800-90-010-10-002000](#) [801-43-002-10-013000](#) [801-43-006-10-002000](#) [803-41-018-10-001000](#) [803-43-014-20-](#)  
[001000](#)