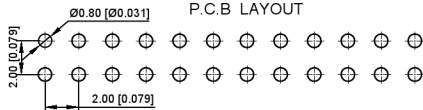
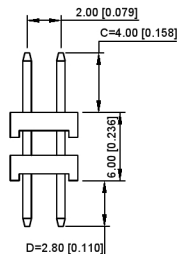
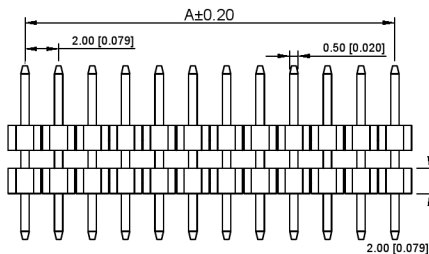
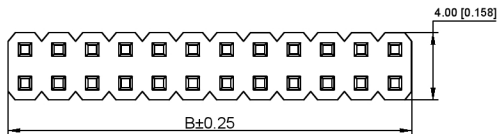


| Pin数 | 尺寸A | 尺寸B |
|------|-----|-----|
| 1 | | 2 |
| 2 | 2 | 4 |
| 3 | 4 | 6 |
| 4 | 6 | 8 |
| 5 | 8 | 10 |
| 6 | 10 | 12 |
| 7 | 12 | 14 |
| 8 | 14 | 16 |
| 9 | 16 | 18 |
| 10 | 18 | 20 |
| 11 | 20 | 22 |
| 12 | 22 | 24 |
| 13 | 24 | 26 |
| 14 | 26 | 28 |
| 15 | 28 | 30 |
| 16 | 30 | 32 |
| 17 | 32 | 34 |
| 18 | 34 | 36 |
| 19 | 36 | 38 |
| 20 | 38 | 40 |
| 21 | 40 | 42 |
| 22 | 42 | 44 |
| 23 | 44 | 46 |
| 24 | 46 | 48 |
| 25 | 48 | 50 |
| 26 | 50 | 52 |
| 27 | 52 | 54 |
| 28 | 54 | 56 |
| 29 | 56 | 58 |
| 30 | 58 | 60 |
| 31 | 60 | 62 |
| 32 | 62 | 64 |
| 33 | 64 | 66 |
| 34 | 66 | 68 |
| 35 | 68 | 70 |
| 36 | 70 | 72 |
| 37 | 72 | 74 |
| 38 | 74 | 76 |
| 39 | 76 | 78 |
| 40 | 78 | 80 |



XXB Connectivity
P.C.B LAYOUT

XXB Connectivity

■ 规格 Specifications:

- 额定电压 Voltage rating:250VAC/DC。
- 额定电流 Current rating:3A AC/DC
- 耐电压 Withstanding voltage:1000V AC/minute
- 温度区间 Temperature range:-40℃to+105℃
- 绝缘电阻 Insulation resistance:≥1000MQ Min
- 接触电阻 Contact resistance:≤20MQ Max
- 材料 Material: PA6T 94V-0
- 镀层 Plating Category: 1U"Gold
- 颜色 Color: Blank-Natural color

XXB Connectivity

X4622 W V-2*XX I- C40 D28
① ② ③ ④ ⑤ ⑥ ⑦

- ① Series No.
- ② Category:W-Wafer
- ③ Welding Board Angle:V-Stright 180°
- ④ Row No.-Pin No.:2*XX-2*01P-40P
- ⑤ Plastic height:l=2.0mm
- ⑥ Plastic length:C=4.0mm
- ⑦ Plastic length:D=2.8mm

XXB Connectivity

| DSND | DATE | SCALE: N/A | MODEL TYPE: X4622WV-2*XXI-C40D28 |
|----------------------|------------|---------------|-------------------------------------|
| X4622WV-2*XXI-C40D28 | PART 94V-0 | Brass | 1U"Gold |
| PART NO | Material | Material(Pin) | Finish(Pin) |
| | | | Suitable XXB Terminal |

广东星坤科技股份有限公司

生 日期

文件工程章

REVISIONS

www.xxkb.cn www.helloxxb.com www.helloxxb.cn

| ANGLAR | ±5° |
|-------------|------|
| L ≤ 4 | ±0.2 |
| 4 < L ≤ 16 | ±0.3 |
| 16 < L ≤ 63 | ±0.4 |
| L > 63 | ±0.5 |

UNSPECIFIED TOLERANCES

| DSND | DATE | SCALE: N/A | MODEL TYPE: X4622WV-2*XXI-C40D28 |
|--------------------------------------|------|-------------|-------------------------------------|
| DWNN | DATE | VIEW: | PART NO.: |
| CHKD | DATE | UNIT: mm/in | 2.00mm Crimp Style Connector |
| APPD | DATE | SIZE: A4 | DWG NO.: |
| XXB INDUSTRIAL PRECISION CO.,LIMITED | | | WEIGHT |
| | | | 1.0g |
| | | | SHEET |
| | | | 1/1 |
| | | | REVISION |
| | | | A0 |

X-ON Electronics

Largest Supplier of Electrical and Electronic Components

Click to view similar products for [Headers & Wire Housings](#) category:

Click to view products by [XKB](#) manufacturer:

Other Similar products are found below :

[57102-F02-18ULF](#) [58102-G61-06LF](#) [0009485154](#) [009176003701906](#) [0050291907](#) [02.125.8002.8](#) [609-3404](#) [61062-3](#) [622-0430](#) [622-3653LF](#)
[63453-116](#) [636-1030](#) [636-1427](#) [636-3427](#) [636-4007](#) [641938-9](#) [644827-2](#) [65495-038](#) [65692-001LF](#) [65781-018](#) [65781-047](#) [65817-010LF](#)
[65817-015LF](#) [66207-023LF](#) [67016-026LF](#) [67095-007LF](#) [68631-112](#) [68645-018](#) [68648-049](#) [699319-000](#) [70.362.1628.0](#) [70-4210](#) [70-4226B](#)
[70-4853B](#) [707-5020](#) [707-5028](#) [71.350.2428.0](#) [71961-016LF](#) [733-134](#) [754199-000](#) [760-3052](#) [787-8014-00](#) [FCN-367T-T012/H](#) [80.063.4001.1](#)
[800-90-001-10-001000](#) [800-90-010-10-002000](#) [801-43-002-10-013000](#) [801-43-006-10-002000](#) [803-41-018-10-001000](#) [803-43-014-20-](#)
[001000](#)