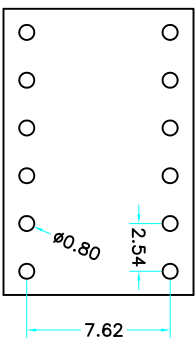
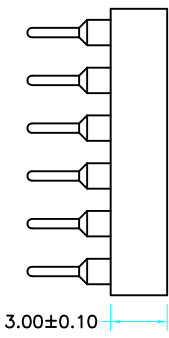
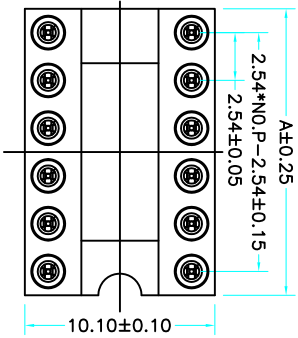
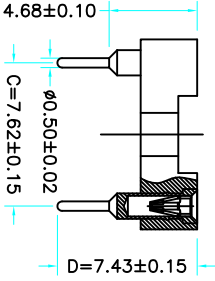


Poles Dimensions(mm)

Poles	Dimensions(mm)
2*02	5.08
2*03	7.62
2*04	10.16
2*05	12.70
2*06	15.24
2*07	17.78
2*08	20.32
2*09	22.86
2*10	25.40
2*12	30.48
2*14	35.56
2*16	40.64
2*20	50.80
2*21	53.34
2*24	60.96
2*25	63.50



Recommended P.C.B
Layout (±0.05)



Technical Data
 Pin(outer sleeve):Brass,machined CuZn38Pb2
 Clip(Contact 4 Finger):Beryllium copper,heat treated
 Insulator:PBT UL94V-0 colour:black
 Tin Plated:2um/80u"Ni,5um/200u"Sn
 Gold Plated:2um"/80u"Ni,GF
 Current rating:3Amps
 Contact resistance:max 10m Ω
 Dielectric strength:min 1000V RMS
 Operating temperature:-40° C to+105° C

X5621 F V-2*XX-C762 D7430

- ① Series: NO.
- ② Category : F-Female
- ③ Welding Board Angle : V-Straight 180°
- ④ Row No-Pin No:2*XX-03,04,05,06,07,08,09,10,12,14,16, 20,21,24,25
- ⑤ Plastic Height :C=7.62mm
- ⑥ Pin Length :D:7430=7.43mm;0420=4.2mm;0740=7.40mm; 1390=13.9mm;92=9.20mm;1020=10.20mm;1120=11.20mm; 1150=11.50mm;1170=11.70;1220=12.20mm;1340=13.40mm 1370=13.70mm;1420=14.20mm;1520=15.20mm;1620-16.20mm 1780=17.80mm;1820=18.20mm

X5621FV-2*XX-C762D7430	PBT 94V-0	Brass	Tin Gold 1u"	X5621F
PART NO	Material	Material(Terminal)	Finish(Terminal)	Mates With XKB Pin Header

MARK	DESCRIPTION	REVISIONS	DATE	REVISED	APPROVED	UNSPECIFIED TOLERANCES	DSND	DATE	SCALE: N/A	MODEL TYPE:
ΔX						ANGULAR	±5°			
ΔX						L ≤ 4	±0.2	DWN	VIEW: ①	PART NO.:
ΔX						4<L≤ 16	±0.3	CHKD	UNIT: mm	DWG NO.:
ΔX						16<L≤ 63	±0.4	APPD	SIZE: A4	X5621FV-2*XX-C762D7430
						L > 63	±0.5			WEIGHT
										1.0g
										SHEET
										1/1
										REVISION
										A0

X-ON Electronics

Largest Supplier of Electrical and Electronic Components

Click to view similar products for [XKB](#) manufacturer:

Other Similar products are found below :

[A32-099A-111](#) [A37-1BL01-111-A](#) [A37-1BL01-111-B](#) [A71-05H3-111N1](#) [A71-05H4-111N1](#) [A71-05H5-111N1](#) [A71-05H5-151N1](#) [A71-05H6-111N1](#) [A71-05H7-111N1](#) [A71-05H8-111N2](#) [A71-05H9-111N1](#) [A71-06H0-111N1](#) [AX.ZBN.M12.P04.MPL.PBA24L1000.T5](#) [AX.ZLN.M12.P05.MPL.PBA24L1000.T5](#) [AX.ZLN.M12.P08.MPL.PBA26L1000.T5](#) [AX.ZLN.M12.P12.MPL.PBA26L1000.T5](#) [C3030HM-2x10-N2](#) [CAR06-201EN5F](#) [CAR06-201EN5S](#) [DA-01BLP](#) [DA-01RP](#) [DA-02BLP](#) [DA-02RP](#) [DA-03BLP](#) [DA-03RP](#) [DA-04BLP](#) [DA-04RP](#) [DA-05BLP](#) [DA-05RP](#) [DA-06BLP](#) [DA-06RP](#) [DA-07BLP](#) [DA-07RP](#) [DA-08BLP](#) [DA-08RP](#) [DA-09BLP](#) [DA-09RP](#) [DA-10BLP](#) [DA-10RP](#) [DA-12BLP](#) [DA-12RP](#) [DC-002-2.0A-1.0](#) [DC-002-2.0A-1.3](#) [DC-002-2.0A-1.65](#) [DC-002CB-2.0A-1.3](#) [DC-002H-1.65](#) [DC-002H-2.5A-1.3](#) [DC-002H-2.5A-1.65](#) [DC-003-2A-1.0](#) [DC-003-2A-1.3](#)