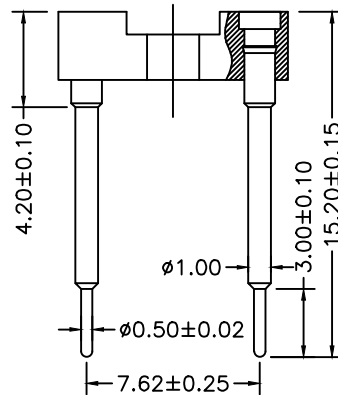


Recommended P.C.B  
Layout(±0.05)



XKB Connectivity

Technical Data

Pin(outer sleeve):Brass,machined CuZn38Pb2  
 ClIp(Contact 4 Finger):Beryllium copper,heat teated  
 Insulator:PBT UL94V-0 colour:black  
 Current rating:3Amps  
 Mating pin Ø:0.38/0.56mm  
 Forces:(polished steel gaugeØ0.43mm)  
 -Insertion:2N typ  
 -Withdrawal:1N typ  
 Mechanical life:min 500cycles  
 Contact resistance:max 10m Ω  
 Dielectric strength:min 1000V RMS  
 Operating temperature:-40°C to+105°C  
 Soldering temperature:+255°C

XKB Connectivity

X5621 F V-2xXX -C30 D1520

- ①
- ②③④
- ⑤
- ⑥

- ① Series.N0.
- ② Category : F-Female
- ③ Welding Board Angle : V-Straight 180°
- ④ Row No-Pin No:2xXX-2x01P-2xXXP
- ⑤ Pin Length :C=3.0mm
- ⑥ Pin Length :D:15.20mm

XKB Connectivity

X5621FV-2xXX-C30D1520	PBT 94V-0	Brass	Tin Gold 1u'	X5621W
PART NO	Material	Material(Terminal)	Finish(Terminal)	Mates With XKB Pin Header

						DSND		DATE		SCALE: N/A	MODEL TYPE: X5621FV-2xXX-C30D1520	
Δx					ANGLAR			DATE		VIEW:	PART NO.:	
Δx					L ≤ 4	±5°		DATE		UNIT: mm/in	DWG NO.:	
Δx					4 < L ≤ 16	±0.2		DATE		SIZE: A4		
Δx					16 < L ≤ 63	±0.3		DATE				
MARK	DESCRIPTION	DATE	REVISED	APPROVED	L > 63	±0.4		DATE				
REVISIONS						UNSPECIFIED TOLERANCES		XKB INDUSTRIAL PRECISION CO.,LIMITED				WEIGHT
www.xk-dg.cn www.helloxkb.com www.helloxkb.cn												SHEET
												1/1
												REVISION
												A0

## X-ON Electronics

Largest Supplier of Electrical and Electronic Components

*Click to view similar products for [XKB](#) manufacturer:*

Other Similar products are found below :

[TC-FS66D-C-A](#) [X0800WRS-06HF-LPV01](#) [U221-046N-4BU02-FS](#) [U263-241N-4BQC13](#) [X6511WVS-12H-C60D48R2](#) [X6511WR-10H-C30D60R2](#) [USB31-TYPE-C-FSABC](#) [X0515WVS-60AS-9TV01](#) [K828801H-2x11-N0](#) [X6511FRS-05-C85D30](#) [X2513WR-2x06A-LPSN](#) [PJ-3026](#) [TS-1101S-C-B-B-B](#) [XKB5858-Z-75](#) [SK-3390A-L1](#) [X3025WV-2x01-46SN](#) [TC-1102T-B](#) [X0800WRS-05HF-LPV01](#) [X1502WR-13K-N0SN](#) [U261-2422N-4B0178](#) [X6511WR-04H-C30D60R2](#) [X9821WVS-16-9TSN](#) [X6511WR-03H-C30D60R2](#) [X1311FVS-05-C43D35R2](#) [X1311FR-02-C43D24](#) [X9821H-05A-N0](#) [X1311WV-12J-C18D27](#) [X1311WVS-03J-C40D42R1](#) [X0815FVS-40BS-9TV01](#) [X1270H-PTV01-A30G50-X1270H-PTV01-IDC](#) [TC-1102-A-L-B](#) [TM-8764-1](#) [SS-13D75L3](#) [X9821H-12A-N0](#) [X1321FVS-2x18-C43D48](#) [X1311FVS-04-C43D35R1](#) [X1002WRS-04B-6TSN](#) [TGG.2B.P03.CLAD92H](#) [ZGG.0T.P03.CLL](#) [ZGG.1B.P02.CLL](#) [TGG.0T.P04.CLAC50](#) [ZGG.2B.P03.CLL](#) [ZGG.0T.P04.CLL](#) [X0725FT7BL1-A28G25-X9555H2-PTV01-IDC](#) [X1270H-PTV01-A30G40-X1270H-PTV01-IDC](#) [PCS.1S.120.CTLC52H](#) [X9555HI-PTAuN-A28G20-X9555H3-PTV01-IDC](#) [XKSIM-011B-P8-B](#) [X9821WRS-04-9TSN](#) [TS-1103S-C-K](#)