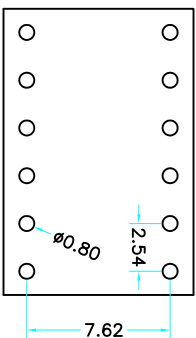
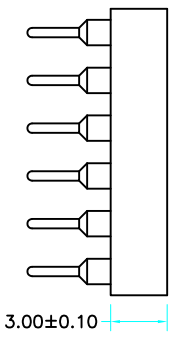
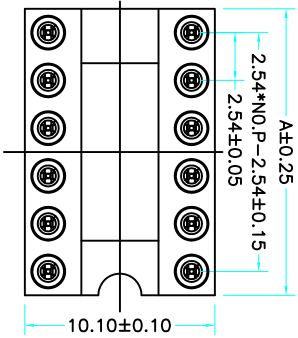
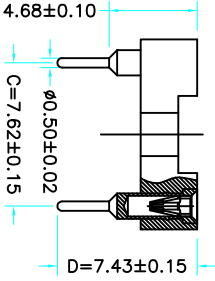


Poles Dimensions(mm)

Poles	Dimensions(mm)
2*02	5.08
2*03	7.62
2*04	10.16
2*05	12.70
2*06	15.24
2*07	17.78
2*08	20.32
2*09	22.86
2*10	25.40
2*12	30.48
2*14	35.56
2*16	40.64
2*20	50.80
2*21	53.34
2*24	60.96
2*25	63.50



Recommended P.C.B
Layout (±0.05)



Technical Data
 Pin(outer sleeve):Brass,machined CuZn38Pb2
 Clip(Contact 4 Finger):Beryllium copper,heat treated
 Insulator:PBT UL94V-0 colour:black
 Tin Plated:2um/80u"Ni,5um/200u"Sn
 Gold Plated:2um"/80u"Ni,GF
 Current rating:3Amps
 Contact resistance:max 10m Ω
 Dielectric strength:min 1000V RMS
 Operating temperature:-40° C to+105° C

X5621 F V-2*XX-C762 D7430

- ① Series: NO.
- ② Category : F-Female
- ③ Welding Board Angle : V-Straight 180°
- ④ Row No-Pin No:2*XX-03,04,05,06,07,08,09,10,12,14,16, 20,21,24,25
- ⑤ Plastic Height :C=7.62mm
- ⑥ Pin Length :D:7430=7.43mm;0420=4.2mm;0740=7.40mm; 1390=13.9mm;92=9.20mm;1020=10.20mm;1120=11.20mm; 1150=11.50mm;1170=11.70;1220=12.20mm;1340=13.40mm 1370=13.70mm;1420=14.20mm;1520=15.20mm;1620-16.20mm 1780=17.80mm;1820=18.20mm

X5621FV-2*XX-C762D7430	PBT 94V-0	Brass	Tin Gold 1u"	X5621F
PART NO	Material	Material(Terminal)	Finish(Terminal)	Mates With XKB Pin Header

MARK	DESCRIPTION	REVISIONS	DATE	REVISED	APPROVED	UNSPECIFIED TOLERANCES	DSND	DATE	SCALE: N/A	MODEL TYPE:
ΔX						ANGULAR	±5°			
ΔX						L ≤ 4	±0.2	DWN	VIEW: ①	PART NO.:
ΔX						4<L≤ 16	±0.3	CHKD	UNIT: mm	DWG NO.:
ΔX						16<L≤ 63	±0.4	APPD	SIZE: A4	X5621FV-2*XX-C762D7430
						L > 63	±0.5			WEIGHT
										1.0g
										SHEET
										1/1
										REVISION
										A0

www.xk-dg.cn www.hellokcb.com www.hellokcb.cn

X-ON Electronics

Largest Supplier of Electrical and Electronic Components

Click to view similar products for [IC & Component Sockets](#) category:

Click to view products by [XKB](#) manufacturer:

Other Similar products are found below :

[614-DG5](#) [673](#) [712-93-120-41-001000](#) [714-93-104-31-018000](#) [8-1437531-4](#) [8150-6P10](#) [835-43-014-10-001000](#) [851-41-006-10-001000](#)
[851-43-008-20-001000](#) [851-43-014-20-001000](#) [851-93-006-20-001000](#) [851-93-010-20-001000](#) [853-43-020-10-001000](#) [86.010.0053.0](#)
[116-43-308-41-007000](#) [121-13-318-41-001000](#) [121-13-320-41-001000](#) [121-13-308-41-001000](#) [123-43-314-41-801000](#) [123-87-320-41-001101](#)
[122-13-316-41-001000](#) [123-13-624-41-001000](#) [123-43-306-41-001000](#) [12-3513-11](#) [126-43-310-41-002000](#) [AKSUN 37V-T](#) [1437503-9](#)
[1437504-1](#) [APA-624-G-A1](#) [APA-640-G-P](#) [146-44-308-41-013000](#) [146-43-308-41-012000](#) [160-10-308-00-001000](#) [160-40-320-00-001000](#) [2-](#)
[382761-4](#) [2-5331677-4](#) [2-640360-3](#) [2801-3-00-44-00-00-07-0](#) [940-44-052-17-400004](#) [299-83-314-11-001101](#) [1986000-2](#) [2103331641101000](#)
[210-43-320-41-001000](#) [210-99-628-41-001000](#) [2-1437504-6](#) [2-1437515-5](#) [2-1437531-2](#) [214-AG19D](#) [22-28-4014](#) [232-1270-01-0602](#)