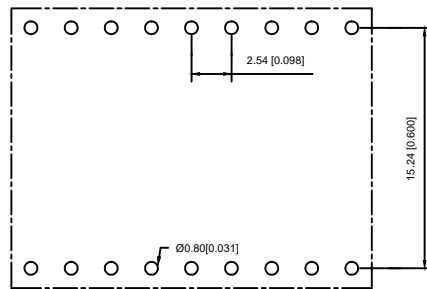
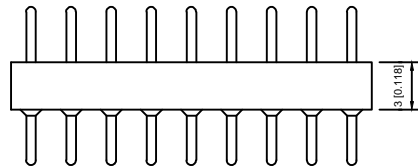
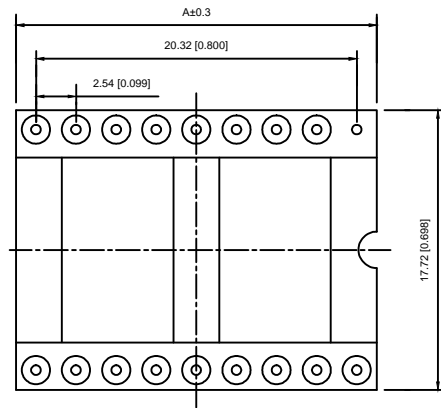
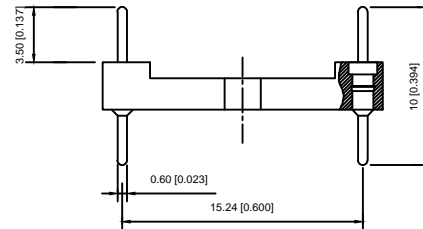


Poles	Dimenslons(mm) A
2*02	5.08
2*03	7.62
2*04	10.16
2*05	12.70
2*06	15.24
2*07	17.78
2*08	20.32
2*09	22.86
2*10	25.40
2*12	30.48
2*14	35.56
2*16	40.64
2*20	50.80
2*21	53.34
2*24	60.96
2*25	63.50



Recommended P.C.B  
Layout(±0.05)



### Technical Data

Pin(outer sleeve):Brass,machined CuZn38Pb2  
 Cllp(Contact 4 Finger):Beryllium copper,heat teated  
 Insulator:PPS UL94V-0 colour:black  
 Current rating:3Amps  
 Maring pin Ø:0.6mm  
 Mechanical life:min 500cycles  
 Contact resistance:max 10m Ω  
 Dielectric strength:min 1000V RMS  
 Operating temperature:-40°C to+105°C  
 Soldering temperature:+255 °C

### X5621W V-2\*XX-C1524 D1000

- ① ② ③ ④ ⑤ ⑥

- ① Series.NO.
- ② Category : W-Wafer
- ③ Welding Board Angle : V-Straight 180°
- ④ Row No-Pin No:2\*XX-03,04,05,06,07,08,09,10,12,14,16 20,21,24,25
- ⑤ Plastic Height :C=15.24mm
- ⑥ Pin Length :D:1220=12.20mm;42=4.2mm;74=7.40mm;  
 7.43=7.43mm;1000=10.0mm;1020=10.20mm;1120=11.20mm;  
 1150=11.50mm;1170=11.70;1390=13.90mm;1340=13.40mm  
 1370=13.70mm;1420=14.20mm;1520=15.20mm;1620=16.20mm  
 1780=17.80mm;1820=18.20mm

X5621WV-2*XX-C1524D1000	PPS 94V-0	Brass	Tin Gold 1u"	X5621F
PART NO	Material	Material(Terminal)	Finish(Terminal)	Mates With XKB Pin Header

DSND	DATE	SCALE: N/A	MODEL TYPE:
DWN	DATE	VIEW:	PART NO.:
CHKD	DATE	UNIT: mm	DWG NO.:
APPD	DATE	SIZE: A4	X5621WV-2*XX-C1524D1000
XKB INDUSTRIAL PRECISION CO.,LIMITED			WEIGHT 1.0g
			SHEET 1/1
			REVISION A0

MARK	DESCRIPTION	DATE	REVISED	APPROVED	UNSPECIFIED TOLERANCES
ΔX					ANGLAR ±5°
ΔX					L ≤ 4 ±0.2
ΔX					4 < L ≤ 16 ±0.3
					16 < L ≤ 63 ±0.4
					L > 63 ±0.5
REVISIONS					
www.xk-dg.cn www.helloxkb.com www.helloxkb.cn					

## X-ON Electronics

Largest Supplier of Electrical and Electronic Components

*Click to view similar products for [IC & Component Sockets](#) category:*

*Click to view products by [XKB](#) manufacturer:*

Other Similar products are found below :

[614-DG5](#) [670](#) [672](#) [673](#) [712-93-120-41-001000](#) [714-93-104-31-018000](#) [8-1437531-4](#) [8150-6P10](#) [835-43-014-10-001000](#) [851-41-006-10-001000](#) [851-43-008-20-001000](#) [851-43-014-20-001000](#) [851-93-006-20-001000](#) [851-93-010-20-001000](#) [853-43-020-10-001000](#) [86.010.0053.0](#) [116-43-308-41-007000](#) [121-13-318-41-001000](#) [121-13-320-41-001000](#) [121-13-308-41-001000](#) [123-43-314-41-801000](#) [123-43-420-41-001000](#) [122-13-316-41-001000](#) [123-13-624-41-001000](#) [123-43-306-41-001000](#) [12-3513-11](#) [123-91-320-41-001000](#) [126-43-310-41-002000](#) [AKSUN](#) [37V-T](#) [1437503-9](#) [1437504-1](#) [APA-640-G-P](#) [146-44-308-41-013000](#) [146-43-308-41-012000](#) [160-10-308-00-001000](#) [160-40-320-00-001000](#) [214-99-306-01-670800](#) [2-382761-4](#) [2-5331677-4](#) [2-640360-3](#) [2801-3-00-44-00-00-07-0](#) [940-44-052-17-400004](#) [299-83-314-11-001101](#) [1986000-2](#) [2103331641101000](#) [210-43-320-41-001000](#) [210-99-628-41-001000](#) [2-1437504-6](#) [2-1437515-5](#) [2-1437531-2](#)