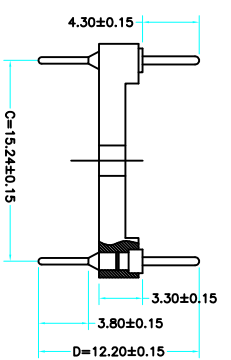
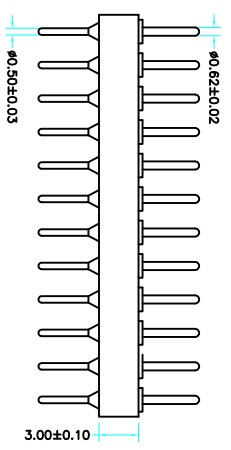
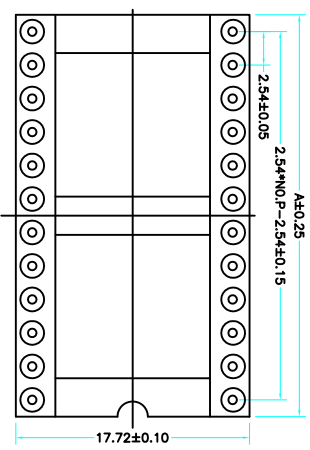
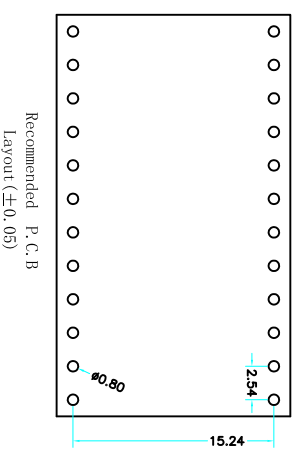


Technical Data
 Pin(outer sleeve):Brass,machined CuZn38Pb2
 Clip(Contact 4 Flinger):Beryllium copper,heat treated
 Insulator:PT UL94V-0 colour:black
 Tin Plated:2?m/80u"Ni,5um/200u"Sn
 Gold Plated:2um"/80u"Ni,GF
 Current rating:3Amps
 Contact resistance:max 10mΩ
 Dielectric strength:min 1000V RMS
 Operating temperature:-40°C to+105°C



| Poles | Dimensions(mm) |
|-------|----------------|
| 2*02 | 5.08 |
| 2*03 | 7.62 |
| 2*04 | 10.16 |
| 2*05 | 12.70 |
| 2*06 | 15.24 |
| 2*07 | 17.78 |
| 2*08 | 20.32 |
| 2*09 | 22.86 |
| 2*10 | 25.40 |
| 2*12 | 30.48 |
| 2*14 | 35.56 |
| 2*16 | 40.64 |
| 2*20 | 50.80 |
| 2*21 | 53.34 |
| 2*24 | 60.96 |
| 2*25 | 63.50 |



| | | | | |
|-------------------------|-----------|--------------------|------------------|---------------------------|
| X5621WV-2*XX-C1524D1220 | PPS 94V-0 | Brass | Tin Gold "u" | X5621F |
| PART NO | Material | Material(Terminal) | Finish(Terminal) | Mates With XKB Pin Header |

- X5621W V-2*XX-C1524 D1220**
 ① ② ③ ④ ⑤ ⑥
- Series: NO.
 - Category : W-Water
 - Welding Board Angle : V-Straight 180°
 - Row No-Pin No:2*XX-03,04,05,06,07,08,09,10,12,14,16, 20,21,24,25
 - Plastic Height : C=15.24mm
 - Pin Length : D:1220=12.20mm;42=4.2mm;74=7.40mm; 7.43=7.43mm;92=9.20mm;1020=10.20mm;1120=11.20mm; 1150=11.50mm;1170=11.70;1390=13.90mm;1340=13.40mm 1370=13.70mm;1420=14.20mm;1520=15.20mm;1620-16.20mm 1780=17.80mm;1820=18.20mm

| | | | |
|------|------|------------|-------------------------|
| DSND | DATE | SCALE: N/A | MODEL TYPE: |
| DWN | DATE | VIEW: | PART NO.: |
| CHKD | DATE | UNIT: mm | DWG NO.: |
| APPD | DATE | SIZE: A4 | X5621WV-2*XX-C1524D1220 |

| ΔX | REVISIONS | DATE | REVISED | APPROVED | UNSPECIFIED TOLERANCES |
|------|-------------|------|---------|----------|------------------------|
| ΔX | DESCRIPTION | | | | |
| ΔX | | | | | |
| MARK | | | | | |

X-ON Electronics

Largest Supplier of Electrical and Electronic Components

Click to view similar products for [IC & Component Sockets](#) category:

Click to view products by [XKB](#) manufacturer:

Other Similar products are found below :

[614-DG5](#) [670](#) [672](#) [673](#) [712-93-120-41-001000](#) [714-93-104-31-018000](#) [8-1437531-4](#) [8150-6P10](#) [835-43-014-10-001000](#) [851-41-006-10-001000](#) [851-43-008-20-001000](#) [851-43-014-20-001000](#) [851-93-006-20-001000](#) [851-93-010-20-001000](#) [853-43-020-10-001000](#) [86.010.0053.0](#) [116-43-308-41-007000](#) [121-13-318-41-001000](#) [121-13-320-41-001000](#) [121-13-308-41-001000](#) [123-43-314-41-801000](#) [123-43-420-41-001000](#) [122-13-316-41-001000](#) [123-13-624-41-001000](#) [123-43-306-41-001000](#) [12-3513-11](#) [123-91-320-41-001000](#) [126-43-310-41-002000](#) [AKSUN](#) [37V-T](#) [1437503-9](#) [1437504-1](#) [APA-640-G-P](#) [146-44-308-41-013000](#) [146-43-308-41-012000](#) [160-10-308-00-001000](#) [160-40-320-00-001000](#) [214-99-306-01-670800](#) [2-382761-4](#) [2-5331677-4](#) [2-640360-3](#) [2801-3-00-44-00-00-07-0](#) [940-44-052-17-400004](#) [299-83-314-11-001101](#) [1986000-2](#) [2103331641101000](#) [210-43-320-41-001000](#) [210-99-628-41-001000](#) [2-1437504-6](#) [2-1437515-5](#) [2-1437531-2](#)