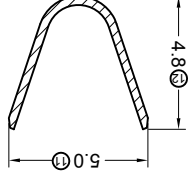


For and on behalf of
XKB INDUSTRIAL PRECISION CO., LIMITED
 香港星坤工業精密有限公司
 REVISIONS: _____
 AUTHORIZED SIGNATURE(S)

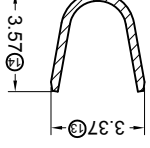
MARK	DESCRIPTION	DATE	REVISED	APPROVED	UNSPECIFIED TOLERANCES
△ X					L > 63 ±0.5
△ X					16 < L ≤ 63 ±0.4
△ X					4 < L ≤ 16 ±0.3
					L ≤ 4 ±0.2
					ANGULAR ±5°

DSD	DATE	SCALE: N/A	MODEL TYPE: X5700T-XX-X
DWN	DATE <td>VIEW: </td> <td>PART NO.:</td>	VIEW:	PART NO.:
CHKD	DATE <td>UNIT: mm</td> <td>DWG NO.:</td>	UNIT: mm	DWG NO.:
APPD	DATE <td>SIZE: A4</td> <td>REVISION</td>	SIZE: A4	REVISION

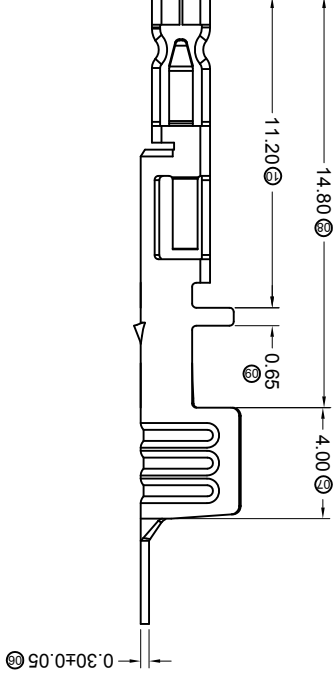
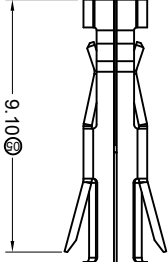
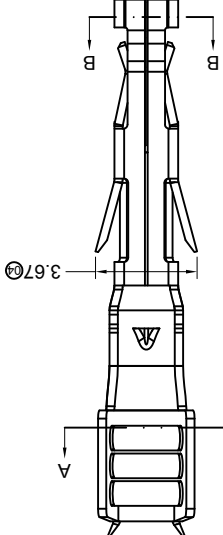
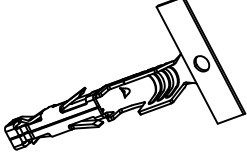
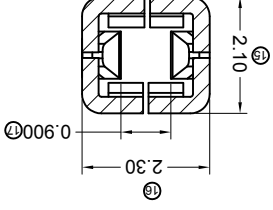
SECTION A-A
 SCALE 1:1
 CONDUCTOR CRIMP 12 AWG



SECTION A-A
 SCALE 1:1
 CONDUCTOR CRIMP 14/16 AWG



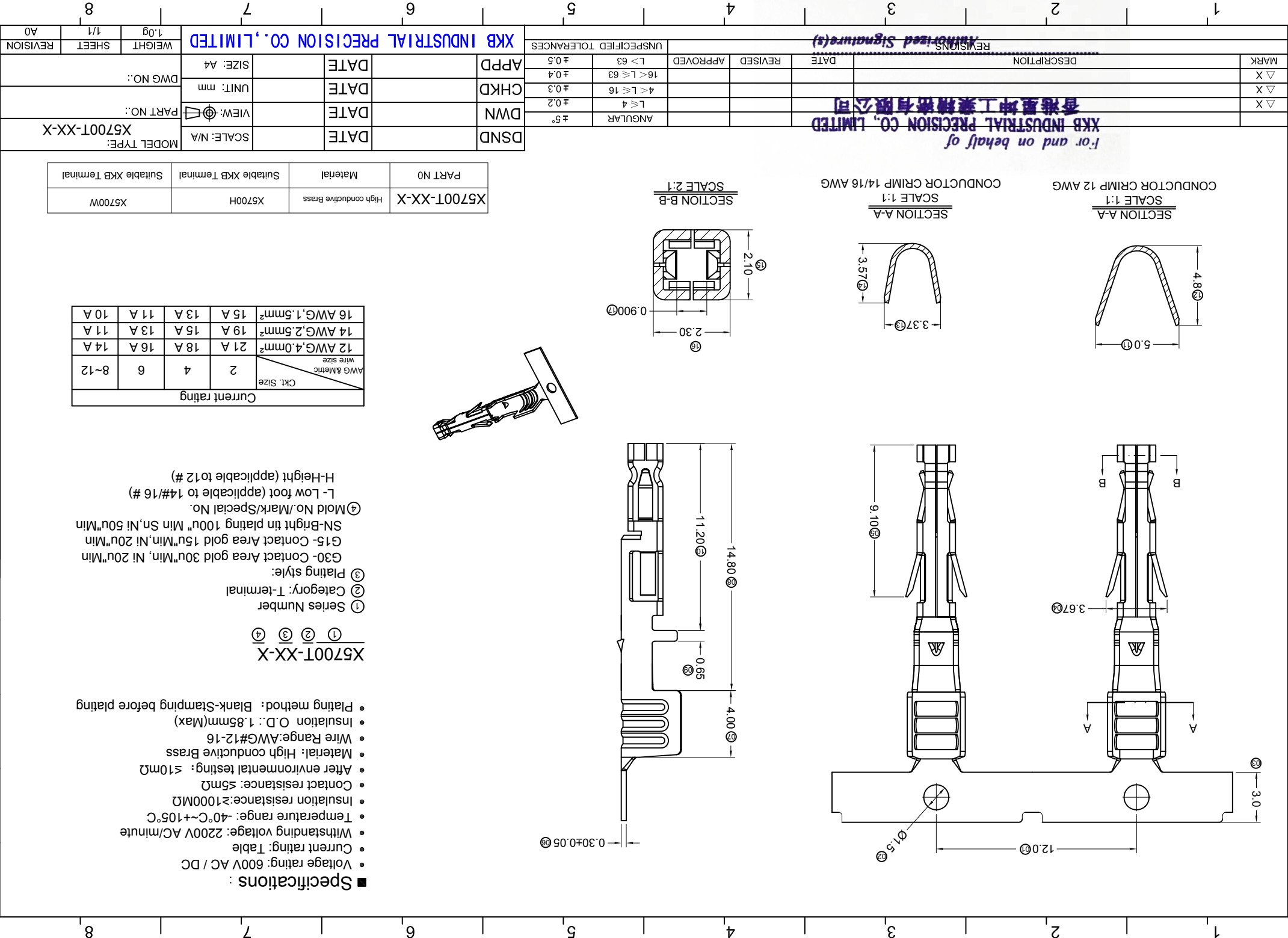
SECTION B-B
 SCALE 2:1



Current rating	Ckt. Size		AWG & Metric wire size	
	2	4	6	8~12
16 AWG, 1.5mm ²	15 A	13 A	11 A	10 A
14 AWG, 2.5mm ²	19 A	15 A	13 A	11 A
12 AWG, 4.0mm ²	21 A	18 A	16 A	14 A

- Specifications :**
- Voltage rating: 600V AC / DC
 - Current rating: Table
 - Withstanding voltage: 2200V AC/minute
 - Temperature range: -40°C~+105°C
 - Insulation resistance: ≥1000MΩ
 - Contact resistance: ≤5mΩ
 - After environmental testing: ≤10mΩ
 - Material: High conductive Brass
 - Wire Range: AWG#12-16
 - Insulation O.D.: 1.85mm(Max)
 - Plating method: Blank-Stamping before plating
- X5700T-XX-X**
- Series Number
 - Category: Terminal
 - Plating style:
 - ④ Mold No./Mark/Special No.
 G15- Contact Area gold 15u"Min, Ni 20u"Min
 G30- Contact Area gold 30u"Min, Ni 20u"Min
 SN-Bright tin plating 100u"Min Sn, Ni 50u"Min
- ④ Low foot (applicable to 14#/16 #)
 H-Height (applicable to 12 #)

PART NO	Material	Suitable XKB Terminal
X5700T-XX-X	High conductive Brass	X5700H
		Suitable XKB Terminal



X-ON Electronics

Largest Supplier of Electrical and Electronic Components

Click to view similar products for [Terminals](#) category:

Click to view products by [XKB](#) manufacturer:

Other Similar products are found below :

[HT-13-10](#) [71M-250-32-NB](#) [01-2065-1-0216](#) [00581P0075](#) [M10-10RX](#) [M10BCK](#) [60205-1](#) [604200-1](#) [60598-1-CUT-TAPE](#) [60617-1-C](#) [60873-1](#) [M14-516R/SK](#) [M14-6RSX](#) [M18-10FLX](#) [M18-8FBX](#) [M18-8R/LX](#) [M18BCK](#) [61314-6-C](#) [61-S](#) [61-SN-A](#) [62-NBM-A](#) [63-S](#) [640179-1](#) [640917-2-CUT-TAPE](#) [6501550002](#) [66107-2-C](#) [66107-4-C](#) [696683-1](#) [696834-1](#) [696861-1](#) [696931-1](#) [696999-1](#) [M8-516RK](#) [M86700006](#) [MA250DMFMX-A](#) [701-2007](#) [701-2307](#) [701-7761-03](#) [70F-110-32-PB](#) [718-N-A](#) [71M-187-20-NBL](#) [71M-250-32-NBL](#) [72F-187-20-NBL](#) [72M-250-32-NBL](#) [7310](#) [73F-250-32](#) [73F-250-32-NBL](#) [73F-250-32-NL](#) [F14-10C](#) [F-1M](#)