


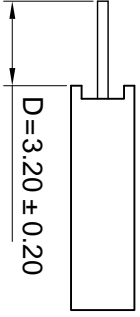
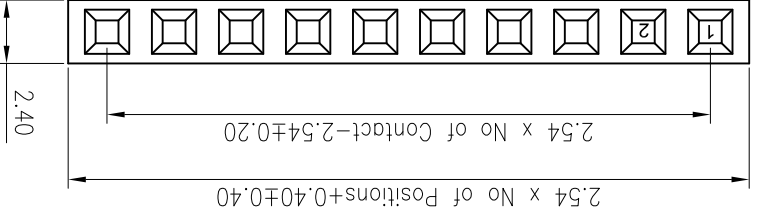
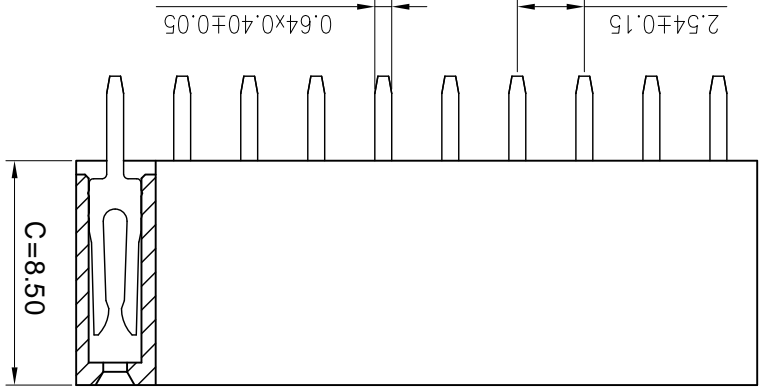
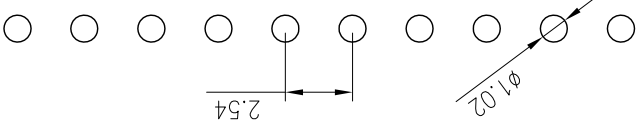
For and on behalf of  
**XKB INDUSTRIAL PRECISION CO., LIMITED**  
 香港星坤工業精密有限公司

MARK	DESCRIPTION	DATE	REVISED	APPROVED	UNSPECIFIED TOLERANCES
△ X					$L > 63$
△ X					$16 < L \leq 63$
△ X					$4 < L \leq 16$
△ X					$L \leq 4$
					$\pm 0.2$
					ANGULAR
					$\pm 5^\circ$

REVISIONS	XKB INDUSTRIAL PRECISION CO., LIMITED				
APPD	DATE		DATE	SIZE: A4	
CHKD	DATE		DATE	UNIT: mm	
DWN	DATE		DATE	VIEW: 	
DSND	DATE		DATE	SCALE: N/A	

MODEL TYPE:	X6511FV-XX-C85D32
PART NO.:	X6511FV-XX-C85D32
2.54mm Crimp Style Connectors	
DWG NO.:	
WEIGHT	1.0g
SHEET	1/1
REVISION	A0

P.C.B LAYOUT



PART NO	Material	Material(Pin)	Finish(Pin)	Suitable XKB Terminal
X6511FV-XX-C85D32	PA6T 94V-0	Brass	1U"Gold	X6511W

- ① Series No.
- ② Category: F-Female
- ③ Welding Board Angle: V-Stright 180°
- ④ Row No -Pin No :XX-01P-40P
- ⑤ Plastic height: C=8.5mm
- ⑥ Pin length:D=3.2mm

X6511 F V- XX - C85 D32  
 ① ② ③ ④ ⑤ ⑥

- Specifications :
- Voltage rating: 250VAC / DC
  - Current rating: 3A AC / DC
  - Withstanding voltage: 1000V AC/minute
  - Temperature range: -40 to +105
  - Insulation resistance:  $\geq 1000M$  Min
  - Contact resistance:  $\leq 20M$  Max
  - Material: PBT 94V-0
  - Plating Category: 1U"Gold
  - Wave soldering temperature:  $255 \pm 5^\circ C, 10s$

## X-ON Electronics

Largest Supplier of Electrical and Electronic Components

*Click to view similar products for [Headers & Wire Housings](#) category:*

*Click to view products by [XKB](#) manufacturer:*

Other Similar products are found below :

[95000-104TRLF](#) [10135584-644402LF](#) [DF62W-EP2022PCA](#) [95000-106TRLF](#) [DF62W-2022SCA](#) [DF62W-EP2022PC](#) [2203348](#) [DF62W-2022SC](#) [1084018](#) [1029039](#) [1084017](#) [802-10-012-10-002000](#) [1112640](#) [1112639](#) [891-007-9SS-BST1T](#) [000-34000](#) [0008550134](#) [0009482033](#) [0009507031](#) [57102-F02-18ULF](#) [57102-S06-03LF](#) [57202-S52-04LF](#) [PCN6-15S-2.5E](#) [0039019024](#) [58102-G61-06LF](#) [582553-1](#) [0009485154](#) [0009508121](#) [0022285053](#) [0050291907](#) [018731A](#) [LY20-4P-DT1-P1E-BR](#) [02.125.8002.8](#) [60101931](#) [60598-1 \(Cut Strip\)](#) [M1625-3R/100](#) [61062-3](#) [61082-181009](#) [CSU011177004](#) [636-1427](#) [638009-1](#) [641938-9](#) [641991-4](#) [644168-1](#) [644827-2](#) [647662-1](#) [65039-019ELF](#) [65692-001LF](#) [65781-018](#) [65781-047](#)