

For and on behalf of
XKB INDUSTRIAL PRECISION CO., LIMITED
 香港星坤工業精密有限公司

Authorized Signature(s)

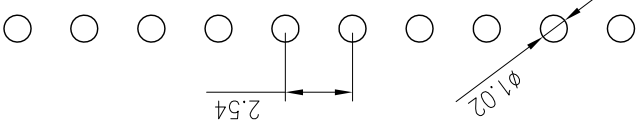
MARK	DESCRIPTION	DATE	REVISED	APPROVED	UNSPECIFIED TOLERANCES
△ X					$L > 63$
△ X					$16 < L \leq 63$
△ X					$4 < L \leq 16$
△ X					$L \leq 4$
					ANGULAR
					$\pm 5^\circ$

REVISIONS	DATE	REVISED	APPROVED	UNSPECIFIED TOLERANCES
				± 0.5

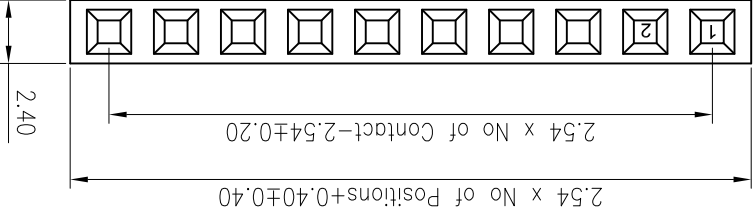
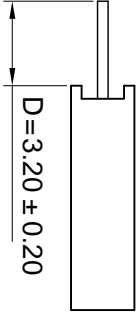
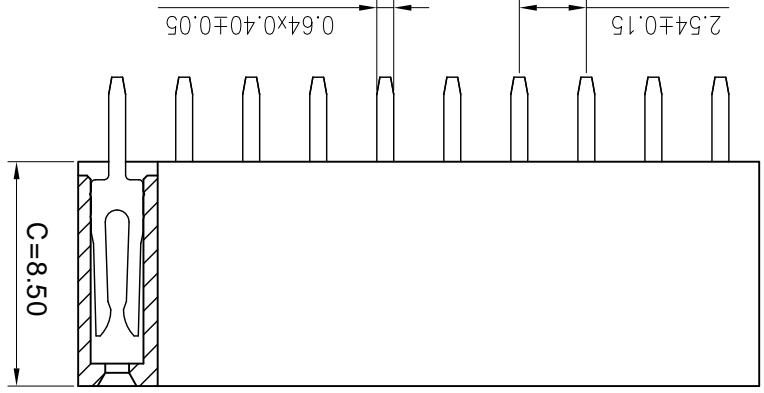
DATE	DATE	DATE	DATE	DATE
DNSD	DWN	CHKD	APPD	

SCALE: N/A	VIEW:	UNIT: mm	SIZE: A4
MODEL TYPE: X6511FV-XX-C85D32	PART NO.:	2.54mm Crimp Style Connectors	
DWG NO.:		DMG NO.:	
WEIGHT: 1.0g	SHEET: 1/1	REVISION: A0	

P.C.B LAYOUT



PART NO	Material	Material(Pin)	Finish(Pin)	Suitable XKB Terminal
X6511FV-XX-C85D32	PA6T 94V-0	Brass	1U"Gold	X6511W



Specifications :

- Voltage rating: 250VAC / DC
- Current rating: 3A AC / DC
- Withstanding voltage: 1000V AC/minute
- Temperature range: -40 to +105
- Insulation resistance: $\geq 1000M$ Min
- Contact resistance: $\leq 20M$ Max
- Material: PBT 94V-0
- Plating Category: 1U"Gold
- Wave soldering temperature: $255 \pm 5^\circ C, 10s$

X6511 F V- XX - C85 D32

- ① Series No.
- ② Category: F-Female
- ③ Welding Board Angle: V-Stright 180°
- ④ Row No -Pin No :XX-01P-40P
- ⑤ Plastic height: C=8.5mm
- ⑥ Pin length:D=3.2mm

X-ON Electronics

Largest Supplier of Electrical and Electronic Components

Click to view similar products for [Headers & Wire Housings](#) category:

Click to view products by [XKB](#) manufacturer:

Other Similar products are found below :

[95000-104TRLF](#) [10135584-644402LF](#) [DF62W-EP2022PCA](#) [95000-106TRLF](#) [DF62W-2022SCA](#) [DF62W-EP2022PC](#) [2203348](#) [DF62W-2022SC](#) [1084018](#) [1029039](#) [1084017](#) [802-10-012-10-002000](#) [1112640](#) [1112639](#) [891-007-9SS-BST1T](#) [000-34000](#) [0008550134](#) [0009482033](#) [0009507031](#) [57102-F02-18ULF](#) [57102-S06-03LF](#) [57202-S52-04LF](#) [PCN6-15S-2.5E](#) [0039019024](#) [58102-G61-06LF](#) [582553-1](#) [0009485154](#) [0009508121](#) [0022285053](#) [0050291907](#) [018731A](#) [LY20-4P-DT1-P1E-BR](#) [02.125.8002.8](#) [60101931](#) [60598-1 \(Cut Strip\)](#) [M1625-3R/100](#) [61062-3](#) [61082-181009](#) [CSU011177004](#) [636-1427](#) [638009-1](#) [641938-9](#) [641991-4](#) [644168-1](#) [644827-2](#) [647662-1](#) [65039-019ELF](#) [65692-001LF](#) [65781-018](#) [65781-047](#)