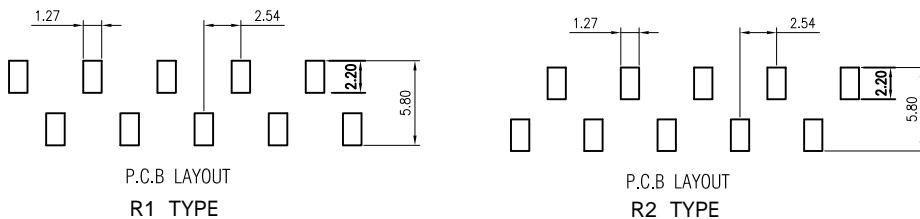
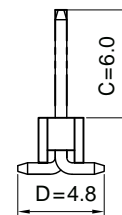
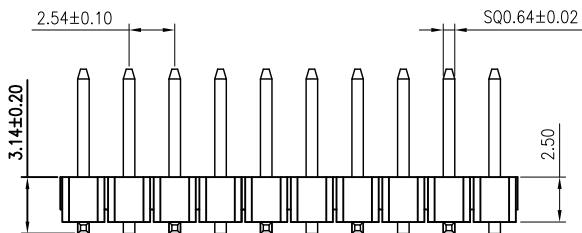
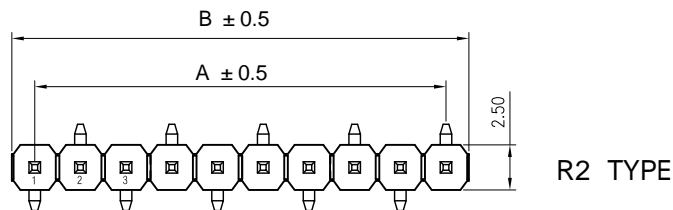
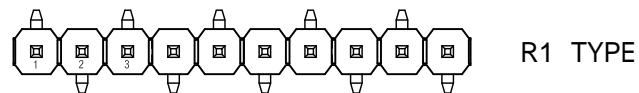


| Pin | A     | B      |
|-----|-------|--------|
| 1   |       | 2.54   |
| 2   | 2.54  | 5.08   |
| 3   | 5.08  | 7.62   |
| 4   | 7.62  | 10.16  |
| 5   | 10.16 | 12.70  |
| 6   | 12.70 | 15.24  |
| 7   | 15.24 | 17.78  |
| 8   | 17.78 | 20.32  |
| 9   | 20.32 | 22.86  |
| 10  | 22.86 | 25.40  |
| 11  | 25.40 | 27.94  |
| 12  | 27.94 | 30.48  |
| 13  | 30.48 | 33.02  |
| 14  | 33.02 | 35.56  |
| 15  | 35.56 | 38.10  |
| 16  | 38.10 | 40.64  |
| 17  | 40.64 | 43.18  |
| 18  | 43.18 | 45.72  |
| 19  | 45.72 | 48.26  |
| 20  | 48.26 | 50.80  |
| 21  | 50.80 | 53.34  |
| 22  | 53.34 | 55.88  |
| 23  | 55.88 | 58.42  |
| 24  | 58.42 | 60.96  |
| 25  | 60.96 | 63.50  |
| 26  | 63.50 | 66.04  |
| 27  | 66.04 | 68.58  |
| 28  | 68.58 | 71.12  |
| 29  | 71.12 | 73.66  |
| 30  | 73.66 | 76.20  |
| 31  | 76.20 | 78.74  |
| 32  | 78.74 | 81.28  |
| 33  | 81.28 | 83.82  |
| 34  | 83.82 | 86.36  |
| 35  | 86.36 | 88.90  |
| 36  | 88.90 | 91.44  |
| 37  | 91.44 | 93.98  |
| 38  | 93.98 | 96.52  |
| 39  | 96.52 | 99.06  |
| 40  | 99.06 | 101.60 |



### Specifications :

- Voltage rating: 250VAC / DC
- Current rating: 3A AC / DC
- Withstanding voltage: 1000V AC/minute
- Temperature range: -40 to +105
- Insulation resistance: ≥1000M Min
- Contact resistance: ≤20M Max
- Material: PA6T 94V-0
- Plating Category: 1U"Gold
- Color: Blank-Natural color

X6511 W V S - XX H-C60 D48 -X

① ② ③ ④ ⑤ ⑥ ⑦ ⑧ ⑨

- ① Series No.
- ② Category: W-wafer
- ③ Welding Board Angle: V- Stright 180°
- ④ Welding Way: S-SMT
- ⑤ Row No -Pin No : XX- 01P-40P
- ⑥ Plastic height: H=2.5mm
- ⑦ Pin length:C=3.0mm
- ⑧ Pin length:D=6.0mm
- ⑨ TYPE: R1 ; R2

|                       |            |               |             |                       |
|-----------------------|------------|---------------|-------------|-----------------------|
| X6511WVS-XXH-C60D48-X | PA6T 94V-0 | Brass         | 1U"Gold     | X6511F                |
| PART NO               | Material   | Material(Pin) | Finlsh(Pin) | Suitable XKB Terminal |

For and on behalf of  
**XKB INDUSTRIAL PRECISION CO., LIMITED**  
 香港星坤工業精密有限公司

△ X  
 △ X  
 △ X  
 MARK

DESCRIPTION

DATE

REVISED

APPROVED

UNSPECIFIED TOLERANCES

|      |      |            |                                      |
|------|------|------------|--------------------------------------|
| DSND | DATE | SCALE: N/A | MODEL TYPE:<br>X6511WVS-XXH-C60D48-X |
| DWN  | DATE | VIEW:      | PART NO.:                            |
| CHKD | DATE | UNIT: mm   | 2.54mm Crimp Style Connectors        |
| APPD | DATE | SIZE: A4   | DWG NO.:                             |
|      |      |            | WEIGHT                               |
|      |      |            | 1.0g                                 |
|      |      |            | SHEET                                |
|      |      |            | 1/1                                  |
|      |      |            | REVISION                             |
|      |      |            | A0                                   |

Authorized Signature(s)

**XKB INDUSTRIAL PRECISION CO., LIMITED**

## X-ON Electronics

Largest Supplier of Electrical and Electronic Components

*Click to view similar products for [Headers & Wire Housings](#) category:*

*Click to view products by [XKB](#) manufacturer:*

Other Similar products are found below :

[0015917161](#) [0022155065](#) [57102-F02-18ULF](#) [58102-G61-06LF](#) [582553-1](#) [01.001.5753.1](#) [0050291907](#) [02.125.8002.8](#) [609-3404](#) [61062-3](#)  
[CSU011177004](#) [622-0430](#) [622-3653LF](#) [63453-116](#) [636-1030](#) [636-1427](#) [636-3427](#) [636-4007](#) [641938-9](#) [65495-038](#) [65692-001LF](#) [65781-018](#)  
[65781-047](#) [65817-010LF](#) [65817-015LF](#) [67095-007LF](#) [67601157](#) [68631-112](#) [68645-018](#) [699319-000](#) [70.362.1628.0](#) [70-4210](#) [70-4226B](#) [70-](#)  
[4853B](#) [71.350.2428.0](#) [733-134](#) [733-162](#) [760-3052](#) [MHR-64-VUAL](#) [80.063.4001.1](#) [800-90-001-10-001000](#) [801-43-002-10-013000](#)  
[801-43-006-10-002000](#) [803-43-024-10-001000](#) [803-93-012-10-001000](#) [8-1437020-4](#) [819-22-004-30-001101](#) [820-22-006-30-001101](#)  
[820-22-008-30-001101](#) [821-22-002-10-001101](#)