

MARK		REVISIONS				UNSPECIFIED TOLERANCES	
Δ X						L > 63	±0.5
Δ X						16 < L ≤ 63	±0.4
Δ X						4 < L ≤ 16	±0.3
Δ X						L ≤ 4	±0.2
						ANGULAR	±5°
DESCRIPTION		DATE	REVISD	APPROVED			
www.xk-dg.cn www.helloxkb.com www.helloxkb.cn							
XKB INDUSTRIAL PRECISION CO.,LIMITED							
WEIGHT	SHEET	REVISION					
1.0g	1/1	A0					

MODEL TYPE: 2.50mm Crimp Style Connector

PART NO.:

DWG NO.: X8821WV-XXL-N0SN

SIZE: A4

UNIT: mm

VIEW:

SCALE: N/A

DATE

DATE

DATE

DATE

DATE

DATE

DATE

DATE

DATE

DATE

DATE

DATE

DATE

DATE

DATE

DATE

DATE

DATE

DATE

DATE

DATE

DATE

DATE

DATE

DATE

DATE

DATE

DATE

DATE

DATE

DATE

DATE

DATE

DATE

DATE

DATE

DATE

DATE

DATE

DATE

DATE

DATE

DATE

DATE

DATE

DATE

DATE

DATE

DATE

DATE

DATE

DATE

DATE

DATE

DATE

DATE

DATE

DATE

DATE

DATE

DATE

DATE

DATE

DATE

DATE

DATE

DATE

DATE

DATE

DATE

DATE

DATE

DATE

DATE

DATE

DATE

PART NO	Material	Material(Pin)	Finish(Pin)	Mates With
X8821WV-XXL-N0SN	Nylon 66 UL 94V-0	Brass	Tin-Plated	X8821H-L

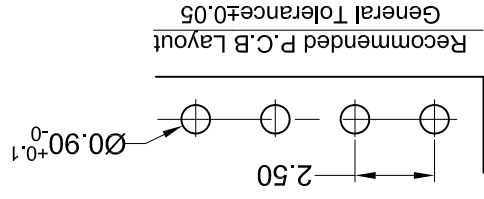
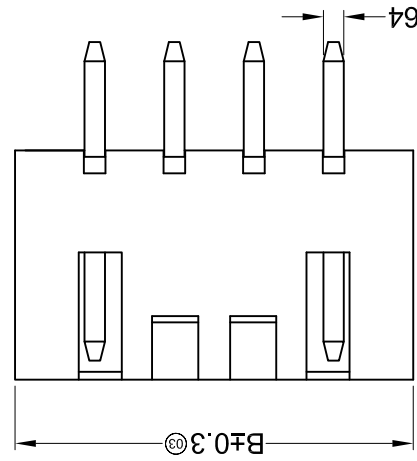
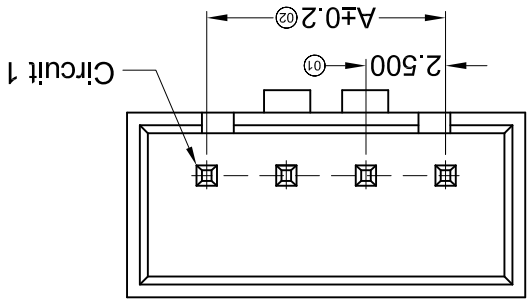
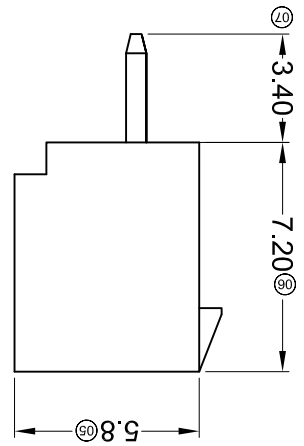
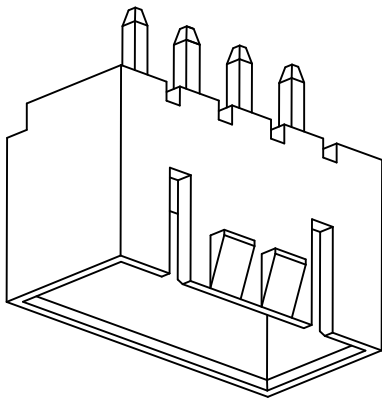
Poles	Dimensions(mm)	
	A	B
02	2.50	7.50
03	5.00	10.00
04	7.50	12.50
05	10.00	15.00
06	12.50	17.50
07	15.00	20.00
08	17.50	22.50
09	20.00	25.00

- Series No.
- Category: W-WAFER
- Welding Board Angle: V-180°
- Welding Way: Blank-DIP; S-SMT
- Row No.-Pin No.: XX-Single Row;
- Plug the Pin & Special No.: L-With Lock
- Material: NO-PA66 94V-0
- Plating Category: SN-Bright Tin Plating
- Color: Blank-Natural Color

X8821 W V X-XX L -N0 SN XX

- Voltage rating: 500V AC / DC
- Current rating: 3A AC / DC
- Withstanding voltage: 1000V AC/minute
- Temperature range: -25°C~+85°C
- Insulation resistance: ≥500MΩ
- Contact resistance: ≤20mΩ
- After environmental testing: ≤30mΩ

Specifications :



Recommended P.C.B Layout
General Tolerance±0.05

X-ON Electronics

Largest Supplier of Electrical and Electronic Components

Click to view similar products for [Headers & Wire Housings](#) category:

Click to view products by [XKB](#) manufacturer:

Other Similar products are found below :

[95000-104TRLF](#) [10135584-644402LF](#) [DF62W-EP2022PCA](#) [95000-106TRLF](#) [DF62W-2022SCA](#) [DF62W-EP2022PC](#) [2203348](#) [DF62W-2022SC](#) [1084018](#) [1029039](#) [1084017](#) [802-10-012-10-002000](#) [1112640](#) [1112639](#) [891-007-9SS-BST1T](#) [000-34000](#) [0008550134](#) [0009482033](#) [0009507031](#) [57102-F02-18ULF](#) [57102-S06-03LF](#) [57202-S52-04LF](#) [PCN6-15S-2.5E](#) [0039019024](#) [58102-G61-06LF](#) [582553-1](#) [0009485154](#) [0009508121](#) [0022285053](#) [0050291907](#) [018731A](#) [LY20-4P-DT1-P1E-BR](#) [02.125.8002.8](#) [60101931](#) [60598-1 \(Cut Strip\)](#) [M1625-3R/100](#) [61062-3](#) [61082-181009](#) [CSU011177004](#) [636-1427](#) [638009-1](#) [641938-9](#) [641991-4](#) [644168-1](#) [644827-2](#) [647662-1](#) [65039-019ELF](#) [65692-001LF](#) [65781-018](#) [65781-047](#)