



MARK		REVISIONS				UNSPECIFIED TOLERANCES	
Δ X		DATE	REVISED	APPROVED	L > 63	±0.5	
Δ X					16 < L ≤ 63	±0.4	
Δ X					4 < L ≤ 16	±0.3	
Δ X					L ≤ 4	±0.2	
					ANGULAR	±5°	
DESCRIPTION		DATE					
www.xk-dg.cn www.helloxkb.com www.helloxkb.cn							

DSND DATE
DWN DATE
CHKD DATE
APPD DATE

SCALE: N/A
VIEW:  PART NO.:
MODEL TYPE: 2.50mm Crimp Style Connector

WEIGHT 1.0g
SHEET 1/1
REVISION A0

XKB INDUSTRIAL PRECISION CO., LIMITED			
SIZE: A4	DATE		
UNIT: mm	DATE		
VIEW: 	DATE		
SCALE: N/A	DATE		

PART NO	Material	Material(Pin)	Finish(Pin)	Mates With
X8821WV-XXL-N0SN	Nylon 66 UL 94V-0	Brass	Tin-Plated	X8821H-L

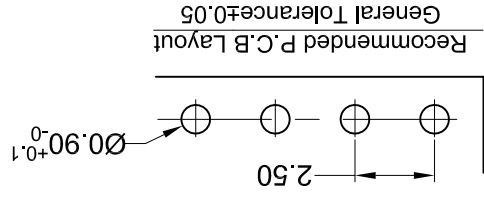
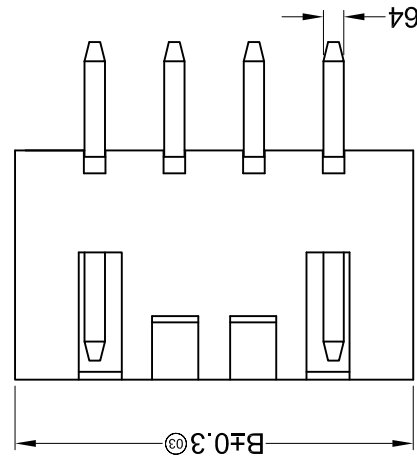
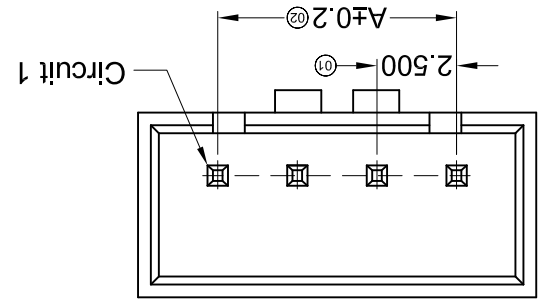
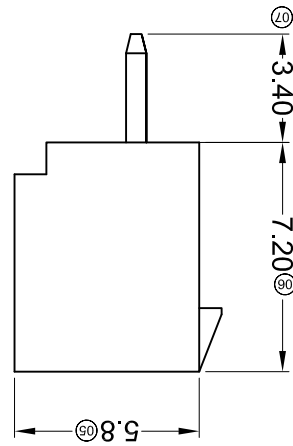
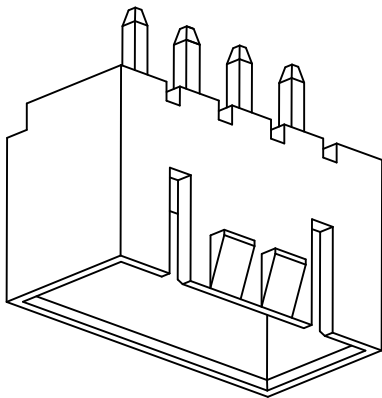
09	20.00	25.00	16	37.50	42.50
08	17.50	22.50	15	35.00	40.00
07	15.00	20.00	14	32.50	37.50
06	12.50	17.50	13	30.00	35.00
05	10.00	15.00	12	27.50	32.50
04	7.50	12.50	11	25.00	30.00
03	5.00	10.00	10	22.50	27.50
02	2.50	7.50	10	22.50	27.50
			A	A	B
			B	A	B

① Series No.
② Category: W-WAFER
③ Welding Board Angle: V-180°
④ Welding Way: Blank-DIP; S-SMT
⑤ Row No.-Pin No.: XX-Single Row;
⑥ Plug the Pin & Special No.: L-With Lock
⑦ Material: NO-PA66 94V-0
⑧ Plating Category: SN-Bright Tin Plating
⑨ Color: Blank-Natural Color

① ② ③ ④ ⑤ ⑥ ⑦ ⑧ ⑨
X8821 W V X-XX L -N0 SN XX

- Voltage rating: 500V AC / DC
- Current rating: 3A AC / DC
- Withstanding voltage: 1000V AC/minute
- Temperature range: -25°C~+85°C
- Insulation resistance: ≥500MΩ
- Contact resistance: ≤20mΩ
- After environmental testing: ≤30mΩ

■ Specifications :



Recommended P.C.B Layout
General Tolerance±0.05

X-ON Electronics

Largest Supplier of Electrical and Electronic Components

Click to view similar products for [Headers & Wire Housings](#) category:

Click to view products by [XKB](#) manufacturer:

Other Similar products are found below :

[95000-104TRLF](#) [10135584-644402LF](#) [DF62W-EP2022PCA](#) [95000-106TRLF](#) [DF62W-2022SCA](#) [DF62W-EP2022PC](#) [2203348](#) [DF62W-2022SC](#) [1084018](#) [1029039](#) [1084017](#) [802-10-012-10-002000](#) [1112640](#) [1112639](#) [891-007-9SS-BST1T](#) [000-34000](#) [0008550134](#) [0009482033](#) [0009507031](#) [57102-F02-18ULF](#) [57102-S06-03LF](#) [57202-S52-04LF](#) [PCN6-15S-2.5E](#) [0039019024](#) [58102-G61-06LF](#) [582553-1](#) [0009485154](#) [0009508121](#) [0022285053](#) [0050291907](#) [018731A](#) [LY20-4P-DT1-P1E-BR](#) [02.125.8002.8](#) [60101931](#) [60598-1 \(Cut Strip\)](#) [M1625-3R/100](#) [61062-3](#) [61082-181009](#) [CSU011177004](#) [636-1427](#) [638009-1](#) [641938-9](#) [641991-4](#) [644168-1](#) [644827-2](#) [647662-1](#) [65039-019ELF](#) [65692-001LF](#) [65781-018](#) [65781-047](#)