

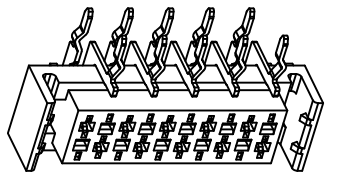
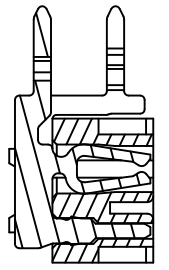
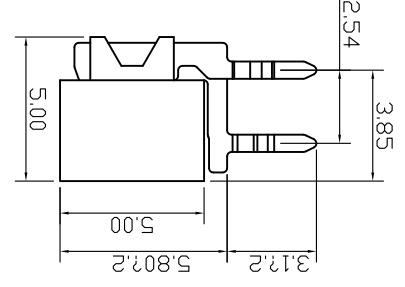
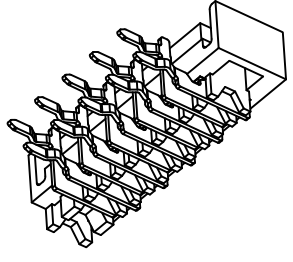
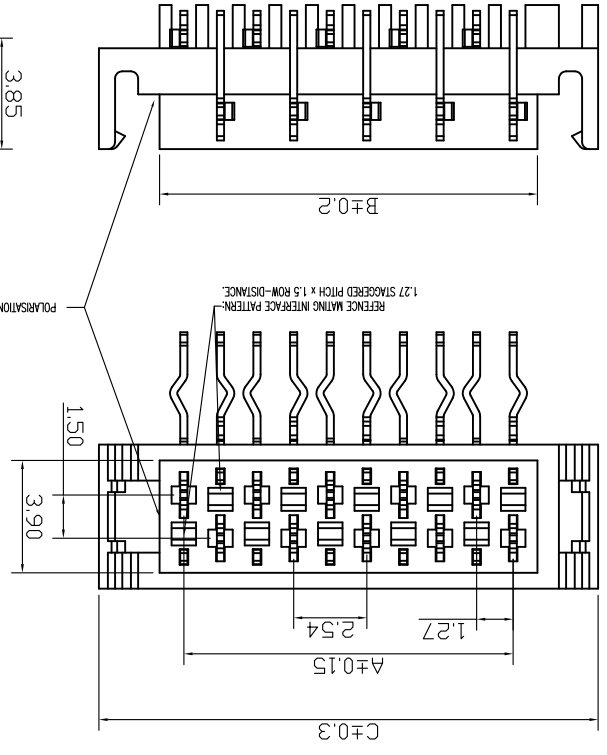
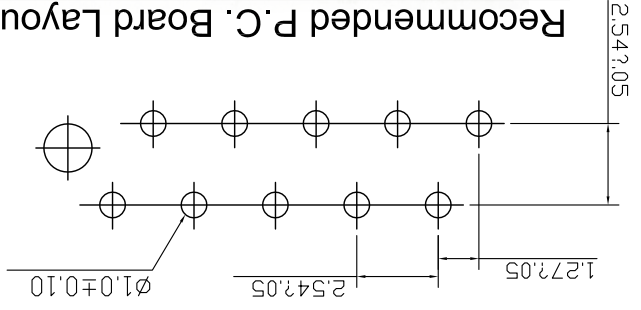
For and on behalf of
KXB INDUSTRIAL PRECISION CO., LIMITED
 香港星坤工業精密有限公司

Authorized Signature(s)

MARK	DESCRIPTION	DATE	REVISED	APPROVED	UNSPECIFIED TOLERANCES
△ X					± 0.5
△ X					L > 63 L < L ≤ 63 ± 0.4
△ X					4 < L ≤ 16 ± 0.3
					L ≤ 4 ± 0.2
					ANGULAR ± 5°

DATE	SCALE: N/A	MODEL TYPE:	PART NO.:	VIEW:	DATE	DATE	DATE	DATE	DATE	SIZE: A4	WEIGHT	SHEET	REVISION
			X9127WR-XXB4-9T-SNXX	①							1.0g	1/1	A0
DSND													
DWN													
CHKD													
APPD													

Recommended P.C. Board Layout



PART NO	Color	Material	Material(Fin)		PART NO	Color	Material	Material(Fin)	
			Purplish red	Tin-Plated				X9127WR-XXB4-9T-SNRD	RED
X9127WR-XXB4-9T-SNRD	Purplish red	PA9T UL 94V-0	Brass	Tin-Plated	X9127WR-XXB4-9T-SNRE	RED	PA9T UL 94V-0	Brass	Tin-Plated

Poles	Dimensions(mm)		A	B	C	A	B	C
	A	B						
4	3.81	5.50	9.71	16	19.05	20.74	24.95	29.20
6	6.35	8.04	12.25	18	21.59	23.28	27.49	31.75
8	8.89	10.58	14.79	20	24.13	25.82	30.03	33.44
10	11.43	13.12	17.33	22	26.67	28.36	32.57	35.11
12	13.97	15.66	19.87	24	29.21	30.90	35.11	37.65
14	16.51	18.20	22.41	26	31.75	33.44	37.65	

- ① Series No.
 ② Category: W-water
 ③ Welding Board Angle: R-Right Angle 90°
 ④ Welding Way: Blank-DIP
 ⑤ Row No.-Pin No.: XX-04P~26P
 ⑥ Plug the Pin & Special No.:
 B4-With boss, tall, Ear, Single Concave
 ⑦ Material: 9T-Nylon 9T 94V-0
 ⑧ Plating Category: SN-Bright tin plating
 ⑨ Color: RE-Red RD-purplish red
- Specifications :
- Voltage rating: 500V AC / DC
 - Current rating: 1A AC / DC
 - Withstanding voltage: 1000V AC/minute
 - Temperature range: -40°C~+105°C
 - Insulation resistance: ≥1000MΩ
 - Contact resistance: ≤20mΩ
 - After environmental testing: ≤30mΩ

X9127 W R X-XX B4-9T SN XX
 ① ② ③ ④ ⑤ ⑥ ⑦ ⑧ ⑨

X-ON Electronics

Largest Supplier of Electrical and Electronic Components

Click to view similar products for [Headers & Wire Housings](#) category:

Click to view products by [XKB](#) manufacturer:

Other Similar products are found below :

[95000-104TRLF](#) [10135584-644402LF](#) [DF62W-EP2022PCA](#) [95000-106TRLF](#) [DF62W-2022SCA](#) [DF62W-EP2022PC](#) [2203348](#) [DF62W-2022SC](#) [1084018](#) [1029039](#) [1084017](#) [802-10-012-10-002000](#) [1112640](#) [1112639](#) [891-007-9SS-BST1T](#) [000-34000](#) [0008550134](#) [0009482033](#) [0009507031](#) [57102-F02-18ULF](#) [57102-S06-03LF](#) [57202-S52-04LF](#) [PCN6-15S-2.5E](#) [0039019024](#) [58102-G61-06LF](#) [582553-1](#) [0009485154](#) [0009508121](#) [0022285053](#) [0050291907](#) [018731A](#) [LY20-4P-DT1-P1E-BR](#) [02.125.8002.8](#) [60101931](#) [60598-1 \(Cut Strip\)](#) [M1625-3R/100](#) [61062-3](#) [61082-181009](#) [CSU011177004](#) [636-1427](#) [638009-1](#) [641938-9](#) [641991-4](#) [644168-1](#) [644827-2](#) [647662-1](#) [65039-019ELF](#) [65692-001LF](#) [65781-018](#) [65781-047](#)