

For and on behalf of  
**KKB INDUSTRIAL PRECISION CO., LIMITED**  
 香港星洲工業精密有限公司

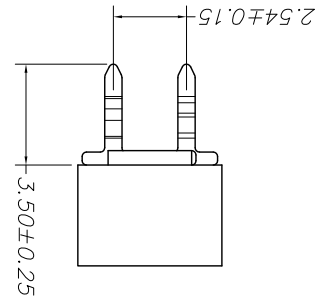
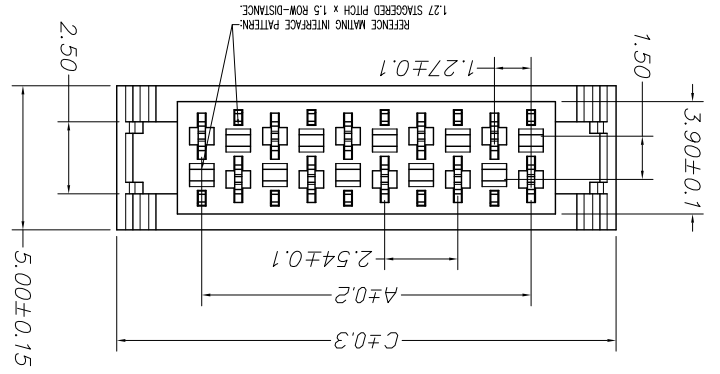
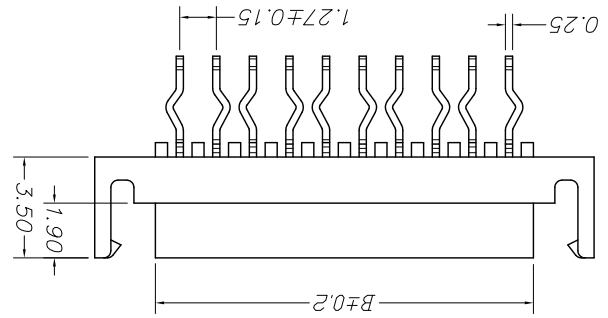
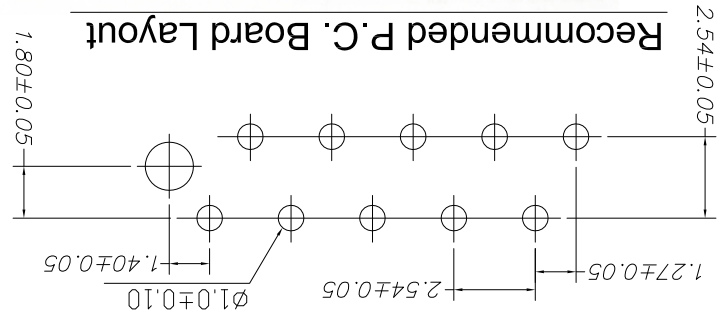
Authorized Signature(s)

MARK	DESCRIPTION	DATE	REVISED	APPROVED	UNSPECIFIED TOLERANCES
△ X					L > 63 ± 0.5
△ X					16 < L ≤ 63 ± 0.4
△ X					4 < L ≤ 16 ± 0.3
					L ≤ 4 ± 0.2
					ANGULAR ± 5°

REVISION	SHEET	WEIGHT	DATE	DATE	DATE	DATE	DATE
A0	1/1	1.0g					

AppD	SIZE: A4	DATE	
CHKD	UNIT: mm	DATE	
DWN	VIEW:	DATE	
DSND	SCALE: N/A	DATE	

MODEL TYPE: X9127WV-XXB-9T-SNXX  
 PART NO.:  
 1.27 mm Crimp Style Connectors  
 DWG NO.:



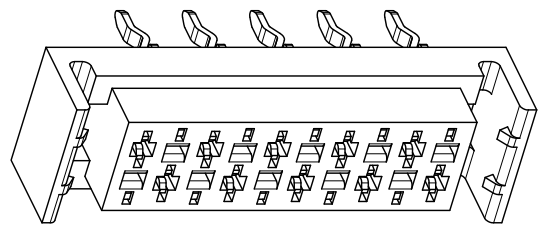
PART NO	Color	Material	Material(Pin)	Finish(Pin)
X9127WV-XXB-9T-SNRD	Purplish red	PA9T UL 94V-0	Brass	Tin-Plated
X9127WV-XXB-9T-SNRE	RED	PA9T UL 94V-0	Brass	Tin-Plated

Poles	A	B	C	Dimensions(mm)
04	3.81	5.50	9.71	
06	6.35	8.04	12.25	
08	8.89	10.58	14.79	
10	11.43	13.12	17.33	
12	13.97	15.66	19.87	
14	16.51	18.20	22.41	
16	19.05	20.74	24.95	
18	21.59	23.28	27.49	
20	24.13	25.82	30.03	
22	26.67	28.36	32.57	
24	29.21	30.90	35.11	
26	31.75	33.44	37.65	

- ① Series No.
- ② Category: W-water
- ③ Welding Board Angle: V- Straight 180°
- ④ Welding Way: Blank-DIP
- ⑤ Row No.-Pin No.: XX-04P~26P
- ⑥ Plug the Pin & Special No.:
- ⑦ B-Without boss and tall, With Ear, Concave
- ⑧ Material: 9T-Nylon 9T 94V-0
- ⑨ Plating Category: SN-Bright tin plating
- ⑩ Color: RE-Red RD-purplish red

X9127 W V X-XX B-9T SN XX  
 ① ② ③ ④ ⑤ ⑥ ⑦ ⑧ ⑨

- Specifications :**
- Voltage rating: 500V AC / DC
  - Current rating: 1A AC / DC
  - Withstanding voltage: 1000V AC/minute
  - Temperature range: -40°C~+105°C
  - Insulation resistance: ≥1000MΩ
  - Contact resistance: ≤20mΩ
  - After environmental testing: ≤30mΩ



## X-ON Electronics

Largest Supplier of Electrical and Electronic Components

*Click to view similar products for [Headers & Wire Housings](#) category:*

*Click to view products by [XKB](#) manufacturer:*

Other Similar products are found below :

[95000-104TRLF](#) [10135584-644402LF](#) [DF62W-EP2022PCA](#) [95000-106TRLF](#) [DF62W-2022SCA](#) [DF62W-EP2022PC](#) [2203348](#) [DF62W-2022SC](#) [1084018](#) [1029039](#) [1084017](#) [802-10-012-10-002000](#) [1112640](#) [1112639](#) [891-007-9SS-BST1T](#) [000-34000](#) [0008550134](#) [0009482033](#) [0009507031](#) [57102-F02-18ULF](#) [57102-S06-03LF](#) [57202-S52-04LF](#) [PCN6-15S-2.5E](#) [0039019024](#) [58102-G61-06LF](#) [582553-1](#) [0009485154](#) [0009508121](#) [0022285053](#) [0050291907](#) [018731A](#) [LY20-4P-DT1-P1E-BR](#) [02.125.8002.8](#) [60101931](#) [60598-1 \(Cut Strip\)](#) [M1625-3R/100](#) [61062-3](#) [61082-181009](#) [CSU011177004](#) [636-1427](#) [638009-1](#) [641938-9](#) [641991-4](#) [644168-1](#) [644827-2](#) [647662-1](#) [65039-019ELF](#) [65692-001LF](#) [65781-018](#) [65781-047](#)