

Voltage rating:500V AC/DC

额定电压:500V AC/DC

Current rating:2.4A

额定电流: 2.4A

Insulation resistance:1000MΩ Min

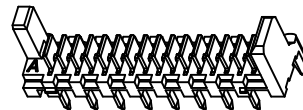
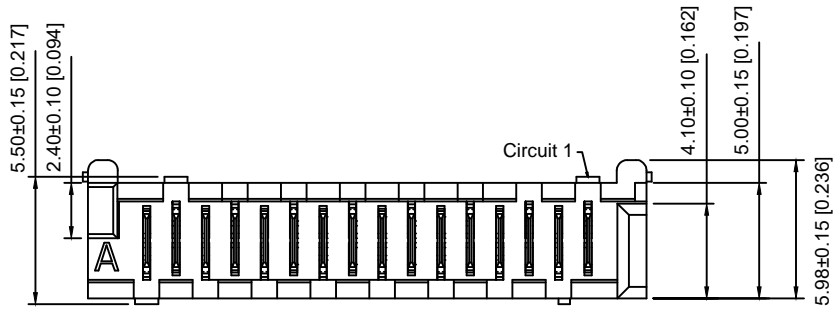
绝缘电阻: 1000MΩ Min

Withstanding voltage:≥500V AC/minute

耐压: ≥500VC/分钟

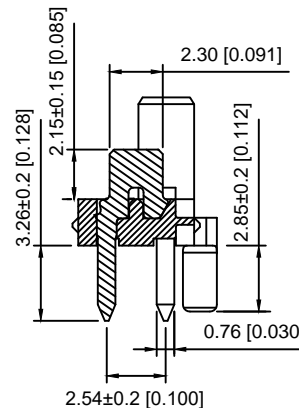
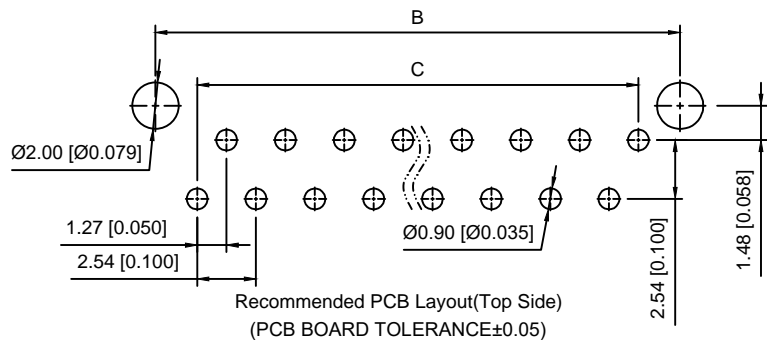
Temperature range:-40°C-+105°C

使用温度: -40°C-+105°C



X9127 W V -XX - 9T SW X
① ② ③ ④ ⑤ ⑥ ⑦

- ① Series No.
- ② Category:W-wafer
- ③ Welding Board Angle:V- Straight 180°
- ④ Row No.-Pin No.:XX-04P~26P
- ⑤ Material:9T-Nylon 9T UL94V-0
- ⑥ Planting Category:SW-Bright Tin plating
- ⑦ Color: BK-Black W-White



CCT SIZE	BIM.A	BIM.B	BIM.C	BIM.D	CCT SIZE	BIM.A	BIM.B	BIM.C	BIM.D
4	8.86	6.35	3.81	7.66	16	24.10	21.59	19.05	22.90
6	11.40	8.89	6.35	10.20	18	26.64	24.13	21.59	25.44
8	13.94	11.43	8.89	12.74	20	29.18	26.67	24.13	27.98
10	16.48	13.94	11.43	15.28	22	31.72	29.21	26.67	30.52
12	19.02	16.51	13.97	17.82	24	34.26	31.75	29.21	33.06
14	21.56	19.05	16.51	20.36	26	36.80	34.29	31.75	35.60

X9127WV-XX-9TSWBK	Black	Nylon 9T UL94V-0	Brass	Tin-Plated
X9127WV-XX-9TSWW	White			
PART NO	Color	Material	Material(Pin)	Finish(Pin)

MARK	DESCRIPTION	DATE	REVISED	APPROVED	UNSPECIFIED TOLERANCES
ΔX					ANGLAR ±5°
ΔX					L ≤ 4 ±0.2
ΔX					4 < L ≤ 16 ±0.3
					16 < L ≤ 63 ±0.4
					L > 63 ±0.5
REVISIONS					
www.helloxkb.com www.helloxkb.cn www.xk-dg.cn					



XKB INDUSTRIAL PRECISION CO., LIMITED

DSND	SCALE: N/A	MODEL TYPE: 1.27mm Crimp Style Connectors
DWN	VIEW:	PART NO.: X9127WV-XX-9TSWX
CHKD	UNIT: mm/in	DWG NO.: X-X9127WV-XX-9TSWX
APPD	SIZE: A4	WEIGHT
		SHEET
		REVISION
		1/1
		A0

X-ON Electronics

Largest Supplier of Electrical and Electronic Components

Click to view similar products for [Headers & Wire Housings](#) category:

Click to view products by [XKB](#) manufacturer:

Other Similar products are found below :

[57102-F02-18ULF](#) [58102-G61-06LF](#) [582553-1](#) [009176003701906](#) [0050291907](#) [02.125.8002.8](#) [609-3404](#) [61062-3](#) [622-0430](#) [622-3653LF](#)
[63453-116](#) [636-1030](#) [636-1427](#) [636-3427](#) [636-4007](#) [641938-9](#) [65495-038](#) [65692-001LF](#) [65781-018](#) [65781-047](#) [65817-010LF](#) [65817-015LF](#)
[66207-023LF](#) [67016-026LF](#) [67095-007LF](#) [68631-112](#) [68645-018](#) [68648-049](#) [699319-000](#) [M90C108951C](#) [70.362.1628.0](#) [70-4210](#) [70-4226B](#)
[70-4853B](#) [707-5020](#) [707-5028](#) [71.350.2428.0](#) [71961-016LF](#) [733-134](#) [754199-000](#) [760-3052](#) [787-8014-00](#) [FCN-367T-T012/H](#)
[80.063.4001.1](#) [800-90-001-10-001000](#) [801-43-002-10-013000](#) [801-43-006-10-002000](#) [803-41-018-10-001000](#) [803-43-014-20-001000](#)
[803-43-024-10-001000](#)