

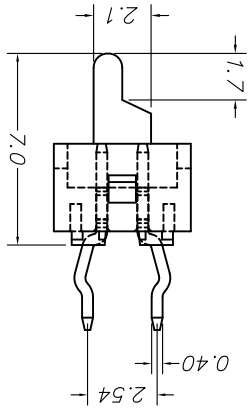
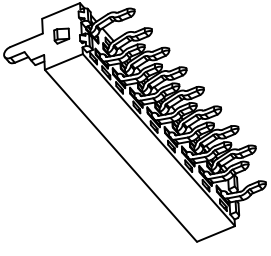
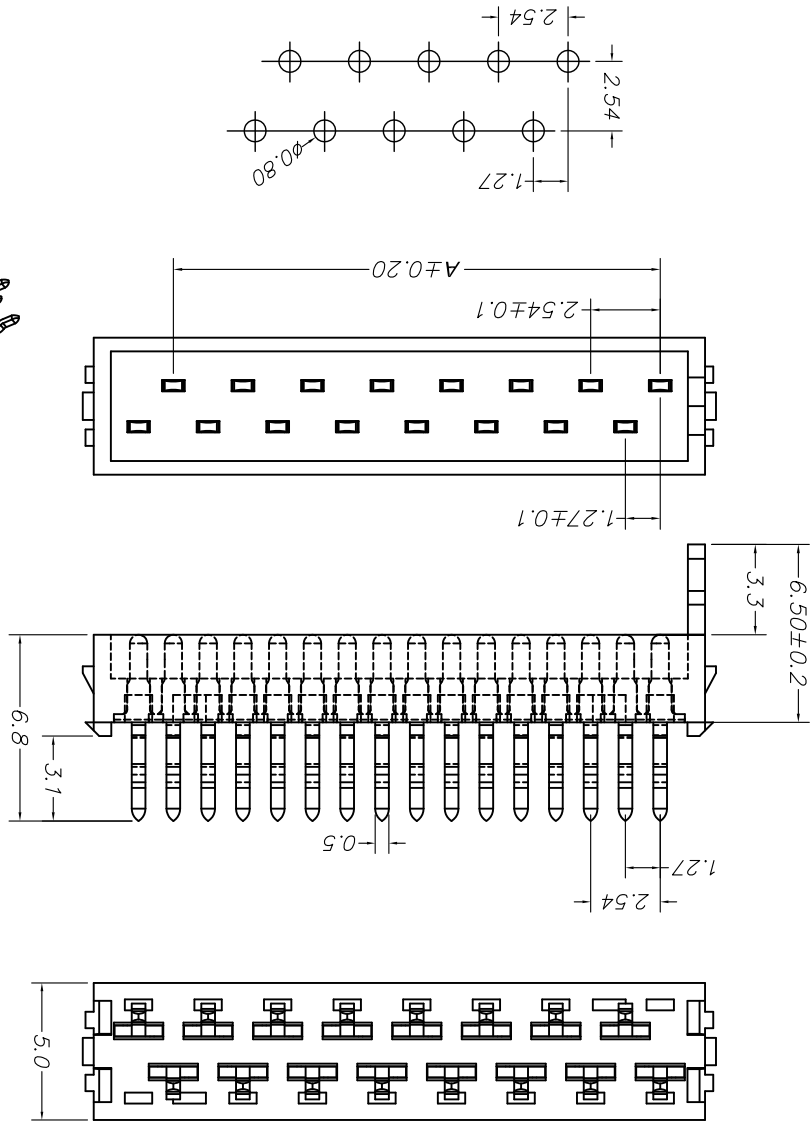
For and on behalf of  
**XKB INDUSTRIAL PRECISION CO., LIMITED**  
 香港星洲工業精密有限公司

REVISIONS  
 (Unauthorized Signature(s))

MARK	DESCRIPTION	DATE	REVISD	APPROVED	UNSPECIFIED TOLERANCES
△X					L > 63 ±0.5
△X					16 < L ≤ 63 ±0.4
△X					4 < L ≤ 16 ±0.3
△X					L ≤ 4 ±0.2
					ANGULAR ±5°

DATE	SCALE: N/A	MODEL TYPE:	X9127WV-XXA4-XXSNXX
DNSD			
DWN			
CHKD			
AppD			
	DATE	VIEW:	PART NO.: 1.27 mm Crimp Style Connector
	DATE	UNIT: mm	DWG NO.:
	DATE	SIZE: A4	
		WEIGHT: 1.0g	
		SHEET: 1/1	
		REVISION: A0	

**Recommended P.C. Board Layout**



PART NO	Color	Material	Material(Pin)	Finish(Pin)
X9127WV-XXA4-PTSNRE	Red	PA9T UL 94V-0	PA9T UL 94V-0	Tin-Plated
X9127WV-XXA4-9TNSRD	Purplish red	PA9T UL 94V-0	PA9T UL 94V-0	Tin-Plated
X9127WV-XXA4-PTSNRE	Red	PBT UL 94V-0	PA9T UL 94V-0	Tin-Plated

Poles	Dimensions(mm)	Dimensions(mm)	Poles
04	2.54	17.78	A
06	5.08	20.32	A
08	7.62	22.86	A
10	10.16	25.40	A
12	12.7	27.94	A
14	15.24	30.48	A

**Specifications :**

- Voltage rating: 500V AC / DC
- Current rating: 1A AC / DC
- Withstanding voltage: 1000V AC/minute
- Temperature range: -40°C~+105°C
- Insulation resistance: ≥1000MΩ
- Contact resistance: ≤20mΩ
- After environmental testing: ≤30mΩ

X9127 W V X - XX A4 - XX SN XX

- ① Series No.
- ② Category: W-water
- ③ Welding Board Angle: V-180°
- ④ Welding Way: Blank-DIP
- ⑤ Row No.-Pin No. XX-Single row
- ⑥ Plug the Pin & Special NO.
- ⑦ A4-Lack of on both sides,
- ⑧ Material: 9T-PA9T UL94V-0; PT-PBT 94V-0 with the stay column
- ⑨ Planting Category: SN-Bright tin plating
- ⑩ Color: RE-red RD-purplish red

## X-ON Electronics

Largest Supplier of Electrical and Electronic Components

*Click to view similar products for [Headers & Wire Housings](#) category:*

*Click to view products by [XKB](#) manufacturer:*

Other Similar products are found below :

[95000-104TRLF](#) [10135584-644402LF](#) [DF62W-EP2022PCA](#) [95000-106TRLF](#) [DF62W-2022SCA](#) [DF62W-EP2022PC](#) [2203348](#) [DF62W-2022SC](#) [1084018](#) [1029039](#) [1084017](#) [802-10-012-10-002000](#) [1112640](#) [1112639](#) [891-007-9SS-BST1T](#) [000-34000](#) [0008550134](#) [0009482033](#) [0009507031](#) [57102-F02-18ULF](#) [57102-S06-03LF](#) [57202-S52-04LF](#) [PCN6-15S-2.5E](#) [0039019024](#) [58102-G61-06LF](#) [582553-1](#) [0009485154](#) [0009508121](#) [0022285053](#) [0050291907](#) [018731A](#) [LY20-4P-DT1-P1E-BR](#) [02.125.8002.8](#) [60101931](#) [60598-1 \(Cut Strip\)](#) [M1625-3R/100](#) [61062-3](#) [61082-181009](#) [CSU011177004](#) [636-1427](#) [638009-1](#) [641938-9](#) [641991-4](#) [644168-1](#) [644827-2](#) [647662-1](#) [65039-019ELF](#) [65692-001LF](#) [65781-018](#) [65781-047](#)