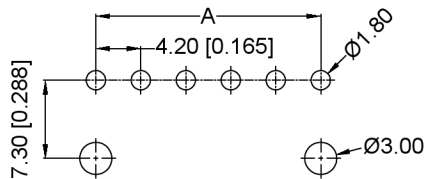
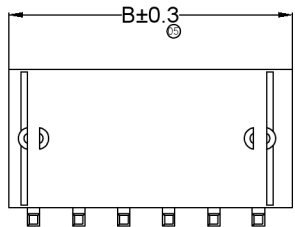
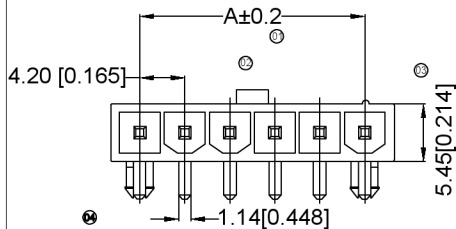
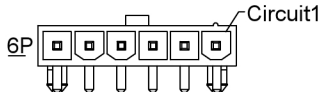
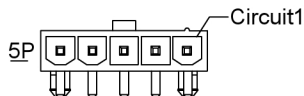
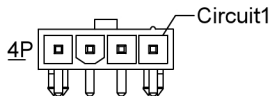
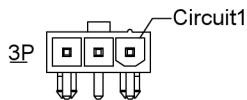
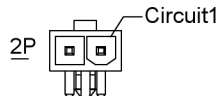
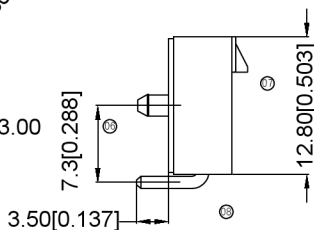


XKB



Recommended PCB Layout  
General Tolerance: ±0.05



Specifications:

规格: **XKB**  
 Voltage rating: 600V AC/DC  
 额定电压: 600V AC/DC  
 Current rating: 9A AC/DC  
 额定电流: 9A AC/DC  
 Withstanding voltage: 1500V AC/minute  
 耐受电压: 1500V AC/分钟  
 Temperature range: -25°C +85°C  
 温度范围: -25°C +85°C  
 Insulation resistance: ≥1000MΩ  
 绝缘电阻: ≥1000MΩ  
 Contact resistance: ≤10mΩ  
 接触电阻: ≤10mΩ  
 After environmental testing: ≤20mΩ  
 环境测试后: ≤20mΩ

X9357WR X-XX S-XXSNXX  
 ○○○○○○ ○○○○○○

- 01 Series No.
- 02 Category: W-wafer
- 03 Welding Board Angle: R-Right Angle 90°
- 04 Welding Way: Blank-DIP;
- 05 Row No.-Pin No.: XX-Single row
- 06 Special NO.: S-W/With positioning column
- 07 Material: N0-PA66 94V-0;  
N2-PA66 94V-2
- 08 Planting Category: SN-Brigh tin plating
- 09 Color: E Blank-natural color ;BK-Black

Poles	Dimensions(mm)	
	A	B
02	4.20	9.60
03	8.40	13.80
04	12.60	18.00
05	16.80	22.20
06	21.00	26.40

X9357WR-XXS-N2SNBK	Nylon 66 UL94V-2 (Black)	Brass	Tin-Plated	X9357H
X9357WR-XXS-N0SN	Nylon 66 UL 94V-0			
X9357WR-XXS-N2SN	Nylon 66 UL 94V-2			
PART NO	Material	Material(Pin)	Finish(Pin)	Suitable XKB Terminal

广东星坤科技股份有限公司

生	日
发	期
Δ	
MADE IN CHINA	DESCRIPTION
文件工程章	REVISIONS
	DATE
	REVISED
	APPROVED
	UNSPECIFIED TOLERANCES

www.hkxkb.com

DSND	DATE	SCALE: NA	MODEL TYPE: X9357WR-XXS-XXSNXX
DWNN	DATE	VIEW:	PART NO.: 2.40mm Crimp Style Connectors
CHKD	DATE	UNIT: mm/in	DWG NO.:
APPD	DATE	SIZE: A4	
XKB INDUSTRIAL PRECISION CO., LIMITED			WEIGHT: 1.0g
			SHEET: 1/1
			REVISION: A0

## X-ON Electronics

Largest Supplier of Electrical and Electronic Components

*Click to view similar products for [Headers & Wire Housings](#) category:*

*Click to view products by [XKB](#) manufacturer:*

Other Similar products are found below :

[57102-F02-18ULF](#) [58102-G61-06LF](#) [582553-1](#) [009176003701906](#) [01.001.5753.1](#) [0050291907](#) [02.125.8002.8](#) [609-3404](#) [61062-3](#)  
[CSU011177004](#) [622-0430](#) [622-3653LF](#) [63453-116](#) [636-1030](#) [636-1427](#) [636-3427](#) [636-4007](#) [641938-9](#) [644827-2](#) [65495-038](#) [65692-001LF](#)  
[65781-018](#) [65781-047](#) [65817-010LF](#) [65817-015LF](#) [66207-023LF](#) [67095-007LF](#) [67601157](#) [68631-112](#) [68645-018](#) [699319-000](#)  
[M90C108951C](#) [70.362.1628.0](#) [70-4210](#) [70-4226B](#) [70-4853B](#) [707-5028](#) [71.350.2428.0](#) [71961-016LF](#) [733-134](#) [733-162](#) [754199-000](#) [760-](#)  
[3052](#) [80.063.4001.1](#) [800-90-001-10-001000](#) [800-90-010-10-002000](#) [801-43-002-10-013000](#) [801-43-006-10-002000](#) [803-41-018-10-001000](#)  
[803-43-024-10-001000](#)