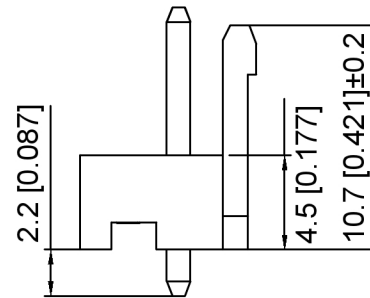
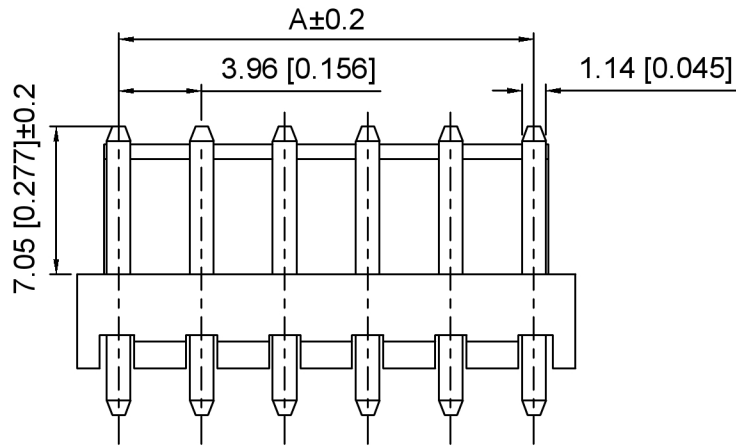


Specifications:

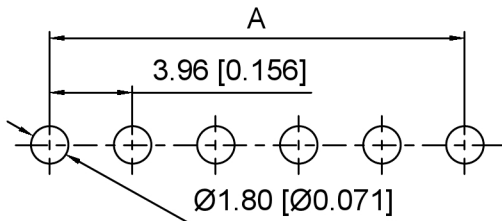
规格:

- Voltage rating: 250V AC/DC
- 额定电压: 250V AC/DC
- Current rating: 24A AC/DC
- 额定电流: 24A AC/DC
- Withstanding voltage: 1000V AC/minute
- 耐受电压: 1000V AC/分钟
- Temperature range: -40°C~+105°C
- 温度范围: -40°C~+105°C
- Insulation resistance: ≥1000MΩ
- 绝缘电阻: ≥1000MΩ
- Contact resistance: ≤20mΩ
- 接触电阻: ≤20mΩ



X9396 W V - XX R - LP SN  
 ① ② ③ ④ ⑤ ⑥ ⑦

1. Series No
2. Category: W-Wafer
3. Welding Board Angle: V-Straight 180°
4. Row No. Pin No: XX-02~2x08Pin
5. Special No: R-DIP 2.2mm
6. Material: LP-LCP UL94V-0 ,Natural  
CAP: LCP UL94V-0 ,Natural
7. Plating: SN- Tin Plated



Recommended PCB Layout(Top view)  
Tolerance: ±0.05mm

Poles	Dimensions (mm)		
	A	B	C
02	3.96	7.92	5.32
03	7.92	11.88	9.28
04	11.88	15.84	13.24
05	15.84	19.80	17.20
06	19.80	23.76	21.16
07	23.76	27.72	25.12
08	27.72	31.68	29.08

X9396WW-XXR-LPSN	LCP	Brass	X9396H
PART NO	Material	Material(Pin)	Suitable XKB Housing

DSND	SCALE: N/A	MODEL TYPE: 3.96mm Crimp Style Connector
DWN	VIEW:	PART NO.: X9396WW-XXR-LPSN
CHKD	UNIT: mm/in	DWG NO.: X-X9396WW-XXR-LPSN
APPD	SIZE: A4	WEIGHT SHEET REVISION
		1/1 A0



XKB INDUSTRIAL PRECISION CO., LIMITED

ANGLAR	±5°
L ≤ 4	±0.2
4 < L ≤ 16	±0.3
16 < L ≤ 63	±0.4
L > 63	±0.5
UNSPECIFIED TOLERANCES	

MARK	DESCRIPTION	DATE	REVISED	APPROVED
	REVISIONS			

www.helloxkb.com www.helloxkb.cn www.xk-dg.cn

广东星坤科技股份有限公司

文件工程章

## X-ON Electronics

Largest Supplier of Electrical and Electronic Components

*Click to view similar products for [Headers & Wire Housings](#) category:*

*Click to view products by [XKB](#) manufacturer:*

Other Similar products are found below :

[0015917161](#) [0022155065](#) [57102-F02-18ULF](#) [58102-G61-06LF](#) [582553-1](#) [01.001.5753.1](#) [0050291907](#) [02.125.8002.8](#) [609-3404](#) [61062-3](#)  
[CSU011177004](#) [622-0430](#) [622-3653LF](#) [63453-116](#) [636-1030](#) [636-1427](#) [636-3427](#) [636-4007](#) [641938-9](#) [65495-038](#) [65692-001LF](#) [65781-018](#)  
[65781-047](#) [65817-010LF](#) [65817-015LF](#) [67095-007LF](#) [67601157](#) [68631-112](#) [68645-018](#) [699319-000](#) [70.362.1628.0](#) [70-4210](#) [70-4226B](#) [70-](#)  
[4853B](#) [71.350.2428.0](#) [733-134](#) [733-162](#) [760-3052](#) [MHR-64-VUAL](#) [80.063.4001.1](#) [800-90-001-10-001000](#) [801-43-002-10-013000](#)  
[801-43-006-10-002000](#) [803-43-024-10-001000](#) [803-93-012-10-001000](#) [8-1437020-4](#) [819-22-004-30-001101](#) [820-22-006-30-001101](#)  
[820-22-008-30-001101](#) [821-22-002-10-001101](#)